

GOVERNMENT CORNER RESTORATION FORM

Date: 11-3-1999 By: JC

This survey consists of:

Township 26S Range 4W Sec. 7 County DOUGLAS MS:

State OR Date 5-24-99 No. 162500.008 Narrative: Corner Rpt: 66/12-20

Corner Designation

W.C.

S 7 MC
S 18

DOUGLAS COUNTY SURVEYOR

Condition Report Only

Not Found

Renewed

Unrecorded

Surveyed In

Referenced Out

MONUMENT DETAIL

Previous Renewals 1958 DCSS PI # 162500

Monument(s) Found: (Condition and Source)

2 1/2" BRASS CAP ON A 1 1/2" O.D. IRON PIPE, PROTRUDING 16" ABOVE GROUND 1958

COUNTY SURVEYORS OFFICE
WIT. COR.
14 FT. WEST

S 7
S 18

T26S R4W
1958

Accessories Found:

NO OBJ'S FOUND

15" NOWZI" DIA. W. OAK WITH A FULLY HEALED DOUBLE BLAZE, BEARS S 25 1/2° E, 32.5 FT (AGREES WITH REC.) 1958

15" NOW 17" DIA W. OAK WITH A FULLY HEALED DOUBLE BLAZE, BEARS N 130° W, 42.4 FT (AGREES WITH REC.) 1958

RENEWAL

Monument Set (Procedure and Description)

NONE

Monument Detail

N/A

New Accessories

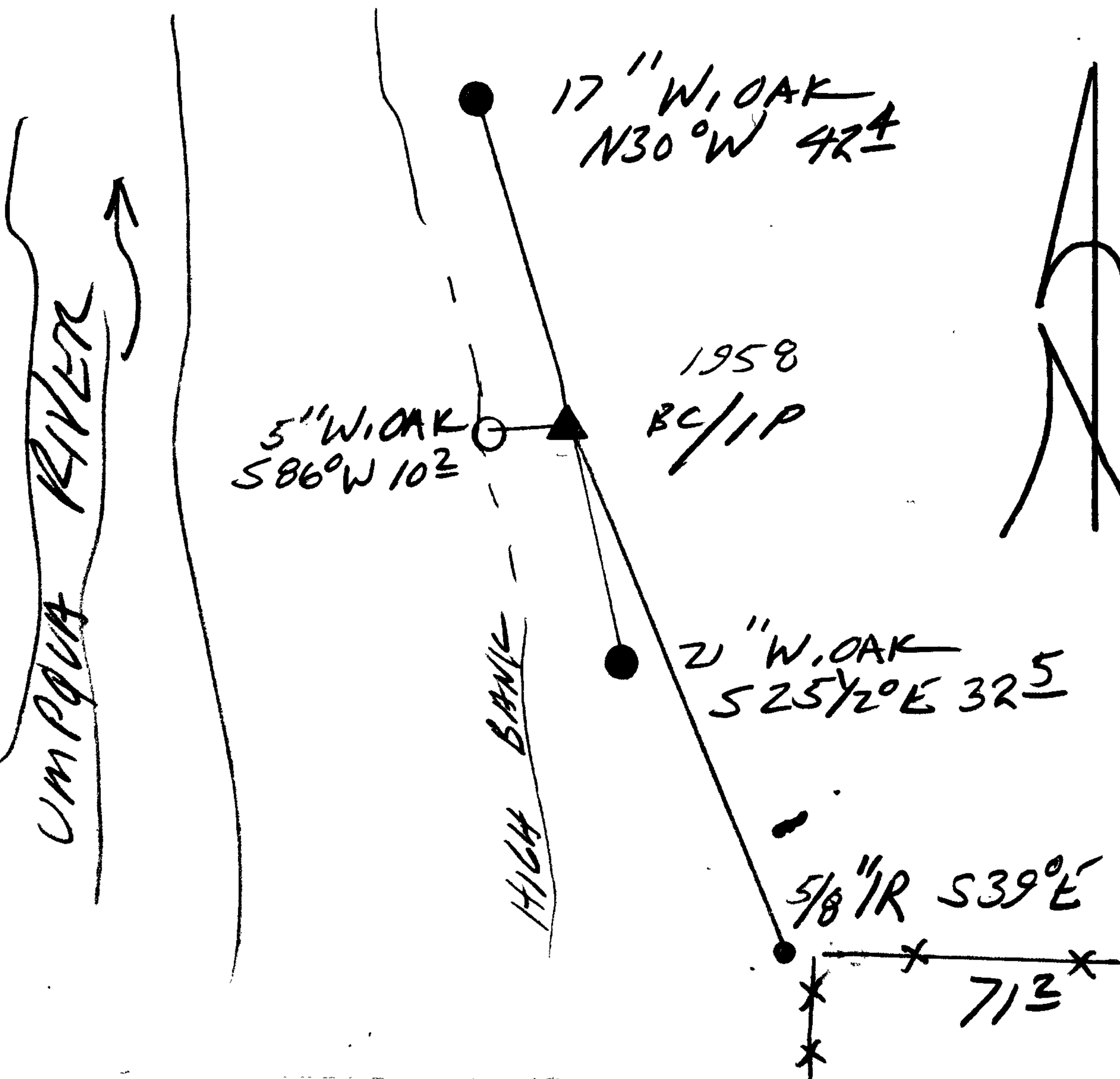
5" DIA. W. OAK DOUBLE BLAZE AND SCRIBED "X CS BT"
BEARS S86°W, 10.2 FT

5/8" I.R. AT FENCE CORNER, PROTRUDES 2" ABOVE GROUND,
BEARS S39°E, 71.2 FT

Sketch of Monument, Accessories, and General Area

Location & Comments

CORNER LIES NEAR
EDGE OF BLUFF



Comp. Declin. 17 3/4° E
 Agency DESO
 Party Chief RANDALL W. SMITH
 Notekeeper [Signature]
 Witnesses STEPHEN J. FLAISE

Address

Surveyor's Seal

REGISTERED
 PROFESSIONAL
 LAND SURVEYOR

[Signature]
 6-30-2000

OREGON
 JULY 25, 1980
 RANDALL W. SMITH
 2400