

GOVERNMENT CORNER RESTORATION FORM

Date: 10/15/1999 By: XC

Township 32S Range 5W Sec. 30

County DOUGLAS

This survey consists of:

State OR

Date 8-26-99

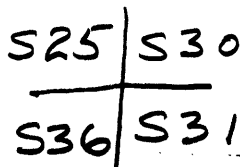
No. 100200.024

Map: _____

Narrative: _____

Corner Rpt: 66/12-16

Corner Designation



DOUGLAS COUNTY

Condition Surveyed

Not Found

Renewed

Unrecorded

Surveyed In

Referenced Out

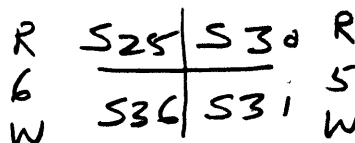
MONUMENT DETAIL

Previous Renewals 1900, 1949, 1958 + 1967

Monument(s) Found: (Condition and Source)

2 1/2" DIA BRASS CAP ON A 1/2" O.D. IRON PIPE, PROTRUDES 2" ABOVE GROUND. 1958

COUNTY SURVEYORS OFFICE



T32S

1958

Accessories Found:

25" NOW 28" DIA DOWN CEDAR WITH AN UNHEALED BLAZE, SCRIBING VISIBLE "T32S R6W S25 CS BT", BEARS N140W, 69.5 FT (AGREES WITH REC.) 1958

10" NOW 16" DIA 2 1/2 FT HIGH CEDAR STUMP WITH A FULLY HEALED DOUBLE BLAZE, BEARS S340W, 72.1 FT (AGREES WITH REC.) 1958

8" NOW 24" DIA D. FIR WITH A FULLY HEALED BLAZE, BEARS N690E, 80.1 FT (AGREES WITH REC.) 1958

18" NOW 25" DIA D. FIR WITH A FULLY HEALED BLAZE, BEARS S870E, 72.5 FT (AGREES WITH REC.) 1967

RENEWAL

Monument Set (Procedure and Description)

NONE

Monument Detail

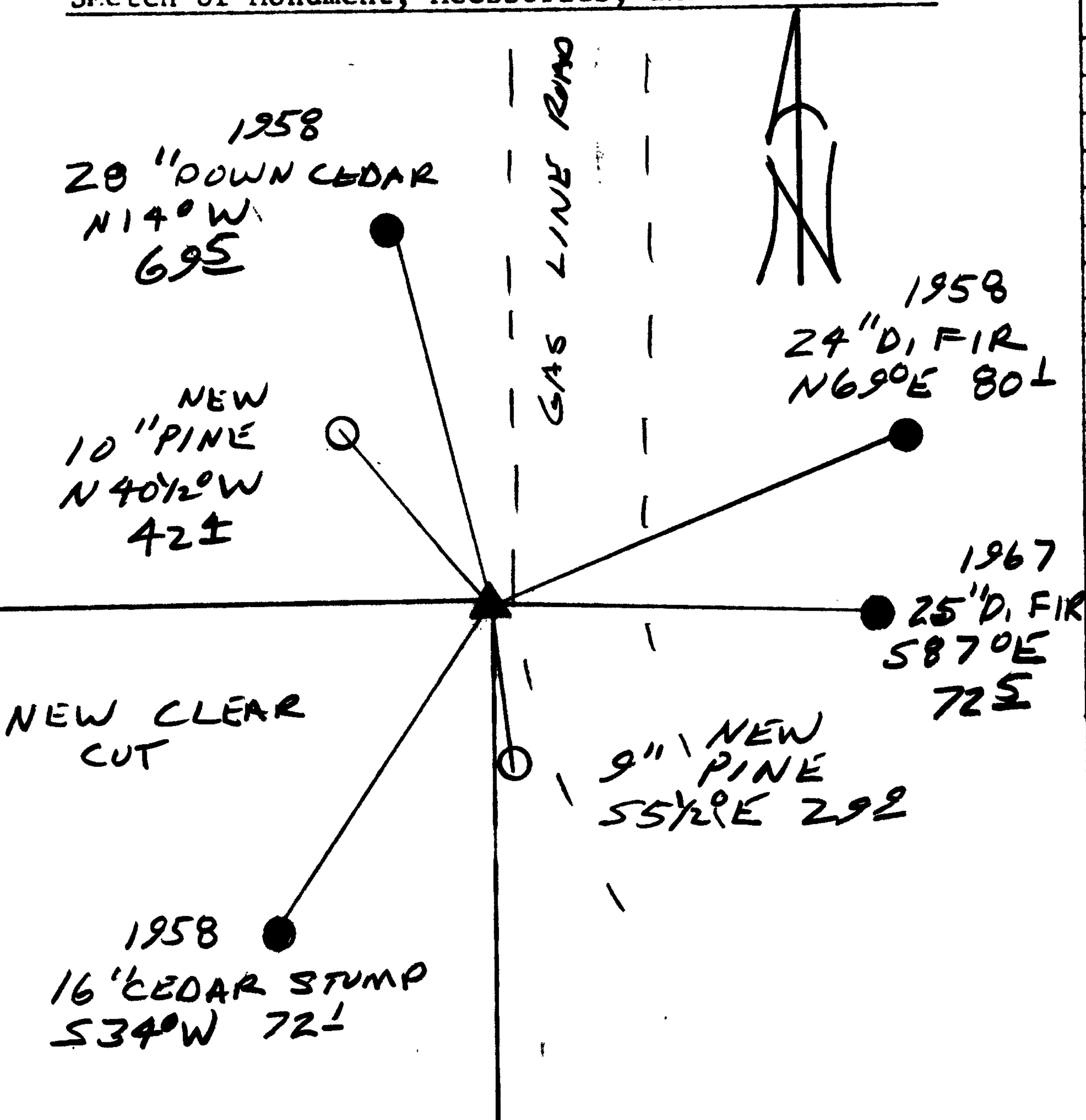
N/A

New Accessories

10" PINE DOUBLE BLAZED AND SCRIBED "T32S R6W S25 CS BT" BEARS N 40 1/2° W, 42.4 FT

9" PINE DOUBLE BLAZED AND SCRIBED "T32S R5W S31 CS BT" BEARS S 5 1/2° E, 29.9 FT

Sketch of Monument, Accessories, and General Area



Location & Comments

CORNER LIES ALONG THE WESTERN EDGE OF GAS LINE ROAD.

NEW CLEAR CUT IN SW QUAD.

Comp. Declin. 17 3/4° E

Agency DCSO

Party Chief RANDALL W. SMITH

Notekeeper [Signature]

Witnesses STEPHEN F. LAISE

Address

REGISTERED PROFESSIONAL LAND SURVEYOR

[Signature] EXPIRES 6-30-2000

OREGON JULY 26, 1990 RANDALL W. SMITH 2469