

GOVERNMENT CORNER RESTORATION FORM

Date: 7-13-1999 By: JC

This survey consists of:

Township 23S Range 9W Sec. 2

County DOUGLAS Map: \_\_\_\_\_

State OR Date 7-12-99

No. 500640.078 Narrative: \_\_\_\_\_

Corner Rpt: 66/12-1

Corner Designation

1/4 S3 | S2

DOUGLAS COUNTY

Condition Report Only

Not Found

Renewed

Unrecorded

Surveyed In

Referenced Out

Previous Renewals M82-57 AMENDED M85-31 1980

MONUMENT DETAIL

Monument(s) Found: (Condition and Source)

2 1/2" DIA BRASS CAP ON A 1/2" O.D. IRON PIPE, PROTRUDING 4" ABOVE GROUND, M85-31

AND 1982 BLM

T23S R9W

1/4

S3 | S2

1980

Accessories Found:

36" NOW 36" DIA 3 FT HIGH D. FIR STUMP WITH BT TAG AND AXE MARKS BEARS N34°E, 22.4 FT (AGREES WITH 1982 BLM) M82-57

42" NOW 42" DIA 5' FT HIGH D. FIR STUMP WITH BT TAG AND A PARTIALLY HEALED SINGLE BLAZE, SCRIBING VISIBLE "Y452 B" BEARS S79°E, 29.0 FT (AGREES WITH 1982 BLM) M82-57

30" NOW 30" DIA 6 FT HIGH D. FIR STUMP WITH BT TAG AND A PARTIALLY HEALED SINGLE BLAZE, SCRIBING VISIBLE "4S3 BT" BEARS N57°W, 48.9 FT. (AGREES WITH 1982 BLM) 1982 BLM

RENEWAL

Monument Set (Procedure and Description)

Monument Detail

NONE

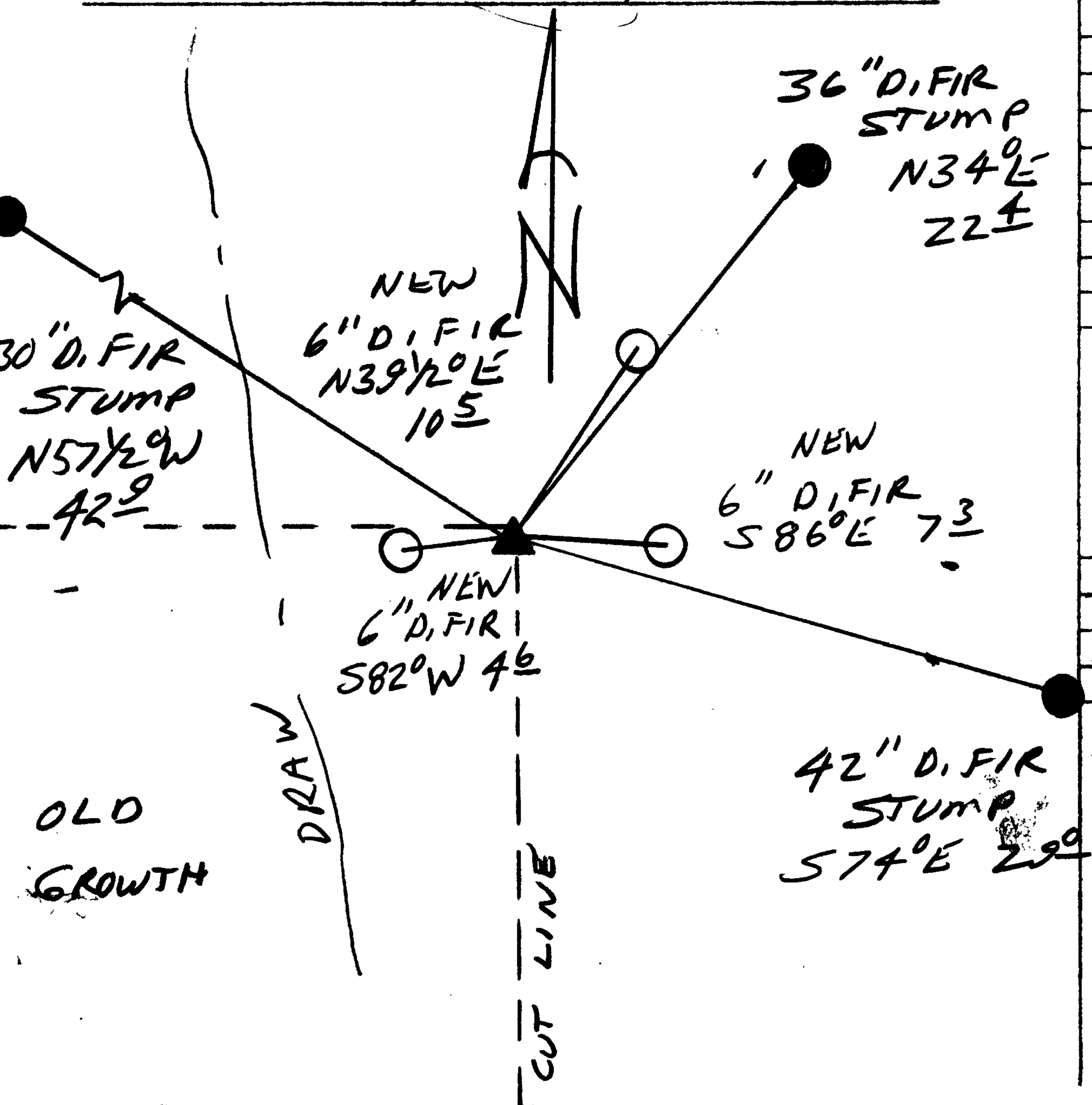
N/A

New Accessories

- 6" DIA. D. FIR DOUBLE BLAZED AND SCRIBED "1/4 S 3 CS BT" BEARS S 82° W, 9.6 FT
- 6" DIA. D. FIR DOUBLE BLAZED AND SCRIBED "1/4 S 2 CS BT" BEARS N 39 1/2° E, 10.5 FT
- 6" DIA. D. FIR DOUBLE BLAZED AND SCRIBED "1/4 S 2 CS BT" BEARS S 86° E 7.3 FT

Sketch of Monument, Accessories, and General Area

Location & Comments



CORNER LINES APPROX. 20 FT EAST OF A N-S DRAW

Comp. Declin. 17 1/4° E  
 Agency DCSG  
 Party Chief RANDALL W SMITH  
 Notekeeper [Signature]  
 Witnesses STEPHEN J FLAISE

Address

Surveyor's Seal

REGISTERED PROFESSIONAL LAND SURVEYOR

Randall W Smith  
 27 APR 15 6-30-2000

OREGON  
 JULY 22, 1989  
 RANDALL W. SMITH  
 2400