

GOVERNMENT CORNER RESTORATION FORM

Date: 6-23-1999 By: JL

This survey consists of: _____

Township 26S Range 4W Sec. 7

County DOUGLAS

State OR

Date 1-27-99

No. 044010.006

Map: _____

Narrative: _____

Corner Rpt: 66/8-41

Corner Designation

NE COR
DLC 44

DOUGLAS COUNTY SURVEYOR

- Condition Report Only
- Not Found
- Renewed
- Unrecorded
- Surveyed In
- Referenced Out

MONUMENT DETAIL

Previous Renewals 1929 DCSO

Monument(s) Found: (Condition and Source)

NO CORNER TREE OR STONE OF RECORD FOUND.

AT POSITION OF CORNER DETERMINED FROM 1929 BT A 9" DIA. W. OAK WITH YELLOW BLK LOCATION TAG. "GORDON 10/29" INDICATES TREE IS CORNER. A SCAR ON TRUNK SHOWS A PREVIOUS SEARCH, WE REOPEN NOTHING FOUND.

NOTE: ORIG CORNER TREE WAS A 10" DIA. B. OAK

N/A

Accessories Found:

8" NOW 16" DIA W. OAK SHOWING A HEALED SCAR AND AXE MARKS OF A PREVIOUS SEARCH, WE REOPEN AND FIND GOOD SCRIBE MARK "S" BEARS S16°W 47.5 FT. 1922

ORIG. BT NOT FOUND

RENEWAL

Monument Set (Procedure and Description)

9" DIA. W. OAK IS SINGLE
BLAZED AND SCRIBED
"NE COR. DLC 44 CS" ON
SOUTHWESTERLY TRUNK

Monument Detail

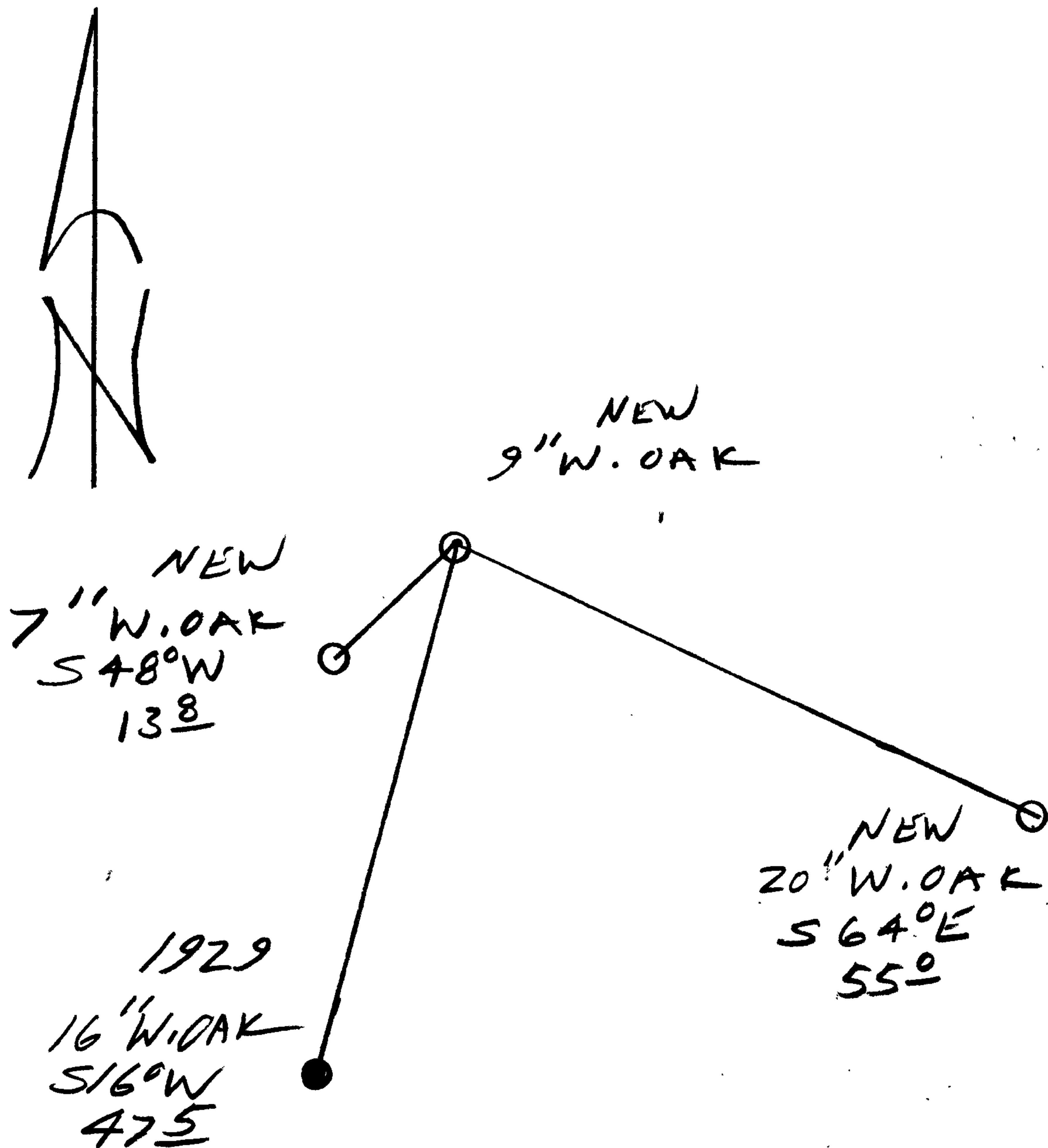
N/A

New Accessories

20" DIA. W. OAK DOUBLE BLAZE AND SCRIBED "NE DLC 44 CS BT,"
BEARS S64°E, 55.0 FT.

7" DIA. W. OAK DOUBLE BLAZED AND SCRIBED "NE DLC 44 CS BT"
BEARS S48°W, 13.8 FT

Sketch of Monument, Accessories, and General Area



Location & Comments

CORNER LIES IN WHISTLER
BEND PARK PICKNIC
AREA.

Comp. Declin. 17 3/4° E
Agency DCSB
Party Chief RANDALL W. SMITH
Notekeeper
Witnesses STEPHEN T. LAUSE

Address

Surveyor's Seal

REGISTERED
PROFESSIONAL
LAND SURVEYOR

Randall W. Smith
EXPIRES 6-20-2000

OREGON
JULY 25, 1990
RANDALL W. SMITH
2488