

GOVERNMENT CORNER RESTORATION FORM

Date: 5-24-1999 By: JC

This survey consists of:

Township 29 S Range 07 W Sec. 13 County DOUGLAS Map: _____

State OREGON Date APRIL 19, 1999 No. 66440.02 Narrative: _____

Corner Rpt: 66/8-37

Corner Designation

1/4
S14 | S13

DOUGLAS COUNTY
SURVEYOR

- Condition Report Only
- Not Found
- Renewed
- Unrecorded
- Surveyed In
- Referenced Out

Previous Renewals 1957 BLM RESURVEY, 1959 BLM RESURVEY

MONUMENT DETAIL

Monument(s) Found: (Condition and Source)

FROM THE 1959 BLM RESURVEY A
2 1/2 INCH DIAMETER BRASS CAP (MARKED
AS AT RIGHT) ON A 1 INCH O.D. IRON PIPE FIRMLY
SET AND PROTRUDING APPROXIMATELY 19 INCHES
ABOVE GROUND (THIS MONUMENT WAS MOVED FROM
THE POSITION ESTABLISHED IN THE 1957 BLM
RESURVEY).

U.S. GENERAL LAND OFFICE SURVEY
T295 RTW
1/4
S14 | S13
1957

Accessories Found:

NO EVIDENCE OF ORIGINAL BEARING TREES IS FOUND.

BEARING TREES FOR 1957 BLM RESURVEY WERE NOTED AS
DESTROYED IN THE 1959 BLM RESURVEY; POSSIBLE EVIDENCE
OF THE SOUTHEAST BT. WITH A PREVIOUSLY CHOPPED-OUT BLAZE, IS NOTED
NORTH FROM THE 1959 SOUTHEAST BT.

FROM THE 1959 BLM RESURVEY TWO BEARING TREES ARE FOUND.
A FIR 6" DIAM. NOW A 10 INCH D.B.H. DOUGLAS FIR WITH A FULLY HEALED
SINGLE BLAZE, BEARS S47°E, 40[±] FEET DISTANT (AS PER RECORD).
A FIR 8" DIAM. NOW A 29 INCH D.B.H. DOUGLAS FIR WITH A FULLY HEALED
SINGLE BLAZE, BEARS N71°W, 64[±] FEET DISTANT (AS PER RECORD).

RENEWAL

Monument Set (Procedure and Description)

Monument Detail

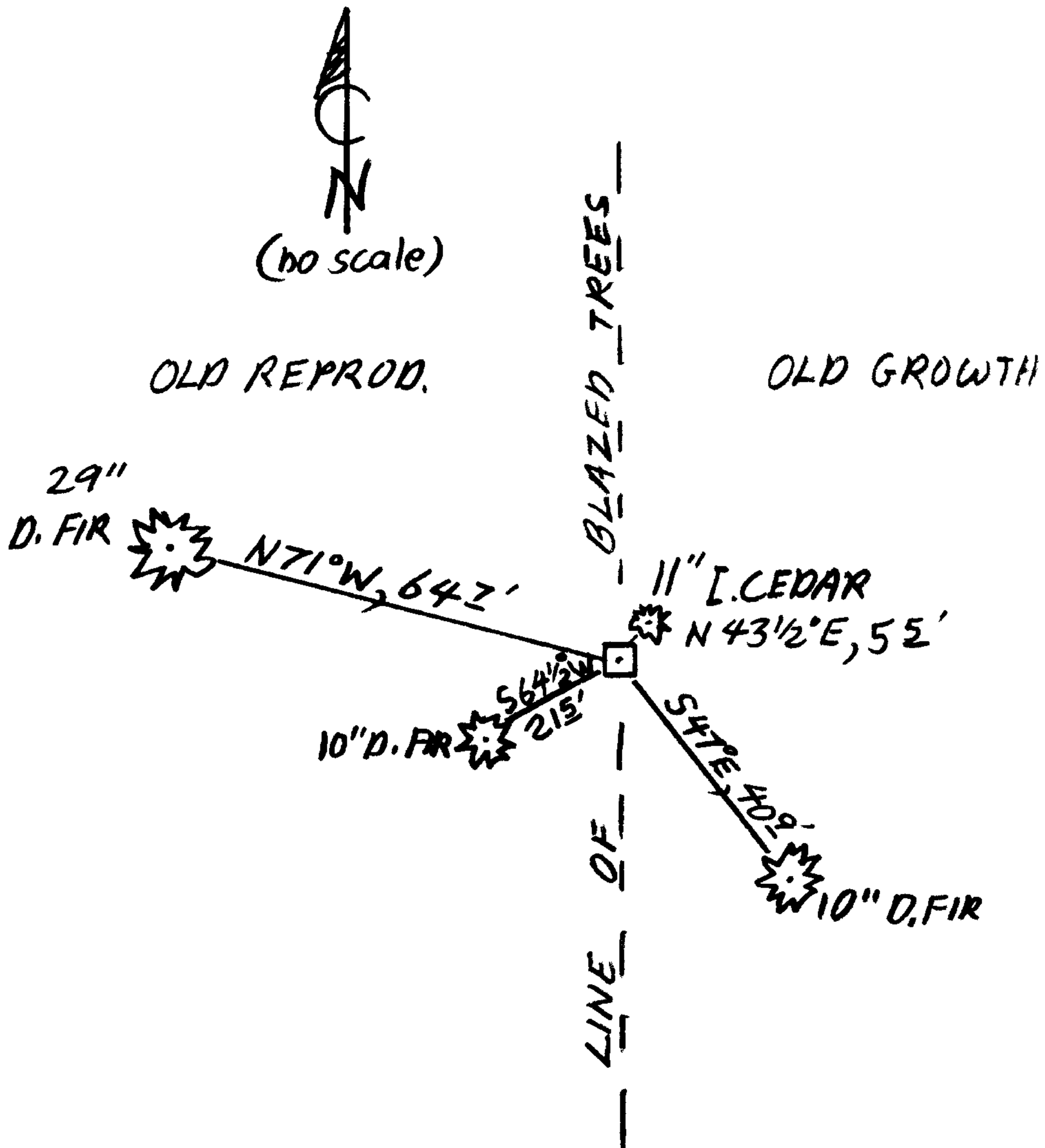
N/A

N/A

New Accessories

AN 11 INCH D.B.H. INCENSE CEDAR SCRIBED "1/4 S13 CS BT" ON A DOUBLE BLAZE, BEARS N 43 1/2° E, 5 1/2 FEET DISTANT.
A 10 INCH D.B.H. DOUGLAS FIR SCRIBED "1/4 S14 CS BT" ON A DOUBLE BLAZE, BEARS S 64 1/2° W, 2 1/2 FEET DISTANT.

Sketch of Monument, Accessories, and General Area



Location & Comments

MONUMENT IS ON VERY GENTLE SOUTH SLOPE, ON A BLAZED NORTH-SOUTH LINE FORMING BOUNDARY BETWEEN OLD AND YOUNGER FOREST (SEE SKETCH).

Comp. Declin. 17 3/4° E
Agency DCSD
Party Chief STEPHEN JOHN FLAUSE
Notekeeper Stephen John Flause
Witnesses JOHN A. PIKE

Address

Surveyor's Seal

REGISTERED PROFESSIONAL LAND SURVEYOR

Expires 6-30-2000

OREGON
JULY 25, 1980
RANDALL W. SMITH
2483