

GOVERNMENT CORNER RESTORATION FORM

Date: 5/24/1999 By: SC

Township 255 Range SW Sec. 6

County DOUGLAS This survey consists of:

State OR Date 3-30-99

No. 100600.005

Corner Designation

Corner Rpt: 66/8-34

S1 | S6
-----
S12 | S7

- Condition Report Only
Not Found
Renewed
Unrecorded
Surveyed In
Referenced Out

Previous Renewals 1972 DCSO

Monument(s) Found: (Condition and Source)

2 1/2" BRASS CAP ON A 1 1/2" O.D.
IRON PIPE PROTRUDES 9"
ABOVE GROUND. 1972

COUNTY SURVEYORS OFFICE
T255
R 6 W
S1 | S6
S12 | S7
1972
R S W

Accessories Found:

1366 1/2 DIST TAKEN FROM NEW CORNER POSITION
15" NOW 35" DIA. D. FIR WITH A FULLY HEALED
BLAZE, BEARS N 25° E 336.3 FT (1972
NORTHWEST BT) NOTE DISTANCE TO THIS
BT FROM 1972 BC/IP IS 330.7 FT NOT 300.7 AS PER REC.)

16" NOW 22" DIA W. DIA. WITH A FULLY HEALED
BLAZE, BEARS N 85° E, 179.2 FT (1972
EASTERLY BT)

RENEWAL

Monument Set (Procedure and Description)

1972 BRASS CAP SAWN OFF  
 AND A DCSO YELLOW PLASTIC  
 CAP IS SET IN ITS CENTER,  
 NOW PROTRUDES 7" ABOVE GROUND

---

2 3/8" DIA. BRASS CAP ON A 1 3/8" O.D.  
 BY 32" LONG IRON PIPE IS  
 SET AT NEW PROPORTIONED  
 CORNER POSITION, PROTRUDES  
 6" ABOVE GROUND.

Monument Detail

DOUGLAS COUNTY SURVEYORS  
T255

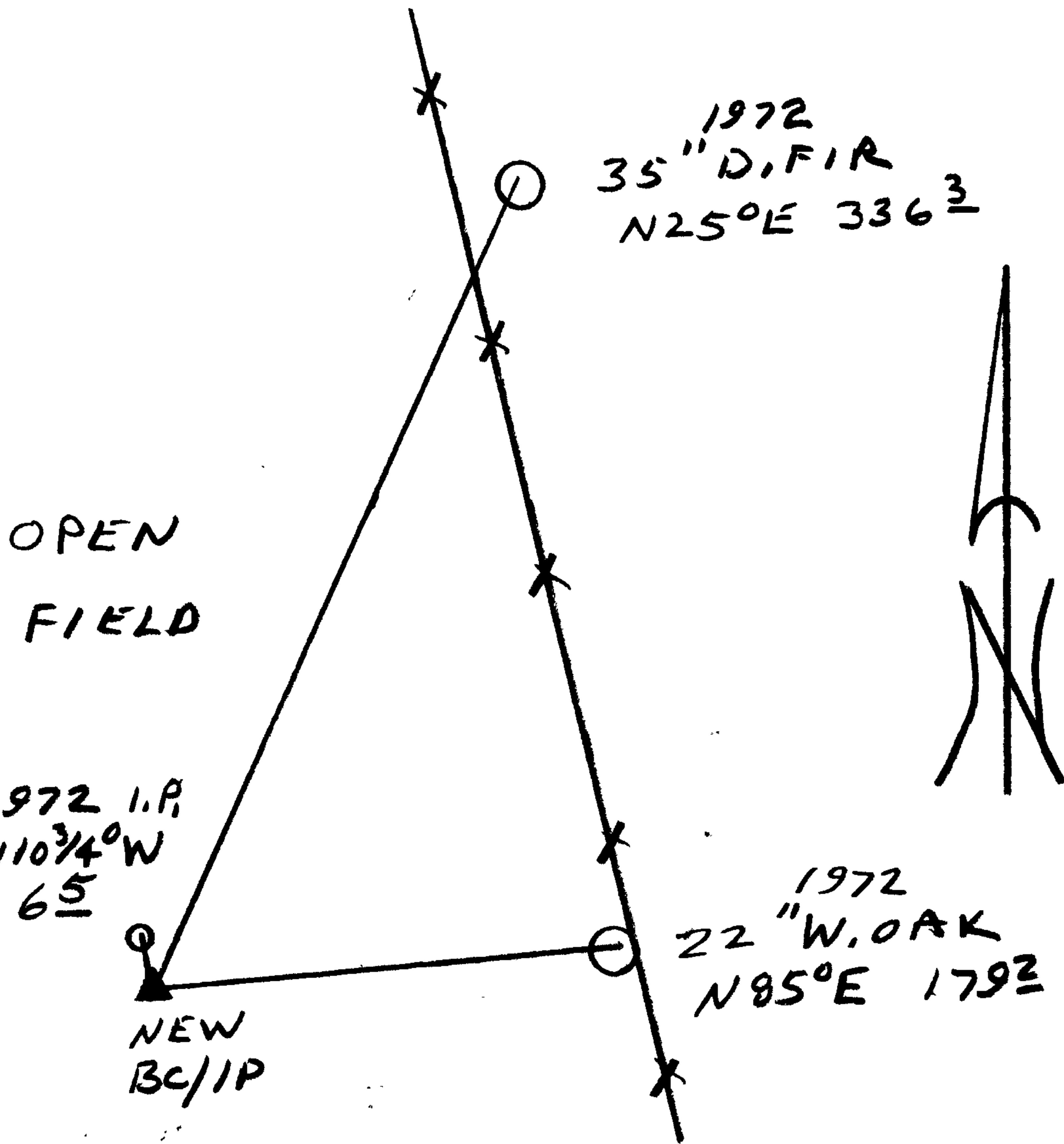
R	S1	S6	R
G			5
W	S12	S7	W

1998  
OFFICE

New Accessories

1/2" O.D. IRON PIPE BEARS N10 3/4° W, 6.5 FT

Sketch of Monument, Accessories, and General Area



Location & Comments

Comp. Declin. 12 3/4° E  
 Agency DCSO  
 Party Chief RANDALL W SMITH  
 Notekeeper [Signature]  
 Witnesses STEPHEN T FIAUSE

Address

Surveyor's Seal

REGISTERED  
 PROFESSIONAL  
 LAND SURVEYOR

Randall W Smith  
EXPIRES 6-30-2000

OREGON  
 JULY 25, 1900  
 RANDALL W. SMITH  
 1998