

GOVERNMENT CORNER RESTORATION FORM

Township 25S Range 5W Sec. 19

County DOUGLAS

Date: 5-24-1999 By: JC

This survey consists of:

State OR

Date 3-29-99

No. 100340.005

Map: _____

Narrative: _____

Corner Designation

Corner Plot: 66/8-31

1/4 S24 | S19

DOUGLAS COUNTY
SURVEYOR

- Condition Report Only
- Not Found
- Renewed
- Unrecorded
- Surveyed In
- Referenced Out

Previous Renewals 1972 + 1997 OCSU, 1999 PLS 1941

MONUMENT DETAIL

Monument(s) Found: (Condition and Source)

2" ALUM. CAP ON A 5/8" IRON
ROD PROTRUDES 1" ABOVE
GROUND 1999

2 3/8" DCSU BRASS CAP ON A 1 3/8"
O.D. IRON PIPE PROTRUDES 0"
ABOVE GROUND 1997
BEARS N 15° W 35.06 FT
FROM ALUM CAP / I.R.

T25S
R6W R5W
1/4
S24 | S19
1999
PLS 1941

Accessories Found:

BLG + DIST TAKEN FROM 1999 ALUM CAP / I.R.

1 1/4" NOW 2 1/2" DIA D. FIR WITH A FULLY HEALED SINGLE
BLAZE, BEARS N 25 1/4° E, 59.1 FT (NOTE BLAZE
FACES / S 65° W) 1972

6" NOW 2 1/2" DIA. D. FIR WITH A FULLY HEALED SINGLE
BLAZE, BEARS N 87 1/2° W, 12.6 FT (NOTE BLAZE
FACES NORTH) 1972

7" NOW 7" DIA ASM WITH AN UNHEALED DOUBLE BLAZE,
SCRIBING VISIBLE "1/4 S24 CS BT", BEARS N 14 1/2° W,
44.6 FT 1997

7" NOW 7" DIA ASM WITH AN UNHEALED DOUBLE
BLAZE, SCRIBING VISIBLE "1/4 S24 CS BT" BEARS
N 31 1/2° W, 42.1 FT (NOTE BLAZE FACES WESTWARD)
1997

RENEWAL

Monument Set (Procedure and Description)

1997 DCSO BRASS CAP IS SAWN
OFF IRON PIPE AND A YELLOW
PLASTIC CAP SET IN CENTER.
IRON PIPE PROTRUDES 6" ABOVE
GROUND

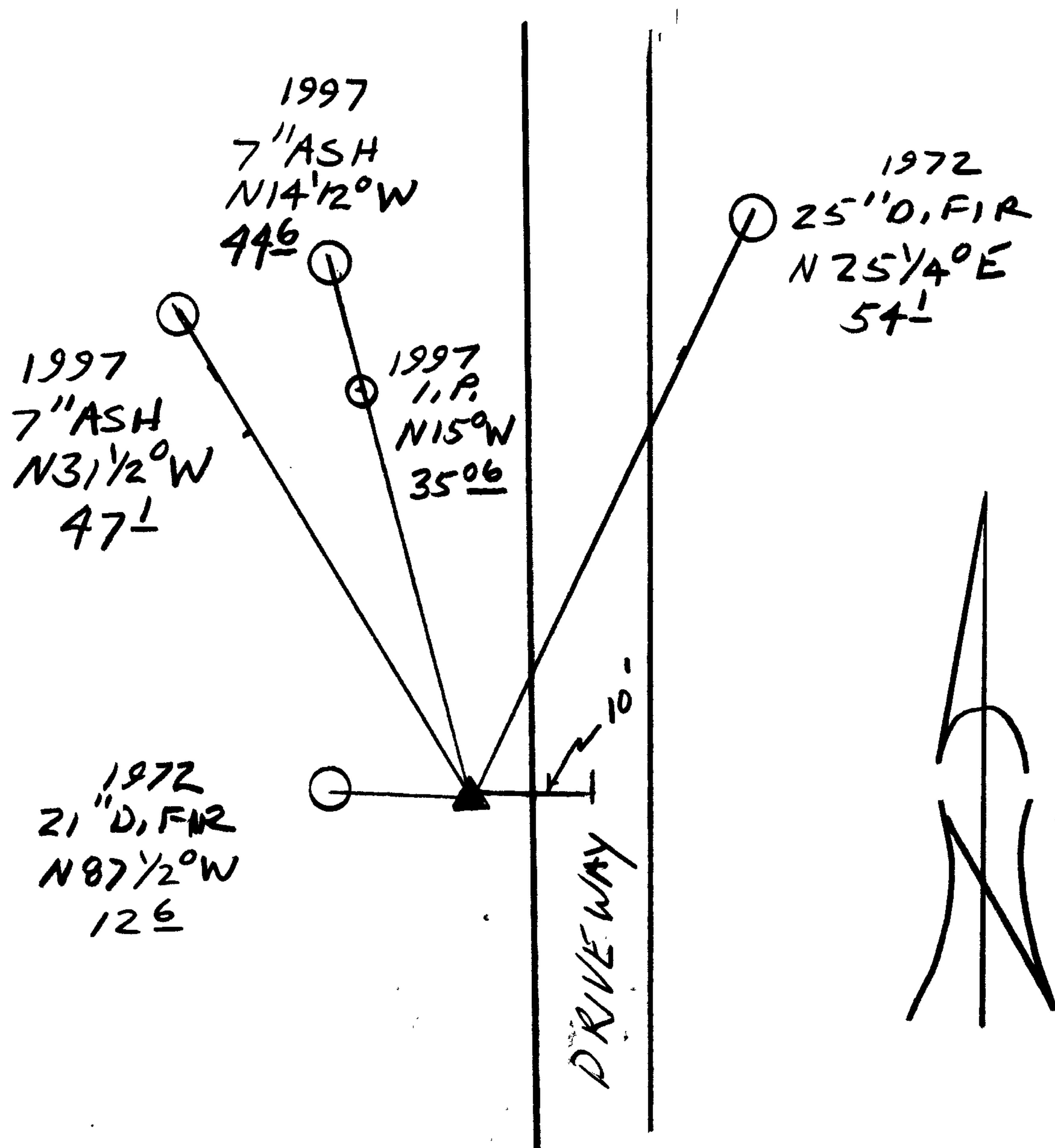
Monument Detail

N/A

New Accessories

NONE

Sketch of Monument, Accessories, and General Area



Location & Comments

CORNER LIES 10 FT WEST
OF ~~S~~ OF DRIVEWAY

NOTE THIS RENEWAL
REFLECTS RECENT SURVEY
BY PLS 1941 THAT
DETERMINED CORNER POSITION
BASED ON OLD SUBDIVISION
TIES

Comp. Declin. 12 3/4° E
Agency DCSO
Party Chief RANDALL W. SMITH
Notekeeper [Signature]
Witnesses STEPHEN J. FLAUSC

Address

Surveyor's Seal

REGISTERED
PROFESSIONAL
LAND SURVEYOR

[Signature]
PLS 6-30-2000

OREGON
JULY 25, 1990
RANDALL W. SMITH
2489