



RENEWAL

Monument Set (Procedure and Description)

Monument Detail

NONE

N/A

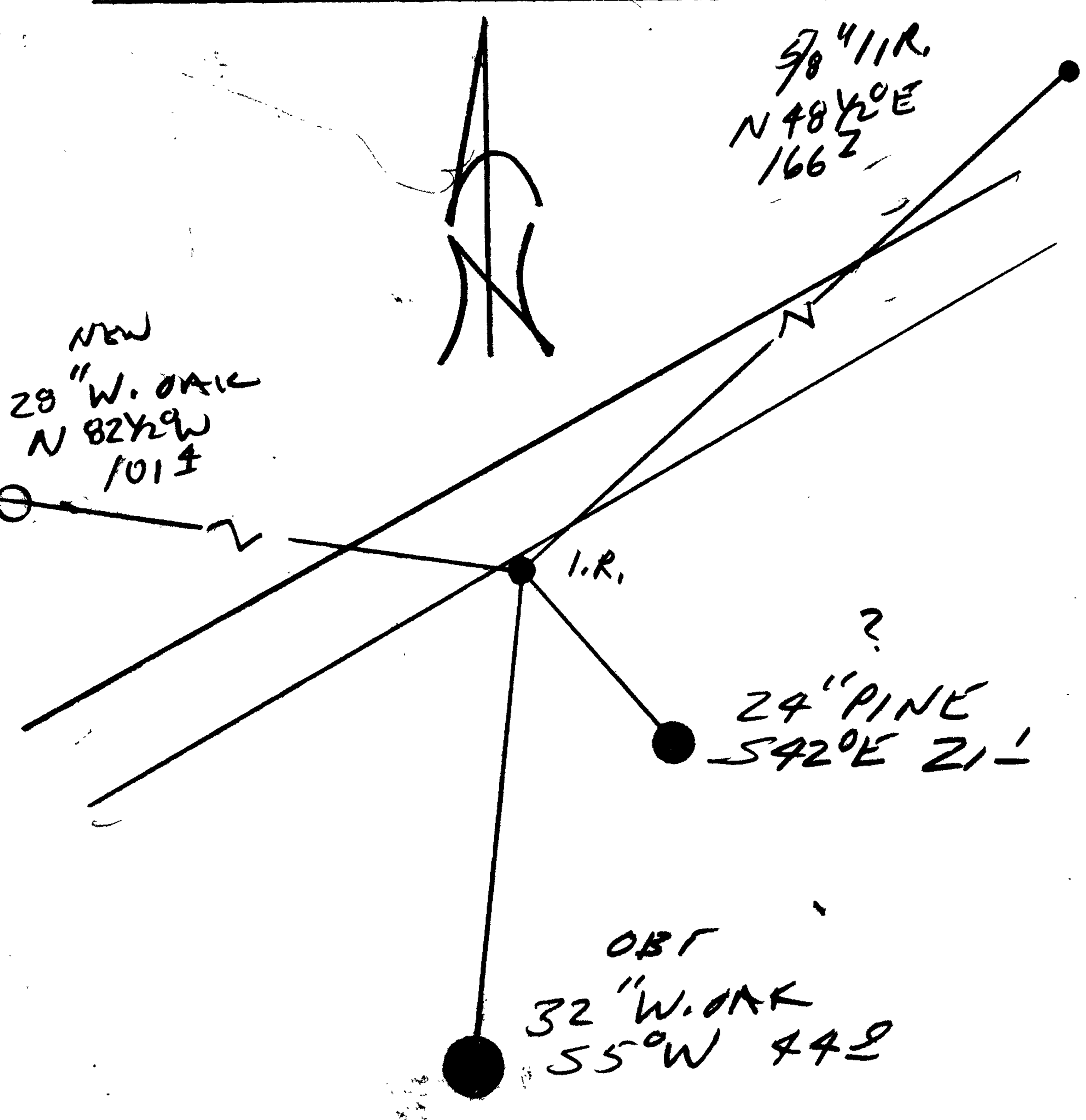
New Accessories

28" W. OAK DOUBLE BLAZED AND SCRIBED "INT SE DLR 48 CS BT"  
BEARS N 82 1/2° W, 101.4

5/8" IRON ROD PROTRUDES 3" ABOVE GROUND, BEARS  
N 48 1/2° E, 166.8 FT.

Sketch of Monument, Accessories, and General Area

Location & Comments



CORNER LIES 4 FT SOUTHERLY OF EDGE OF PAVEMENT

Comp. Declin. 17 3/4° E  
Agency DISD  
Party Chief RANDALL W. SMITH  
Notekeeper  
Witnesses STEPHEN T. FRAUSE

Address

Surveyor's Seal

REGISTERED PROFESSIONAL LAND SURVEYOR

*Randall W. Smith*  
EXPIRES 6-30-2001

OREGON  
JULY 25, 1990  
RANDALL W. SMITH  
2489