



RENEWAL

Monument Detail

Monument Set (Procedure and Description)

A 3" DIA. BRASS DRILL CAP IS SET FLUSH IN CONCRETE DRIVEWAY

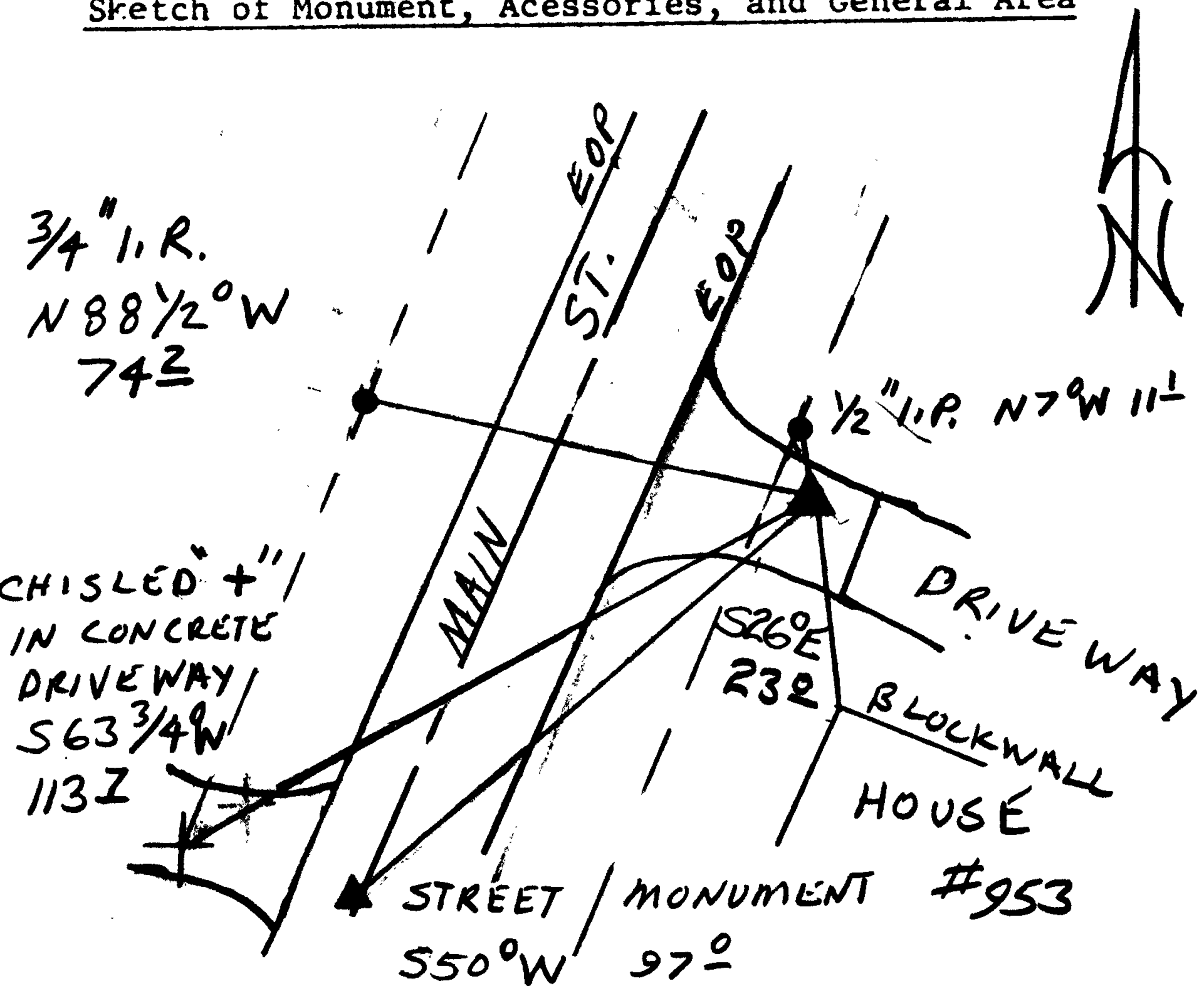
DOUGLAS COUNTY SURVEYORS

T27S  
DLC R  
39 | 5  
W  
1999  
OFFICE

New Accessories

NORTH WEST CORNER OF HOUSE AT 953 MAIN ST. BEARS S26°E, 23.0 FT (BLOCK CORNER OF WALL)

Sketch of Monument, Accessories, and General Area



Location & Comments

Comp. Declin. 17 3/4° E  
Agency DCSO  
Party Chief RANDALL W. SMITH  
Notekeeper  
Witnesses STEPHEN J. FLAUS

Address

Surveyor's Seal

REGISTERED PROFESSIONAL LAND SURVEYOR  
RANDALL W. SMITH  
EXPIRES 6-30-2001  
OREGON JULY 25, 1990  
RANDALL W. SMITH  
2489