

GOVERNMENT CORNER RESTORATION FORM

12/31/1998 By: JC

This survey consists of:

Township 29S Range 7W Sec. 29 County DOUGLAS

State OREGON Date 01/06/98 No. \_\_\_\_\_

Corner Rpt: 66/4-11

Corner Designation

SW  
DLC 38

RENEWED POSITION OF CORNER  
DETERMINED IN 1937 RENEWAL

DOUGLAS COUNTY  
SURVEYOR

- Condition Report Only
- Not Found
- Renewed
- Unrecorded
- Surveyed In
- Referenced Out

Previous Renewals 1937 AND 1954

Monument(s) Found: (Condition and Source)

N/A

A 1 INCH O.D. IRON PIPE SET FLUSH  
WITH GROUND IN AN EAST-WEST  
FENCELINE. MONUMENT AS DESCRIBED  
IN 1937 RENEWAL.

Accessories Found:

ONE ORIGINAL BEARING TREE FOUND. AN 18" DIA. YELLOW PINE  
NOW A PARTIALLY ROTTEN 5 FOOT TALL, 2.6 INCH D.B.H. PINE STUMP  
WITH SCRIBING "38" VISIBLE IN A PREVIOUSLY OPENED BLAZE  
BEARS N 60° E, 265 ± FEET DISTANT (RECORD N 60° E, 259 ± FEET).

NO EVIDENCE OF 1937 RENEWAL BEARING TREE FOUND.

FROM 1954 RENEWAL ONE BEARING TREE FOUND. A 16" W  
OAK NOW A 31 INCH D.B.H. WHITE OAK WITH A FULLY HEALED  
BLAZE BEARS N 73° W, 18 ± FEET DISTANT (AS PER RECORD) (THIS  
TREE HAS NORTH-SOUTH FENCELINE EMBEDDED ON EAST EDGE OF  
TRUNK). OTHER 1954 NW BEARING TREE NOT FOUND.

C.S. File No. 66/4-11

RENEWAL

Monument Set (Procedure and Description)

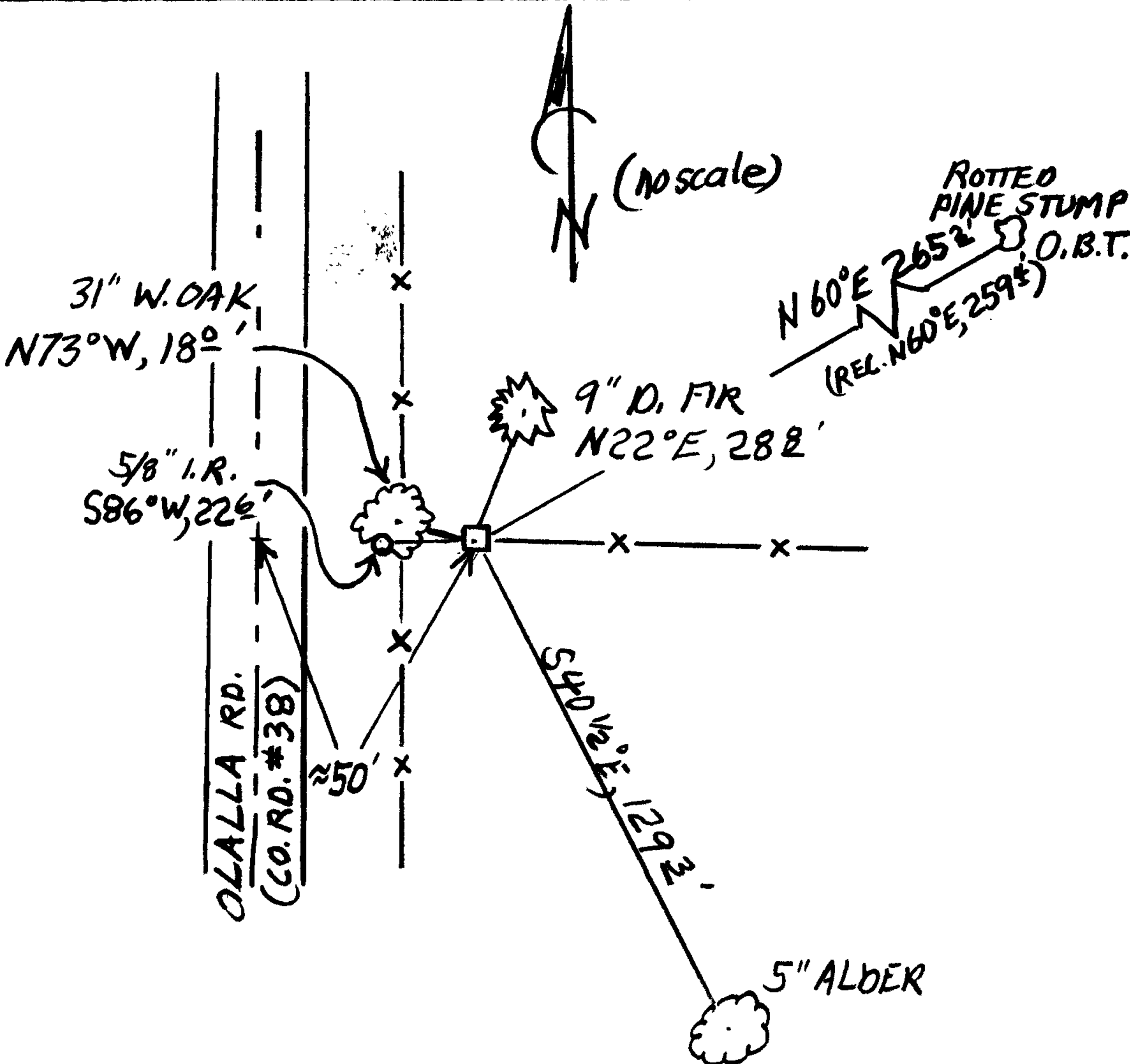
Monument Detail

FOUND MONUMENT IS FIRMLY SET IN FENCE LINE WHICH HAS BURIED STRANDS OF WIRE; NOT PRACTICABLE TO SET BRASS CAP MONUMENT.

New Accessories

- A 9 INCH D.B.H DOUGLAS FIR SCRIBED "SW DLC 38 CS BT" ON A DOUBLE BLAZE BEARS N22°E, 28 8 FEET DISTANT.
A 5 INCH D.B.H. RED ALDER SCRIBED "SW DLC 38 CS BT" ON A DOUBLE BLAZE BEARS S40 1/2 °E 129 3 FEET DISTANT.
A 5/8 INCH DIAMETER IRON ROD COUNTY ROAD R/W PIN BEARS S86°W, 22 6 FEET DISTANT.

Sketch of Monument, Accessories, and General Area



Location & Comments

MONUMENT LIES APPROXIMATELY 675 FEET NORTH FROM THE BYRON CREEK ESTATES SUBDIVISION ENTRANCE AND APPROXIMATELY 50 FEET EAST FROM THE CENTERLINE OF OLALLA ROAD (CO. RD. # 38). MONUMENT IS IN AN EAST WEST FENCE LINE AND APPROX. 16 FEET EAST FROM A NORTH-SOUTH FENCE LINE

Comp. Declin. EAST 17 3/4 °
Agency DGSO
Party Chief R.W. SMITH
Notekeeper Stephen John Flause
Witnesses S.J. FLAUSE, JOHN PIKE

Address

Surveyor's Seal

REGISTERED PROFESSIONAL LAND SURVEYOR

Signature of Randall W. Smith dated 6-30-2007

OREGON JULY 25, 1980 RANDALL W. SMITH 2469