

FILED

GOVERNMENT CORNER RESTORATION FORM

Date: 11-5-98 By: X

This survey consists of: \_\_\_\_\_

Township T30S Range 4W Sec. 7

County DOUGLAS Map: \_\_\_\_\_

State OR Date 10-26-99

No. \_\_\_\_\_

Narrative: \_\_\_\_\_

Corner Rpt: 66/4-7

Corner Designation

1/4 S7/S8

DOUGLAS COUNTY SURVEYOR

Condition Report Only

Not Found

Renewed

Unrecorded

Surveyed In

Referenced Out

MONUMENT DETAIL

1954 MARKHAM  
Previous Renewals 1963 DC SO, 1994 BLM

P.I. # 200540

Monument(s) Found: (Condition and Source)

2 1/2" DIA BRASS CAP ON A

1 1/2" O.D. IRON PIPE

PROTRUDES 10" ABOVE GROUND  
(1963)

1/2" X 16" LONG IRON ROD IS FOUND  
OUT OF GROUND APPROX.  
12 FT WESTERLY AND DOWN  
HILL OF RECORD POSITION  
(SOUTH 65.4 FT) AS NOTED  
IN 1963 DC SO RENEWAL.  
SET IN ERROR IN 1954

COUNTY SURVEYORS OFFICE  
T30S

1/4 S7/S8 R  
4  
W  
1963

Accessories Found:

NO OBT'S FOUND

6" NOW 17" DIA 10" HIGH D.FIR SNAG,  
WITH A FULLY HEALED DOUBLE  
BLAZE BEARS S12°E 18.8 FT (AGREES WITH  
1963 DC SO REC.) 1963

12" NOW 14" DIA MOSTLY DEAD B. OAK WITH A FULLY  
HEALED DOUBLE BLAZE BEARS S33°40'W, 24.1 FT  
(AGREES WITH 1994 BLM REC.) 1963

38" NOW 39" DIA D.FIR WITH A FULLY HEALED  
SINGLE BLAZE BEARS S59°12'W, 40.3 FT  
(AGREES WITH 1994 REC.) 1994

33" NOW 25" DIA MOSTLY OAK D.FIR WITH A FULLY HEALED  
SINGLE BLAZE BEARS N75°12'E, 37.6 FT  
(AGREES WITH REC.) 1994

200540.034 CV

C.S. File No. 66/4-7

RENEWAL

Monument Set (Procedure and Description)

NONE

Monument Detail

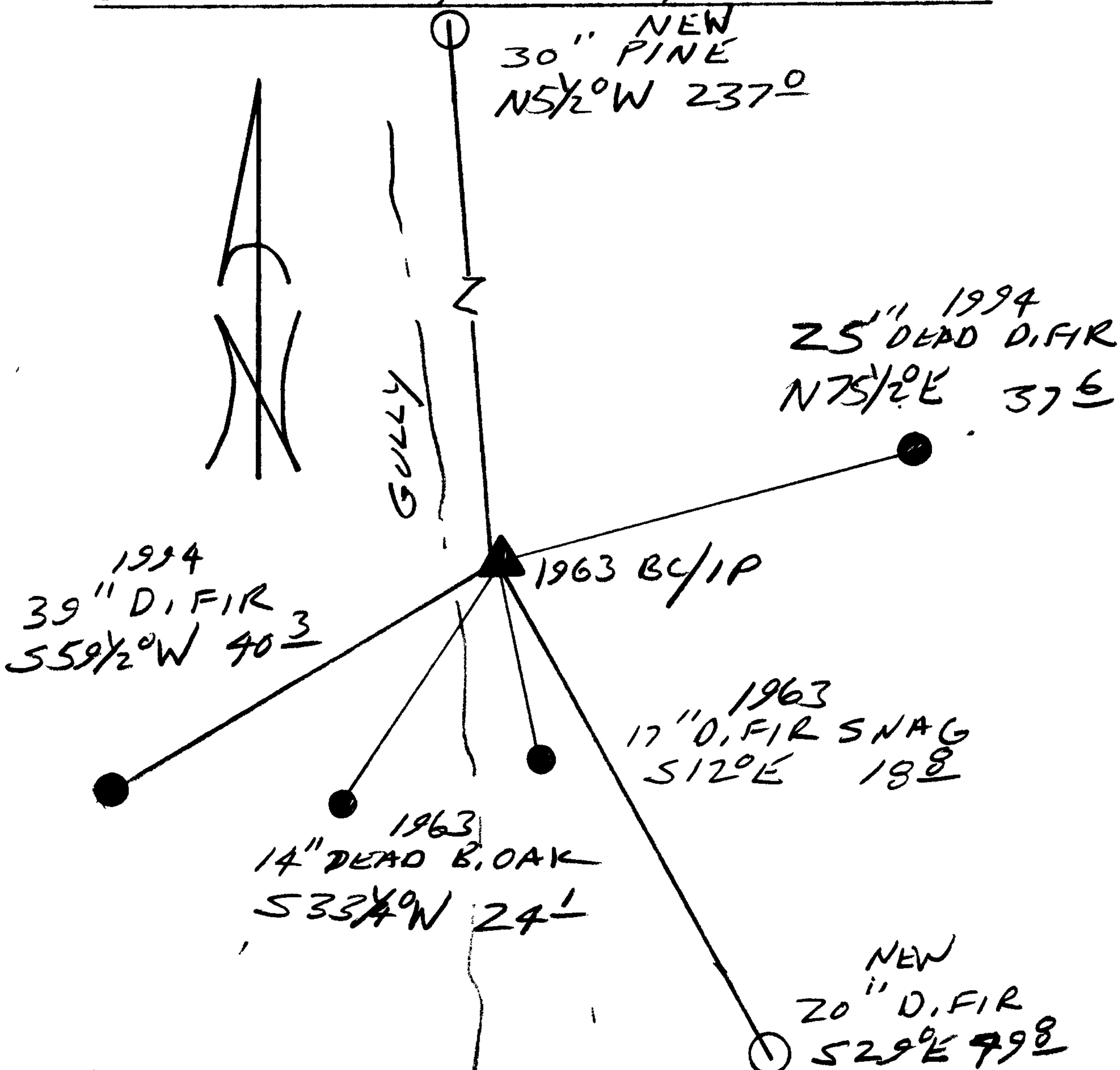
N/A

New Accessories

20" DIA D. FIR DOUBLE BLAZED AND SCRIBED "Y458CS BT"  
BEARS S29°E, 49.8 FT

30" DIA. PINE DOUBLE BLAZED AND SCRIBED "Y457CS BT"  
BEARS N5 1/2°W, 237.0 FT

Sketch of Monument, Accessories, and General Area



Location & Comments

Comp. Declin. 17 3/4° E  
 Agency W.S.C.  
 Party Chief RANDALL W. SMITH  
 Notekeeper R. W. SMITH  
 Witnesses STEPHEN J. FLAUSK

Address

Surveyor's Seal

REGISTERED  
PROFESSIONAL  
LAND SURVEYOR

*Randall W. Smith*  
EXPIRES 6-30-2000

OREGON  
JULY 25, 1980  
RANDALL W. SMITH  
2489