

RENEWAL

Monument Set (Procedure and Description)

Monument Detail

NONE

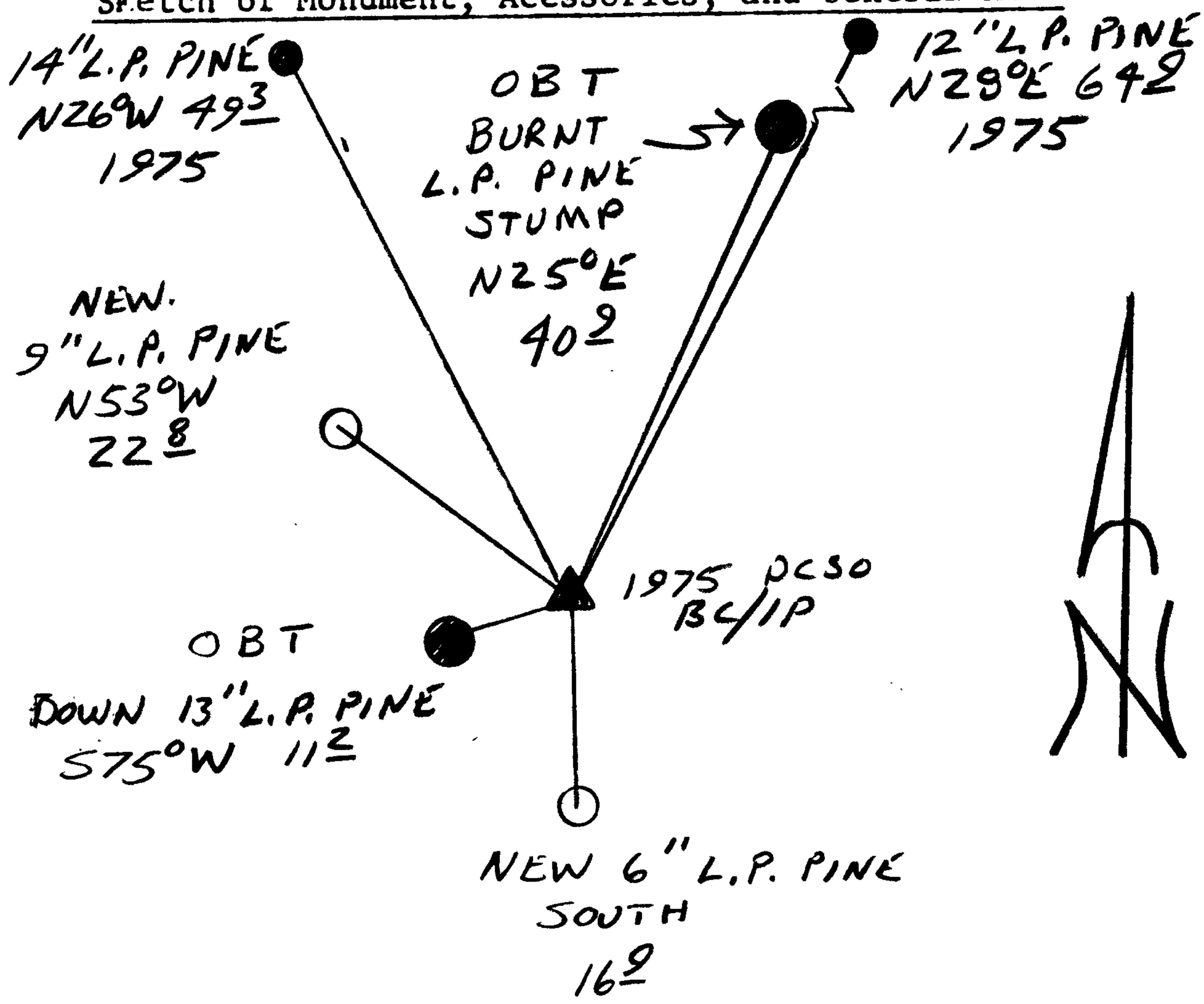
N/A

New Accessories

9" DIA. LODGE POLE PINE DOUBLE BLAZED AND SCRIBED
"T275 R6E S32 CS BT" BEARS N53°W, 22.8 FT

6" DIA. LODGE POLE PINE DOUBLE BLAZED AND SCRIBED
"SCS BT" BEARS SOUTH, 16.9 FT

Sketch of Monument, Accessories, and General Area



Location & Comments

Comp. Declin. 17 3/4° E
 Agency DCSO
 Party Chief RANDALL W SMITH
 Notekeeper [Signature]
 Witnesses STEPHEN J FLAKE

Address

Surveyor's Seal

REGISTERED
 PROFESSIONAL
 LAND SURVEYOR

[Signature]
 EXPIRES 6-30-2000

OREGON
 JULY 25, 1980
 RANDALL W. SMITH
 2490