

GOVERNMENT CORNER RESTORATION FORM

Date: 8-6-1998 By: X

Township 22 Range 8W Sec. 21 County DOUGLAS

This survey consists of:

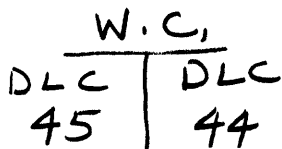
State OR Date 7-29-98 No.

Map:

Narrative:

Corner Rpt: 66/4-1

Corner Designation



DOUGLAS COUNTY

Condition SURVEYOR

Not Found

Renewed

Unrecorded

Surveyed In

Referenced Out

P.I# 044090

Previous Renewals 1913 + 1964 DCSO, 1955 + 1965, 1978 HAINES

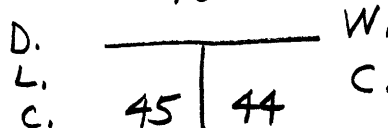
MONUMENT DETAIL

Monument(s) Found: (Condition and Source)

2 1/2" DIA. DCSO BRASS CAP CIV
A 1/2" O.D. IRON PIPE PROTRUDES
2" ABOVE GROUND. (1964 DCSO)

COUNTY SURVEYORS OFFICE
T. 22S.
R. 8W.

3/4" I.D. FIRMLY SET AND PLUMB
IRON PIPE IS FOUND 7" BELOW
GROUND, BEARS NORTH 65.0 FT
FROM W.C. (SOURCE UNKNOWN)



1" I.D. IRON PIPE PROTRUDES 17"
ABOVE GROUND, BEARS NORTH
64.6 FT FROM W.C. (SOURCE UNKNOWN)

65 FT. | N.
TO COR.
1964

HAINES "T" IRON NOT FOUND (NOTE
PER 1965 HAINES SURVEY "T" IRON IS
200 FT EAST OF CORNER POSITION.)

HAINES FINDS AND USED AN I.P. IN 1978
Accessories Found: m77-16

BRG + DIST TAKEN FROM W.C. BC/IP

22" NOW 25" DIA W. OAK WITH A FULLY HEALED
DOUBLE BLAZE, BEARS S10W, 93.2 FT
(AGREES WITH REC.) 1964

1964 POWER POLE NOW GONE

1913 COLE BT'S TIED TO W.C. BY BLM IN 1965

24" NOW 40" DIA 4 FT TALL ROTTED OAK STUMP
NO SCRIBING OR BLAZE VISIBLE, BEARS N25W, 5.1 FT
(AGREES WITH 1965 BLM REC.)

22" NOW 42" DIA 20 FT TALL ROTTED OAK SNAG
WITH A HEALED BLAZE, BEARS N80W, 465.3 FT
(AGREES WITH 1965 BLM REC.)

RENEWAL

Monument Set (Procedure and Description)

SET A 2 3/8" DIA BRASS CAP ON A 1 3/8" O.D. BY 32" LONG IRON PIPE PROTRUDING 6" ABOVE GROUND. BEARS N 43° E 75.0 FT FROM DCSO 1964 W.C.

Monument Detail

DOUGLAS COUNTY SURVEYORS
B.O.I
TO W.C.
S 43° W / 75.0 FT.
1998

NOTE

WITNESS POST AND SIGNS ADDED 1 FT WEST OF W.C. BC/IP 1964
1 FT NORTH OF B.O.I BC/IP 1998

WITNESS SIGN ADDED TO FENCE POST AT POSITION OF CORNER. POURED CONCRETE ALONG WITH BROKEN CONCRETE BLOCKS ARE ADDED AROUND BASE OF IRON PIPES

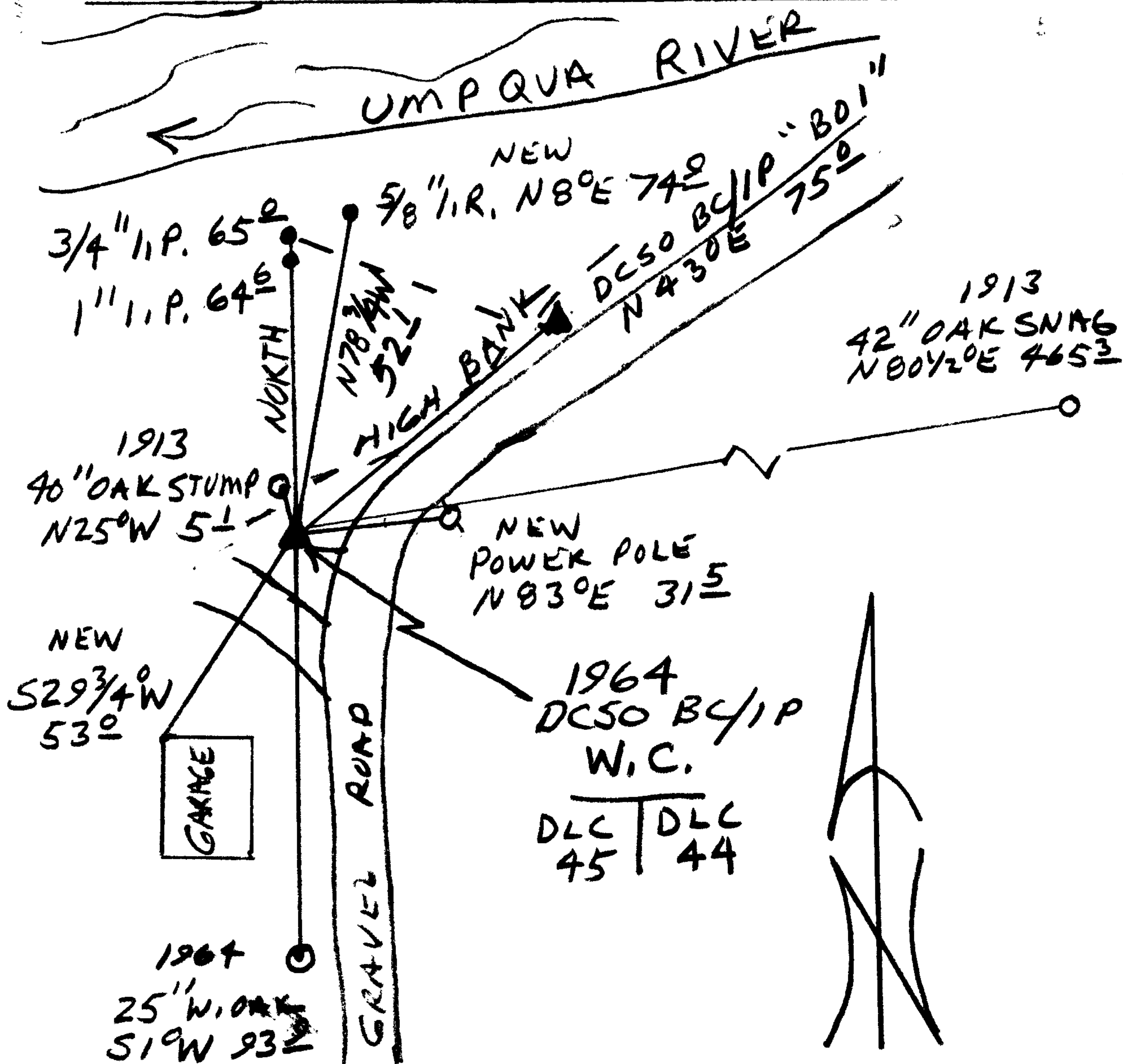
New Accessories

5/8" I.R. WITH RED PLASTIC CAP MARKED "RILEY PLS 705"
BEAR N 8° E 74.9 FT

NORTH WEST CORNER OF GARAGE, BEARS S 29 3/4° W, 53.0 FT

POWER POLE "6-306" BEARS N 83° E, 31.5 FT

Sketch of Monument, Accessories, and General Area



Location & Comments

W.C. LIES 15 FT WEST OF CORNER IN DRIVEWAY ON TOP OF HIGH BANK

Comp. Declin. 17 3/4° E
Agency DCS
Party Chief RANDALL W. SMITH
Notekeeper [Signature]
Witnesses STEPHEN J. FLAISE

Address

Surveyor's Seal

REGISTERED PROFESSIONAL LAND SURVEYOR

[Signature]
LICENSE: 6-30-2000

OREGON
JULY 25, 1990
RANDALL W. SMITH
2469