

RENEWAL

Monument Detail

Monument Set (Procedure and Description)

BC/IP RETURNED TO PLUMP AND SURROUNDED BY A MOUND OF SAND STONE

N/A

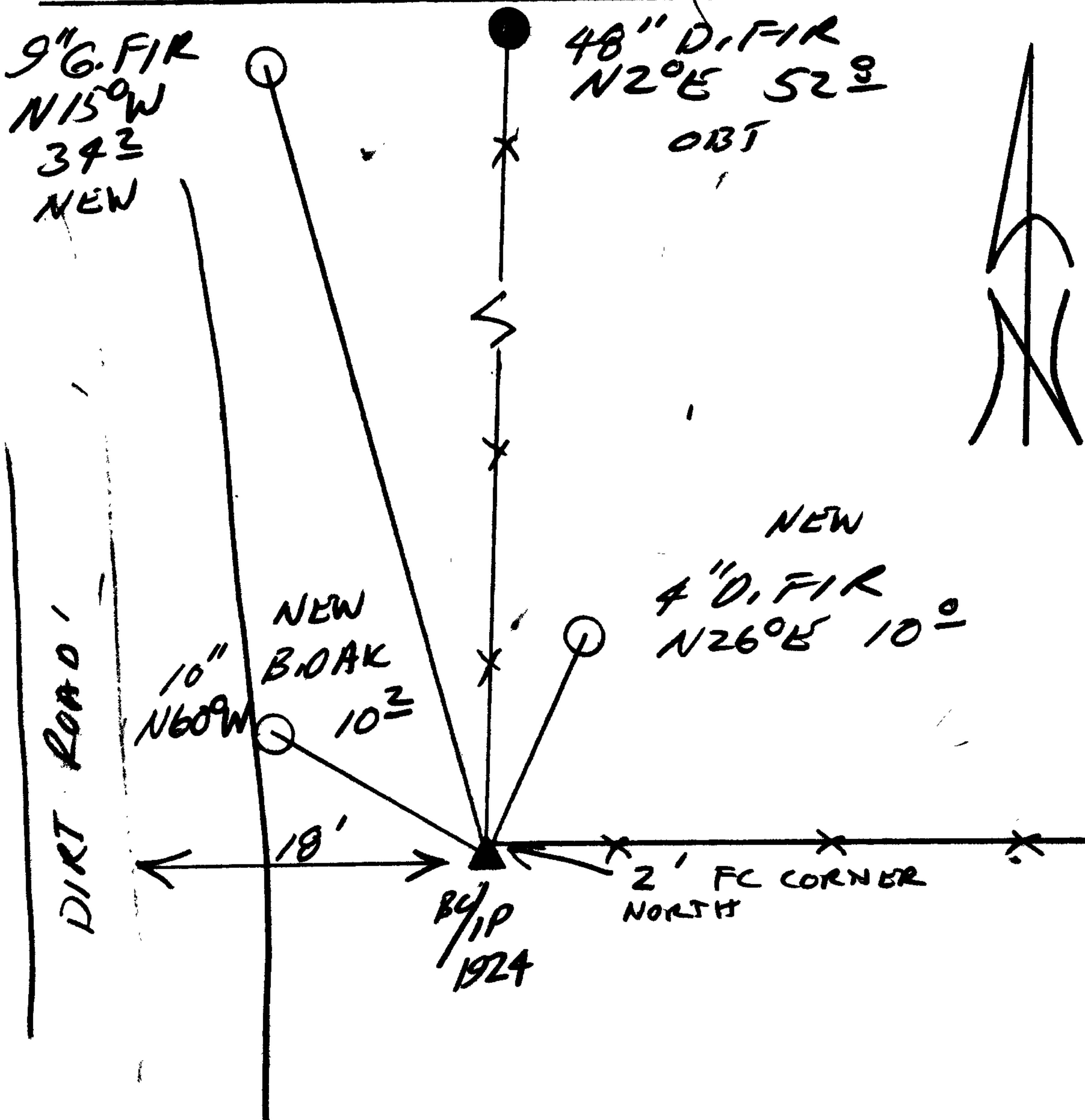
New Accessories

4" D. FIR DOUBLE BLAZED AND SCRIBED "XCSBT" BEARS N 26° E, 10.0 FT

10" B. OAK DOUBLE BLAZED AND SCRIBED "T275 R7W S31CS BT" BEARS N 60° W, 10.2 FT

9" D. FIR DOUBLE BLAZED AND SCRIBED "T275 R7W S31CS BT" BEARS N 15° W, 34.2 FT

Sketch of Monument, Accessories, and General Area



Location & Comments

CORNER LIES 2 FT SOUTH OF A FENCE CORNER WITH FENCE RUNNING NORTH AND WEST.

18' EAST OF A DIRT ROAD

Comp. Declin. 17 3/4° E
Agency DESO
Party Chief RANDALL W. SMITH
Notekeeper
Witnesses STEPHEN J. FRANK

Address

Surveyor's Seal

REGISTERED PROFESSIONAL LAND SURVEYOR
RANDALL W. SMITH
EXPIRES 6-30-28
OREGON
JULY 26, 1990
RANDALL W. SMITH
2469