



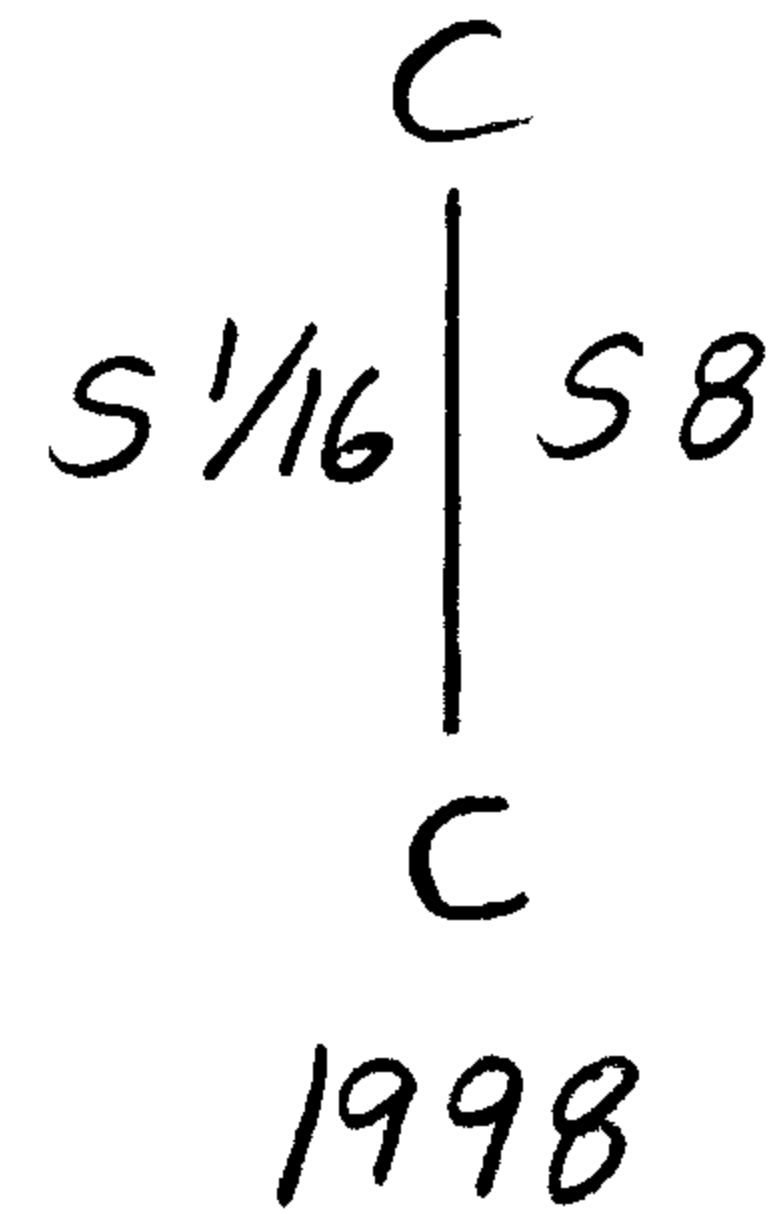
RENEWAL

Monument Set (Procedure and Description)

MONUMENT SET IN CONJUNCTION WITH DCSD  
 SURVEY OF COUNTY OWNED PROPERTY IN THE NE QUARTER  
 OF SECTION 8.  
 A 2 3/8 INCH DIAMETER BRASS CAP, MARKED  
 AS AT RIGHT, ON A 1 3/8 INCH OUTSIDE DIAM-  
 ETER IRON PIPE, 32 INCHES LONG, FIRMLY SET  
 AND PROTRUDING 6 INCHES ABOVE GROUND.

Monument Detail

DOUGLAS CO SURVEYORS OFFICE

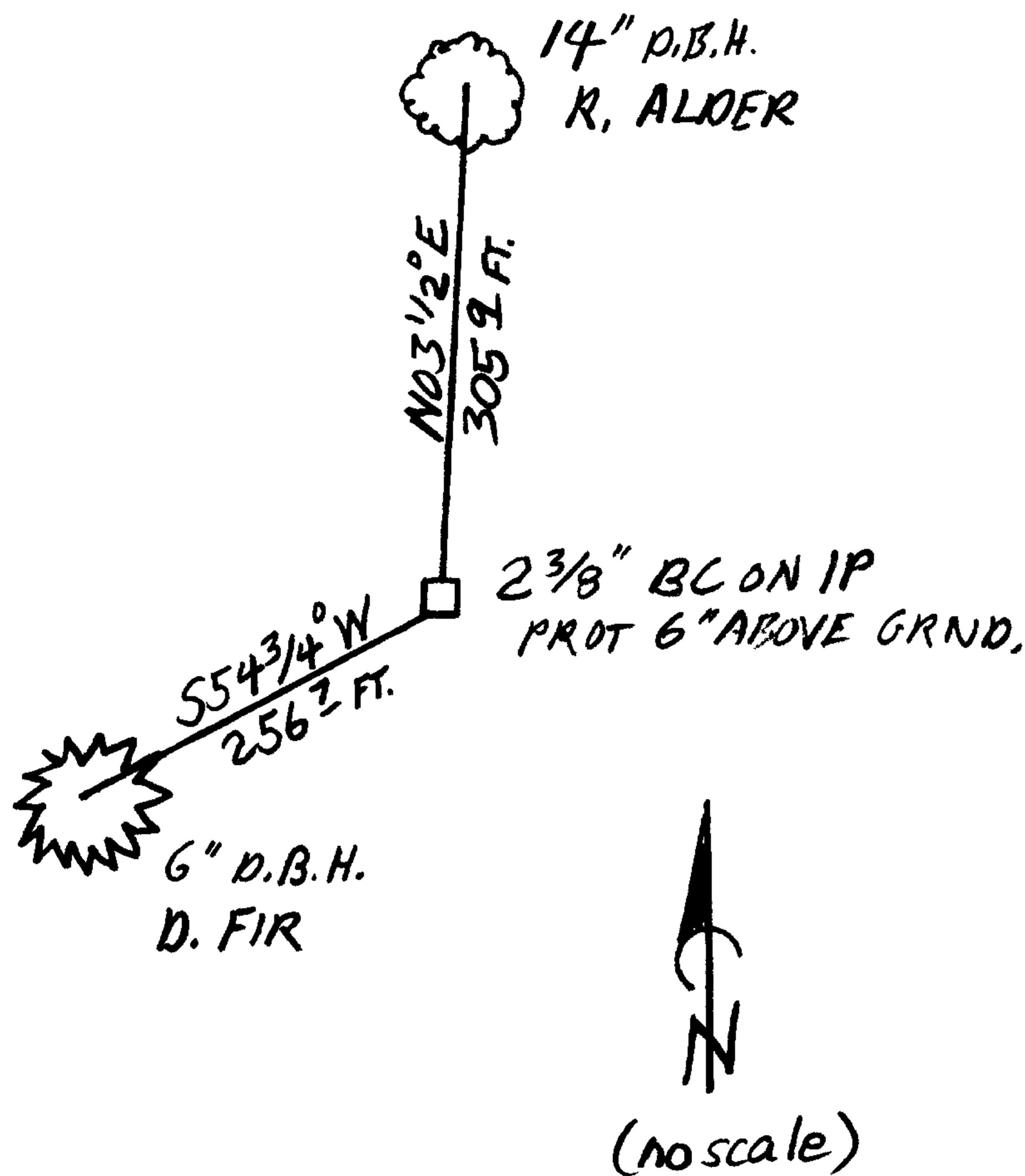


New Accessories

A 14 INCH D.B.H. RED ALDER SCRIBED "CS 1/16 S 8 CS BT" ON A  
 DOUBLE BLAZE BEARS N 03 1/2° E, 305 ± FEET DISTANT.

A 6 INCH D.B.H. DOUGLAS FIR SCRIBED "CS 1/16 S 8 CS BT" ON A DOUBLE  
 BLAZE BEARS S 54 3/4° W, 256 ± FEET DISTANT.

Sketch of Monument, Accessories, and General Area



Location & Comments

MONUMENT IS IN PASTURE  
 BOTTOM LAND AT THE EAST EDGE  
 AND NORTH END OF A SMALL  
 CANYON. THIS CANYON RUNS  
 SOUTHERLY FROM A POINT NEAR  
 THE WEST END OF A SMALL VALLEY  
 WHICH RUNS EAST TO THE SMITH  
 RIVER.

Comp. Declin. 17 3/4°  
 Agency \_\_\_\_\_  
 Party Chief STEPHEN JOHN FLAUSE  
 Notekeeper Stephen John Flause  
 Witnesses JOHN PIKE

Address

Surveyor's Seal

REGISTERED  
 PROFESSIONAL  
 LAND SURVEYOR

*Charles W. Smith*  
 APR 05 6-30-98

OREGON  
 JULY 25, 1980  
 RANDALL W. SMITH  
 2468

CS 66/2-27b

CS 1/16 S8

DOUGLAS CO SURVEYORS  
C

136 POINT 6 IN S 1/16 S8

C  
1998

14" RAILROAD CS 1/16 S8 CS BT ON DB

N 03 1/2° E, 305.9

6" D. FMR CS 1/16 S8 CS BT ON DB

S 54 3/4° W, 256.7

C.S. File No. 66/2-27C