

GOVERNMENT CORNER RESTORATION FORM

Date: 5/13/1998 By: DC

Township 28S Range 7W Sec. 2

County DOUGLAS

This survey consists of:

State OR Date 5-12-98

No.

Narrative:

Corner Rpt: 66/2-25

Corner Designation

ONLY
S3/S2

- DOUGLAS COUNTY
- Condition Report Only
- Not Found
- Renewed
- Unrecorded
- Surveyed In
- Referenced Out

Previous Renewals 1924 GLO

Monument(s) Found: (Condition and Source)

2" O.D. IRON PIPE 3" BELOW GROUND. 2 1/2" DIA BRASS CAP AND 12" O.D. IRON PIPE ARE FOUND SOUTH OF CORNER LOSS ON TOP OF GROUND IN FENCE LINE. (1924)

U S GENERAL LAND OFFICE

S3 | S2
T28S R7W
1924
SURVEY

Accessories Found:

5" NW 7" DIA 6" HIGH APPLE STUMP NO BLAZES OR SCRIBING VISIBLE, BEARS S79°E, 227.0 FT (AGREES WITH REC.) 1924

T27S

1924 GLO BRASS CAP IRON PIPE S34 | S35 7
1924 W
AGREES WITH REC. S84°53'W 401.8 FT 1924
BLAZES

1924 SW BT NOT FOUND

RENEWAL

Monument Set (Procedure and Description)

2 3/8" DIA. BRASS CAPONIA
 1 3/8" O.D. BY 32" LONG IRON
 PIPE IS SET AT PLUMB
 POSITION OF FOUND
 24" LONG IRON PIPE IN GROUND
 WITH FRANGES, BC/IP IS SET 2"
 BELOW GROUND, PIECES
 OF 1924 BC/IP ARE BELOW
 GROUND ALONG S + E EDGES OF
 BC/IP

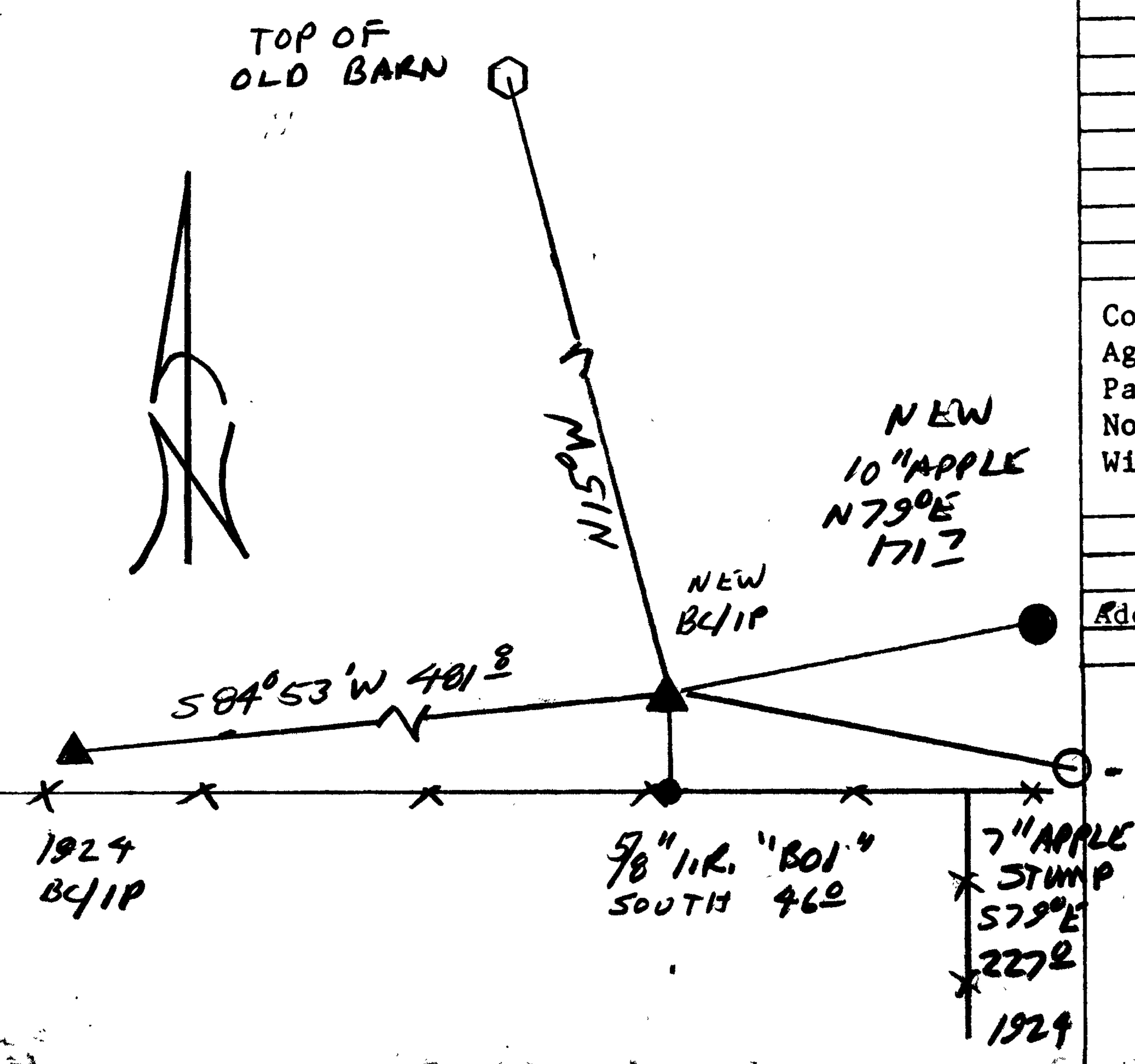
Monument Detail

DOUGLAS COUNTY SURVEYORS
 T285
 R
 S3/S2 7
 W
 1998
 OFFICE

New Accessories

10" DIA. APPLE DOUBLE BLAZED AND SCRIBED "XCS BT"
 BEARS N 79° E, 171.7 FT (NOTE BT OUT OF SECTION)
 5/8" I.R. WITH DCSO ALUM CAP STAMPED "B01" BEARS
 SOUTH, 46.0 FT SET IN FENCE LINE 3" ABOVE GROUND
 TOP POINT OF BARN (OLD OXAGON SHAPED) BEARS N 15° W

Sketch of Monument, Accessories, and General Area



Location & Comments

Comp. Declin. 17 3/4' E
 Agency DCSO
 Party Chief RANDALL W. SMITH
 Notekeeper
 Witnesses STEPHEN J. FLAUSCH

Address

Surveyor's Seal

REGISTERED
 PROFESSIONAL
 LAND SURVEYOR
 RANDALL W. SMITH
 2489
 OREGON
 JULY 25, 1980