

GOVERNMENT CORNER RESTORATION FORM

Date: 5-12-1998 By: SC

Township 28 Range 07 Sec. 13 County DOUGLAS

This survey consists of: \_\_\_\_\_

State OR Date 4-29-98

Narrative: \_\_\_\_\_

Corner Rpt: 66/2-19

Corner Designation

1/4 S14 | S13

DOUGLAS COUNTY

Condition: RENEWED Only

Not Found

Renewed

Unrecorded

Surveyed In

Referenced Out

Previous Renewals 1961

MONUMENT DETAIL

Monument(s) Found: (Condition and Source)

2 1/2" DIA. BRASS CAP ON A 1 1/2" O.D. IRON PIPE, PROTRUDS 14" ABOVE GROUND IN A N-S FENCE LINE (1961)

COUNTY SURVEYORS OFFICE  
T28S R7W

1/4 S14 | S13  
1961

Accessories Found:

14" NOW 10" DIA DOWN AND ROTTED B.OAK NEAR REC. "N82°W 148.5 FT" OBT

8" NOW 26" DIA NEARLY DEAD B.OAK WITH A PREVIOUSLY OPENED UNHEALED ROTTED BLAZE, BEARS N64°E 101.0 FT (AGREES WITH REC.) OBT

14" NOW 18" DIA. B.OAK WITH A FULLY HEALED DOUBLE BLAZE, BEARS S60°E, 26.4 FT (REC S52°E, 27.0 FT) 1961

12" NOW 17" DIA. W.OAK WITH A FULLY HEALED DOUBLE BLAZE BEARS S88 1/2°W 78.6 FT (REC N88 1/2°W, 79.1 FT. POSSIBLY READ BEARING WRONG IN 1961)

RENEWAL

Monument Set (Procedure and Description)

NONE

Monument Detail

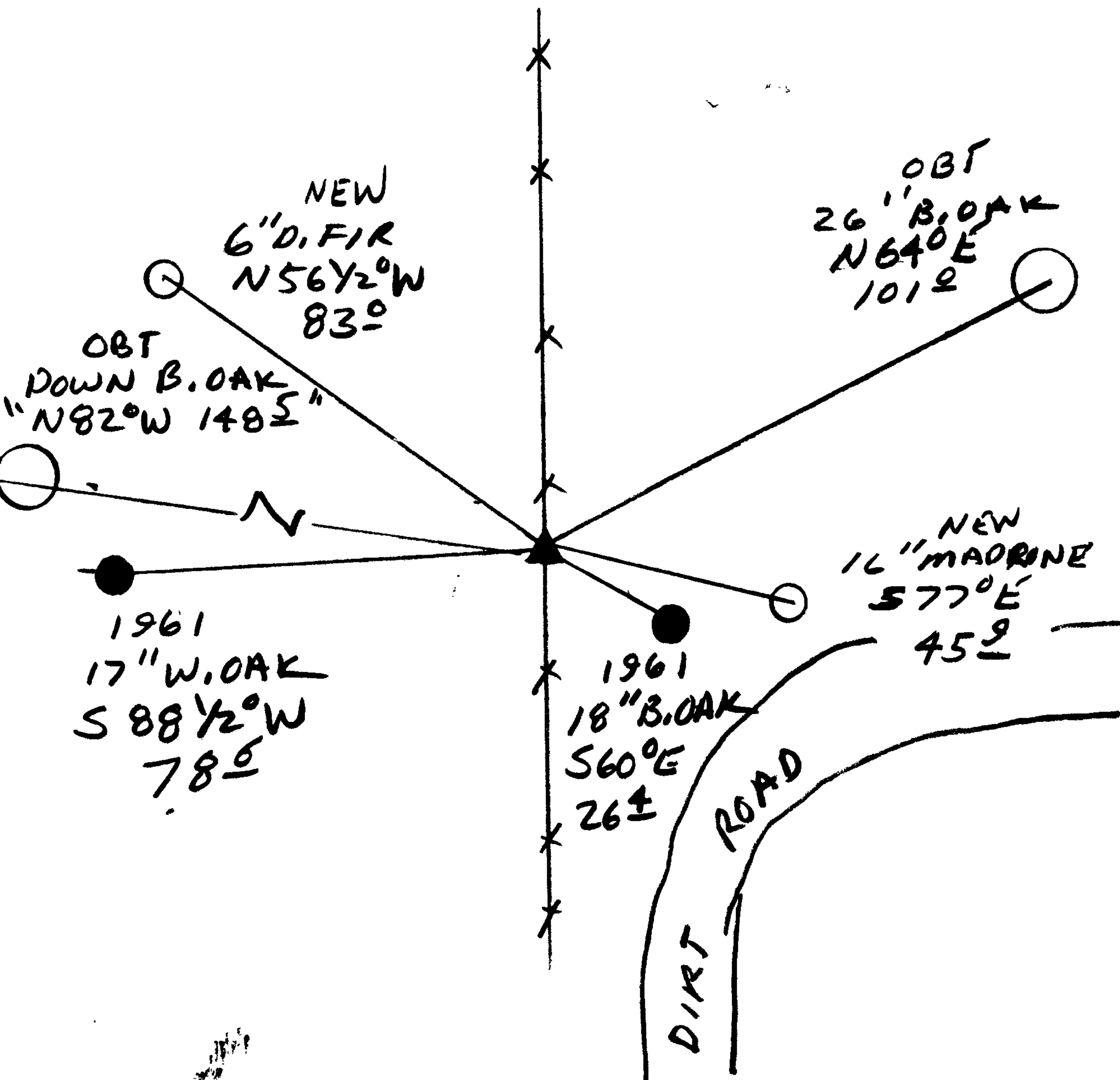
N/A

New Accessories

16" DIA MADRONE DOUBLE BLAZED AND SCRIBED "Y4S13CSBT"  
BEARS S 77° E, 45.9 FT

6" DIA. D. FIR DOUBLE BLAZED AND SCRIBED "Y4S14CSBT"  
BEARS N 56 1/2° W, 83.0 FT

Sketch of Monument, Accessories, and General Area



Location & Comments

Comp. Declin. 17 3/4° E  
 Agency UCSO  
 Party Chief RANDALL W. SMITH  
 Notekeeper [Signature]  
 Witnesses STEPHEN J. FLAUSCH

Address

Surveyor's Seal

REGISTERED  
 PROFESSIONAL  
 LAND SURVEYOR

*[Signature]*  
 EXPIRES 6-30-28

OREGON  
 JULY 25, 1990  
 RANDALL W. SMITH  
 2469