

GOVERNMENT CORNER RESTORATION FORM

Date: 3-14-1998 By: X

This survey consists of:

Township 22S Range 7W Sec. 16 County DOUGLAS Map:

State OR Date 3-11-98 No.

Narrative:

Corner Rpt: 66/2-5

Corner Designation

1/4 S17/S16

DOUGLAS COUNTY

Condition Report Only

Not Found

Renewed

Unrecorded

Surveyed In

Referenced Out

Previous Renewals 1871 GLO, 1913 BOYER, 1961 HAINES

Monument(s) Found: (Condition and Source)

1962 DCSD

T IRON, PROTRUDES 6" ABOVE GROUND. 1961 HAINES

MONUMENT DETAIL

N/A

Accessories Found:

3" NOW 13" DIA D. FIR WITH A HEALED BLAZE; BEARS S 86° E, 41.0 FT (AGREES WITH REC.) 1962 DCSD WE RE-Scribe "1/4 S16 CS 13T" ON A SINGLE BLAZE.

14" NOW NEARLY ROTTED TO GROUND REMAINS OF A D. FIR STUMP FOUND NEAR RECORD BEARING "S 49 1/2° E, 21.1 FT" NO BLAZES OR SCRIBING VISIBLE. 1913 BOYER

12" NOW 24" DIA 2 FT HIGH D. FIR STUMP; NO BLAZES VISIBLE, BEARS S 49° W, 17.8 FT. (REC. S 44 1/2° W, 17.8 FT) 1913 BOYER STUMP IS SOLID

RENEWAL

Monument Set (Procedure and Description)

Monument Detail

NONE  
 CORNER LIES IN AN EAST WEST  
 FENCE LINE

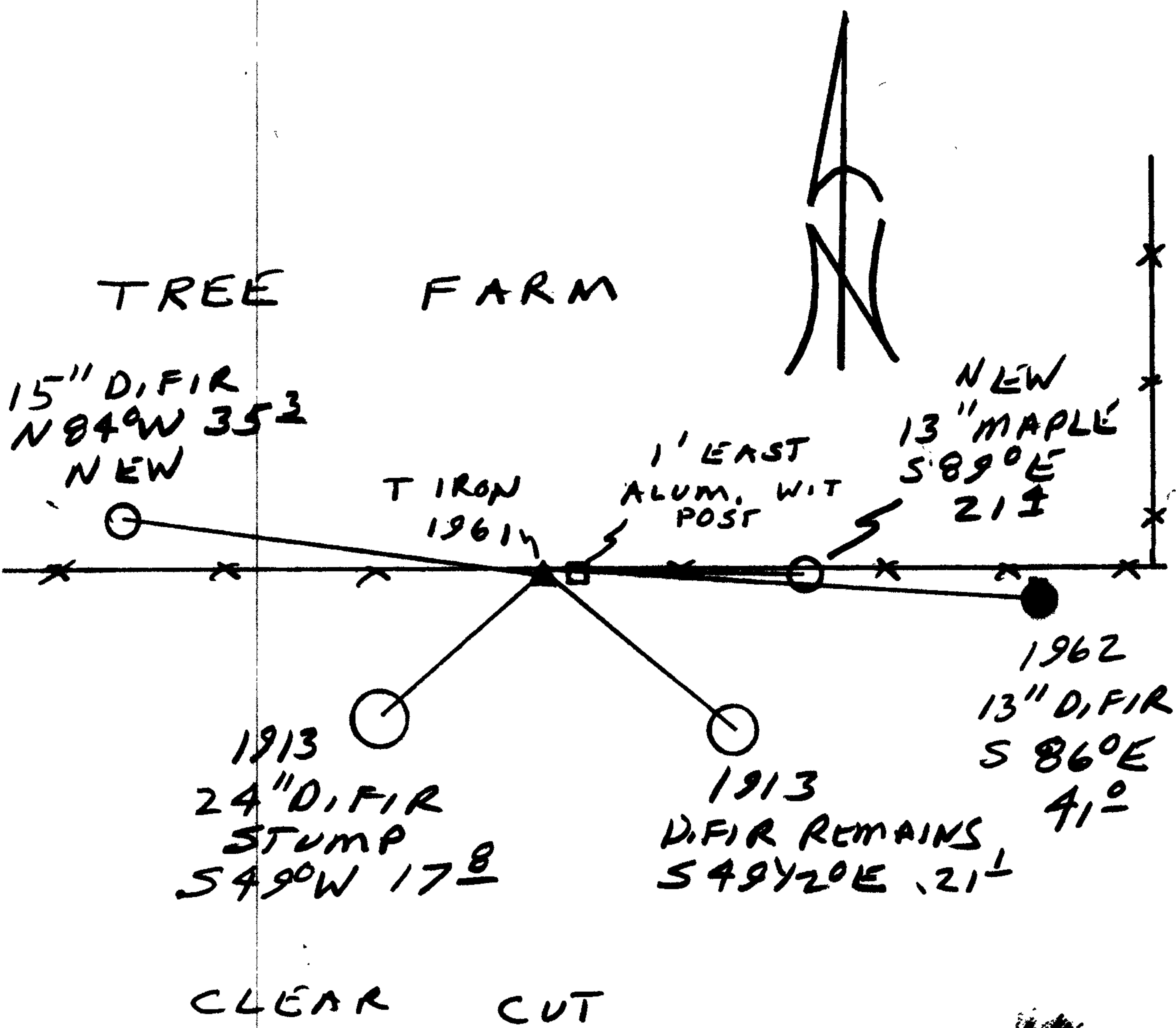
N/A

New Accessories

15" DIA. D. FIR DOUBLE BLAZED AND SCRIBED "Y4S17CS BT"  
 BEARS N 89° W, 35.3 FT.

13" DIA PISTOL BUTT MAPLE WITH FENCE WIRE ON NORTH  
 AND SOUTH SIDE OF TRUNK, SINGLE BLAZED 5 FT ABOVE  
 GROUND "Y4S16CS BT" CENTER OF ROOT CROWN, BEARS  
 S 89° E, 21.4 FT

Sketch of Monument, Accessories, and General Area



Location & Comments

ALUMINUM WITNESS POST  
 15 FT EAST OF  
 T IRON. FENCE CORNER  
 WITH FENCE RUNNING  
 NORTH AND WEST APPROX.  
 50 FT EAST OF CORNER

(1962 OCSO RENEWAL NOTES  
 THIS CORNER AS THE 1855 COR)

Comp. Declin. 17 3/4° E  
 Agency OCSO  
 Party Chief RANDALL W. SMITH  
 Notekeeper [Signature]  
 Witnesses STEPHEN J. FLAVES

Address

Surveyor's Seal

REGISTERED  
 PROFESSIONAL  
 LAND SURVEYOR

Randall W. Smith  
 EXPIRES 6-30-98

OREGON  
 JULY 28, 1990  
 RANDALL W. SMITH  
 2408