

GOVERNMENT CORNER RESTORATION FORM

Date: 3-16-1998 By: JC

This survey consists of:

Township 25S Range 7W Sec. 14

County DOUGLAS Map:

State OR Date 3-10-98

No.

Narrative:

Corner Rpt: 66/2-1

Corner Designation

S15 | S14

S22 | S23

DOUGLAS COUNTY SURVEYOR

- Condition Report Only
- Not Found
- Renewed
- Unrecorded
- Surveyed In
- Referenced Out

Previous Renewals 1944 + 1959 DC50

Monument(s) Found: (Condition and Source)

2 1/2" DIA BRASS CAP ON A
1 1/2" O.D. IRON PIPE, PROTRUDING
6" ABOVE A MOUND OF SAND
STONE. 1959

COUNTY SURVEYORS OFFICE

T25S 127W

S15 | S14

S22 | S23

1959

Accessories Found:

10" NOW 13" DIA 2 FT HIGH OAK STUMP WITH
ILLEGIBLE SCRIBING VISIBLY, BEARS N 55° W,
40.9 FT. (AGREES WITH REC.) CRT

20" NOW 24" DIA 2 FT HIGH CEDAR STUMP WITH
A PARTIALLY HEALED BLAZE, BEARS S 65 1/2° W, 22.4 FT
(AGREES WITH REC.) 1944 (ILLEGIBLE SCRIBING
VISIBLE ON BLAZE)

8" NOW 24" DIA 2 FT HIGH D. FIR STUMP WITH A FULLY
HEALED DOUBLE BLAZE, BEARS N 4 1/2° W, 33.7 FT
(AGREES WITH REC.) 1959

5" NOW 10" DIA T. CEDAR WITH A FULLY HEALED DOUBLE
BLAZE, BEARS N 70° E, 29.7 FT (AGREES WITH REC.) 1959

24" NOW 32" DIA 2 FT HIGH D. FIR STUMP WITH A
HEALED BLAZE, BEARS S 56 1/2° E, 31.4 FT (AGREES
WITH REC.) 1959

RENEWAL

Monument Set (Procedure and Description)

Monument Detail

NONE

N/A

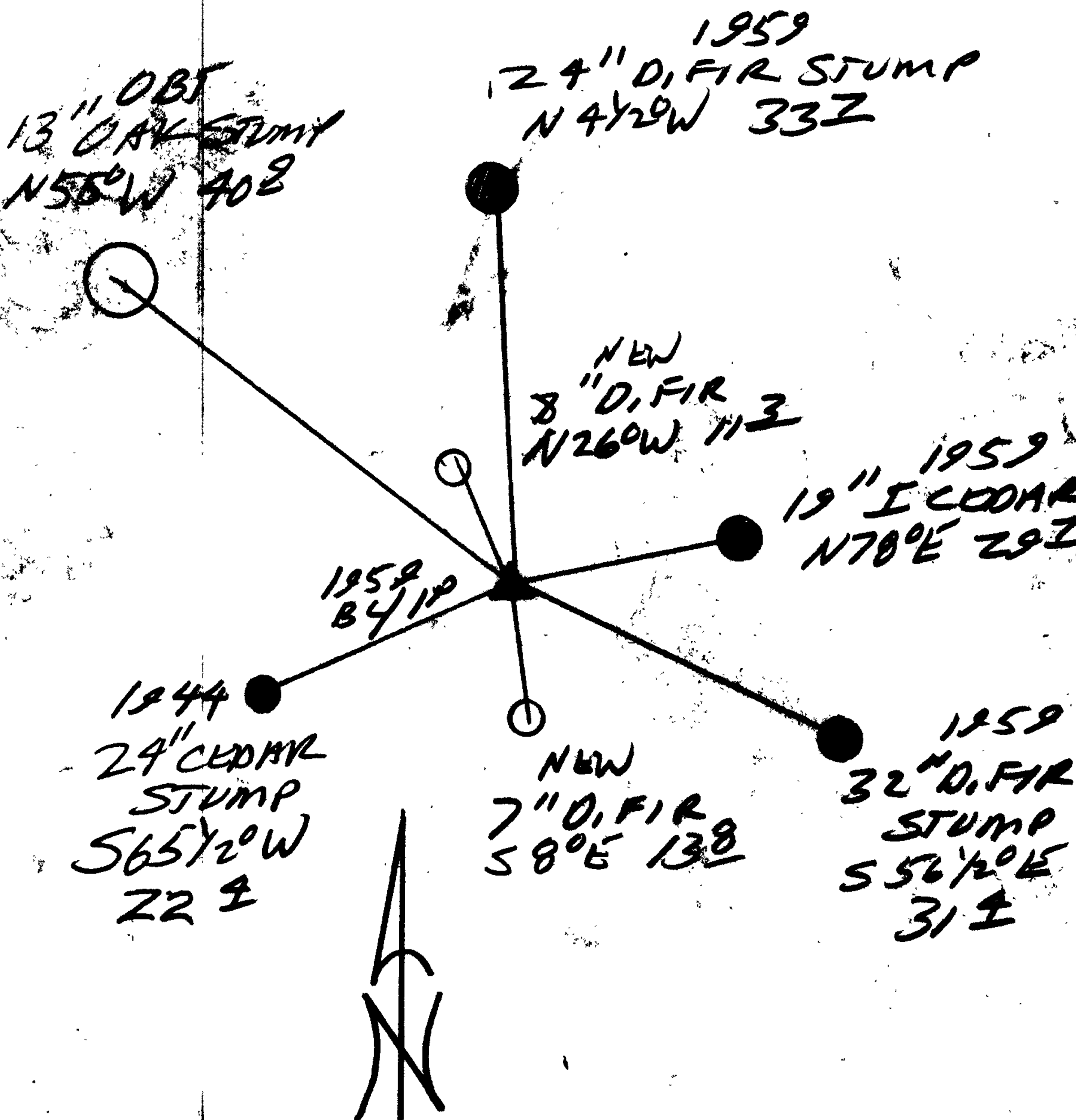
New Accessories

7" DIA D.FIR DOUBLE BLAZED AND SCRIBED
7255 R7W S23CS BT' BEARS S80°E, 13.8 FT

7" DIA D.FIR DOUBLE BLAZED AND SCRIBED
7255 R7W S15CS BT' BEARS N26°W 11.3 FT

Sketch of Monument, Accessories, and General Area

Location & Comments



Comp. Declin. 173/4°E
 Agency DCS
 Party Chief RANDALL W. SMITH
 Notekeeper [Signature]
 Witnesses STEPHEN J. FRAUSE

Address

Surveyor's Seal

REGISTERED
PROFESSIONAL
LAND SURVEYOR

[Signature]
E-3-28

OREGON
JULY 25, 1980
RANDALL W. SMITH
29