

OREGON CORNER RESTORATION FORM

SECTION 24 TOWNSHIP 25 S. RANGE 4 W.
COUNTY DOUGLAS DATE 3/2/2020 TRACT MT. SCOTT #9
POINT IDENTIFIER 640400

CORNER DESIGNATION:

T25S R4W

S13 1/4
○
S24

_____ CONDITION REPORT ONLY
_____ NOT FOUND
_____ **X** RENEWED
_____ UNRECORDED
_____ SURVEYED IN
_____ REFERENCED OUT

PREVIOUS RENEWALS/SURVEYS, ETC.:

BLM BCIP SET IN VOL. 29 PAGES 12273-74, RENEWED BY DOUGLAS COUNTY SURVEYORS OFFICE IN 1964
CS FILE 53 / 47, RENEWED BY K. HOFFINE IN 2997 CS FILE 65 / 60-30.

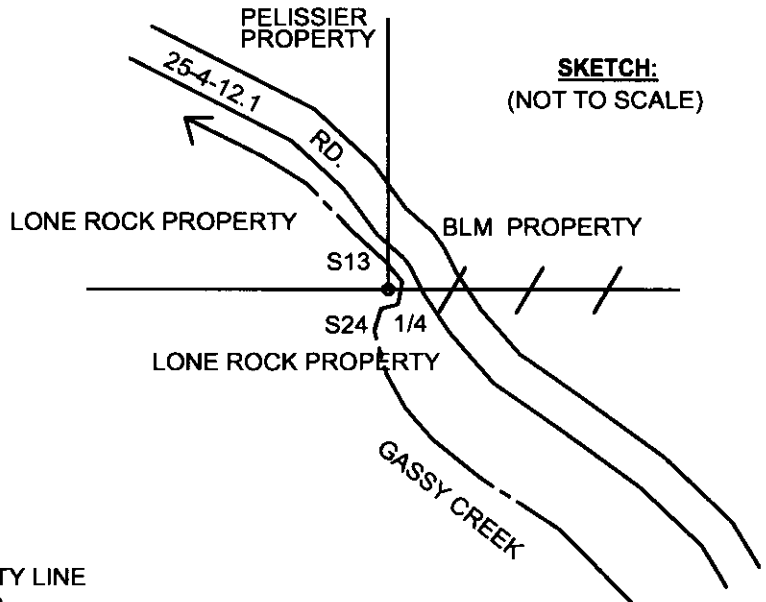
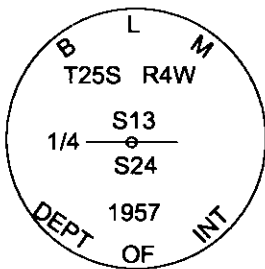
ACCESSORIES FOUND: (CONDITION AND SOURCE)

24" CEDAR BEARS S13 1/2°W 133.9 FT. (DCSO RECORD S13 1/2° W 204 LKS. 134.64 FT. BLM RECORD 104 LKS.)

HEALED FACE AND TAG

RECORD 6" ALDER AT N55°W 10.7 FT. IS FOUND DOWN AND UPROOTED IN GASSY CREEK

MONUMENT DETAIL:



SKETCH:
(NOT TO SCALE)

MONUMENT:

FOUND 1957 BLM BCIP 0.1 FT. ABOVE GROUND ON WEST BANK OF GASSY CREEK PER BLM FIELD NOTES
VOL. 29 PAGES 12273 -74

NEW ACCESSORIES:

13" CEDAR BEARS N80 1/2°E 54.9 FT. WE SCRIBE T25S R4W 1/4 S13 BT AND TAG TREE

15" DOUG FIR BEARS S83°W 42.0 FT. WE SCRIBE T25S R4W 1/4 S24 BT AND TAG TREE

20" CEDAR BEARS S81 3/4°E 51.4 FT. WE SCRIBE T25S R4W 1/4 S24 BT AND TAG TREE

LOCATION & COMMENTS:

FOUND 1957 BLM BCIP APPROX. 20 FT. SOUTH,
10 FT. WEST, AND 30 FT. NORTH OF GASSY
CREEK, ON SMALL POINT OF LAND. CORNER
MONUMENT IS APPROX 35 FT. WEST OF GASSY
CREEK ROAD 25-4-12.1. METAL FENCE POST
ALONGSIDE CORNER MONUMENT.

BEARING BASIS: RECORD BLM BEARING
BASED ON EXISTING CEDAR
BEARING TREE AT S13 1/2°W
FIRM/AGENCY: LONE ROCK TIMBER MANAGEMENT CO.
ADDRESS: P.O. BOX 1127
ROSEBURG, OR 97470
PARTY CHIEF: KEN W. HOFFINE
NOTES: GARY ANGIOLET
WITNESS: IGNACIO ROMAN

FILED

Date: 7-6-2020 **By:** JC
This survey consists of:

Map: _____

Narrative: _____
Corner Rpt: CS 65/106-38

DOUGLAS COUNTY
SURVEYOR

REGISTERED
PROFESSIONAL
LAND SURVEYOR
Ken W. Hoffine
OREGON
JULY 16, 1987
KEN W. HOFFINE
PLS 2291

C.S. FILE 65/106-38

EXPIRES 6-30-21