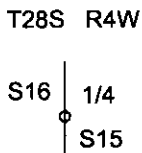


OREGON CORNER RESTORATION FORM

SECTION 16 TOWNSHIP 28 S. RANGE 4 W.
COUNTY DOUGLAS DATE 4/9/2020 TRACT BMH 7208
POINT IDENTIFIER 400440

CORNER DESIGNATION:



- CONDITION REPORT ONLY
- NOT FOUND
- RENEWED
- UNRECORDED
- SURVEYED IN
- REFERENCED OUT

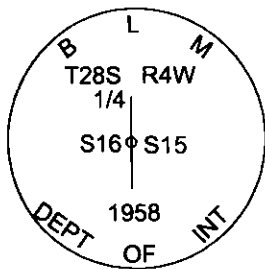
PREVIOUS RENEWALS/SURVEYS, ETC.:

1958 BLM BCIP SET IN VOL. 29 PAGES 12239-40, FILED IN DOUGLAS COUNTY SURVEYORS OFFICE

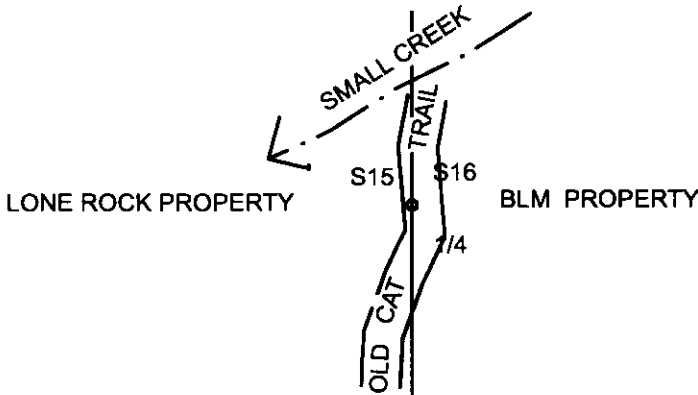
ACCESSORIES FOUND: (CONDITION AND SOURCE)

- 45° CEDAR BEARS N74°E 31.7 FT. AS PER BLM RECORD NO VISIBLE MARKS WE TAG
- 45° DOUG. FIR STUMP BEARS S52°W 25.2 FT. BLM RECORD S52°W 24.42 FT. HEALED BLAZE AND 8" DEAD DOUG. FIR GROWING OUT OF STUMP.
- 4 FOOT TALL ROTTEN STUB RECORD 14" D. FIR BEARS N66°W 5.6 FT. BLM RECORD N66°W 6.77 FT.
- 22" DOUG. FIR BEARS S51 1/2°E 19.3 FT. BLM RECORD S51 1/2°E 19.47 FT HEALED FACE AND BT TAG

MONUMENT DETAIL:



SKETCH:
(NOT TO SCALE)



MONUMENT:

FOUND 1958 BLM BCIP SET IN VOL. 29 PAGES 12239 - 40 1.0 FT. BELOW GROUND ON WEST EDGE OF OLD CAT TRAIL.

NEW ACCESSORIES:

- 18" CEDAR BEARS S66°W 31.3 FT. WE SCRIBE 1/4 S16 BT AND TAG TREE
- 10" DOUG FIR BEARS N51°W 14.15 FT. WE SCRIBE 1/4 S16 BT AND TAG TREE

LOCATION & COMMENTS:

FOUND 1958 BLM BCIP APPROX. 1.0 FT. BELOW GROUND LEVEL BURIED BY EARTH MOVEMENT FROM OLD CAT TRAIL. WE DIG UP MONUMENT AT WEST EDGE OF CAT TRAIL. MONUMENT LIES ON 50 % NORTHWESTERLY SIDE SLOPE, AND IS 51 FEET SOUTH OF SMALL CREEK THAT FLOWS SOUTHWESTERLY.

BEARING BASIS: RECORD BLM BEARINGS
CHECKED WITH HAND COMPASS
(15° EAST DECLINATION)
FIRM/AGENCY: LONE ROCK TIMBER MANAGEMENT CO.
ADDRESS: P.O. BOX 1127
ROSEBURG, OR 97470
PARTY CHIEF: KEN W. HOFFINE
NOTES: GARY ANGIOLET
WITNESS: _____

FILED

Date: 7-6-2020 By: JL

This survey consists of:

Map: _____

Narrative: _____
Corner Rpt: CS 65/106-37

DOUGLAS COUNTY
SURVEYOR

C.S. FILE 65/106-37

REGISTERED
PROFESSIONAL
LAND SURVEYOR

OREGON
JULY 16, 1987
KEN W. HOFFINE
PLS 2291

EXPIRES 6-30-21