

LANE COUNTY SURVEYORS OFFICE
DEPARTMENT OF PUBLIC WORKS

FILE NO: 24-15-07 SW
TRGCDB: 2415100500
INDEX NO: 16091

2015 [8]
SET 5/8"x30" REBAR W/ 2" ALUM. CAP
"LCSO-RP1-2015", 4" BELOW SURFACE
N 6° 12' E, 71.75'

NOTE:
THE CREEK IS
NEARLY MIDWAY
BETWEEN THE TWO
BRASS CAPS

FRANCIS CREEK

BLM RD 24-1-1.1

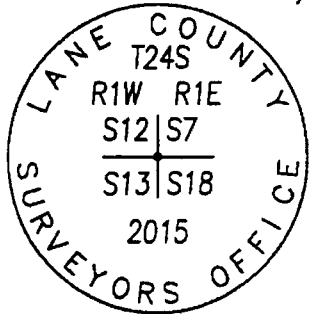
1967 [7]
12" HEMLOCK
W/ SCAR
N 54° 20' W,
19.7' TO CTR

NO SCALE

W.C.: FD. 1" I. POST
W/2-1/2" BRASS CAP
"D.C.S.O.-1967"
WEST, 75.00'

2015 [9]
SET 5/8"x30" REBAR
W/ 2" ALUM. CAP
"LCSO-RP2-2015"
4" BELOW SURFACE
S 87° 42' E, 37.64'

SET BRASS CAP



1896 [2]
47" CEDAR
LEANS TO SOUTH
S 32° 10' E, 15.1'
TO APPROX. CTR

REGISTERED
PROFESSIONAL
LAND SURVEYOR

OREGON
JUNE 13, 2008
MIKEAL J. BLOMME
74387

EXPIRES DEC 31, 2015