

SURVEY FOR: LONE ROCK TIMBER LAND COMPANY P.O. BOX 1127  
 ROSEBURG, OR. 97470  
 SURVEY BY: LONE ROCK TIMBER MANAGEMENT CO. P.O. BOX 1127  
 ROSEBURG, OR. 97470  
 SW 1/4 OF SECTION 24, TOWNSHIP 28S, RANGE 4W, W/M,  
 DOUGLAS COUNTY, OREGON TRACT; BMH 6502 DATE: 1/15/2020

FILED  
 DATE: 1-16-2020 BY: Di  
 THIS SURVEY CONSISTS OF:  
 MAP: CS 65/105-004  
 NARRATIVE:  
 CORNER RPT:  
 DOUGLAS COUNTY  
 SURVEYOR

NARRATIVE:

THE PURPOSE OF THIS SURVEY IS TO ESTABLISH AND MARK PROPERTY LINES FOR TIMBER MANAGEMENT PURPOSES FOR A FOREST LAND TRACT LOCATED IN SECTION 24 T.28S. R.4W. W.M. WE INITIATED OUR SURVEY AT THE SOUTH 1/4 (2) OF SECTION 24 FROM WHICH WE ESTABLISHED A GPS CONTROL POINT BY TRAVERSING TO A LARGE BLM LOGGING LANDING LOCATED APPROXIMATELY SOUTH 613 FEET OF THE SOUTH 1/4 CORNER. WE THEN RAN A CONVENTIONAL RANDOM TRAVERSE FROM THE SOUTH 1/4 (2), WESTERLY TO THE SOUTHWEST SECTION CORNER OF SECTION 24 (1), THENCE NORTHERLY THROUGH THE SOUTH 1/16 (3) AND THE WEST 1/4 (4) OF SECTION 24, TO A GPS CONTROL POINT WE ESTABLISHED IN AN OPENING ON THE NORTH EDGE OF THE NORTH MYRTLE COUNTY ROAD. FROM THIS GPS POINT WE COULD SEE AND CREATED AN EDM TRAVERSE POINT ACROSS THE CANYON ON A RIDGE LANDING AND TOOK GPS MEASUREMENTS ON THESE INTER-VISIBLE POINTS TO COMPUTE A BASIS OF BEARING BASE LINE. DURING THE COURSE OF OUR SURVEY WE FOUND THE BLM BRASS CAP AND PIPE AT THE SOUTH 1/16 CORNER (3) LEANING OUT OF VERTICAL ON THE STEEP SIDESLOPE. WE DUG OUT AROUND THE PIPE AND THEN STRAIGHTENED THE PIPE TO A VERTICAL PLUMB POSITION HOLDING THE BOTTOM OF THE PIPE AT THE SAME HORIZONTAL LOCATION WE FOUND IT. WE ALSO SET 2 REFERENCE RODS AT THE SOUTH 1/4 CORNER (2) AS FUTURE CONTROL TO FACILITATE EXTENSION OF THIS SURVEY TO THE EAST AT A LATER DATE. THE PROPERTY BOUNDARY LINES, AS SHOWN ON THIS MAP WERE MARKED WITH BLUE AND RED PROPERTY LINE RIBBON. TREES ALONG THE BOUNDARY LINE WERE BLAZED AND PAINTED WITH FLUORESCENT RED PAINT. METAL U-POSTS WERE PLACED ON LINE AT ROAD CROSSINGS AND LONE ROCK TIMBER ALUMINUM PROPERTY LINE TAGS WERE INSTALLED ON TREES ALONG ALL PROPERTY LINES. BEARING TREES ARE BLAZED AND SCRIBED AT THE ROOT CROWN WITH DISTANCES MEASURED TO A NAIL AT THE SIDE CENTER OF THE TREE. THE BLAZED FACES OF THE BEARING TREES ARE PAINTED FLUORESCENT RED AND A BEARING TREE TAG IS NAILED TO THE TREE. THIS SURVEY WAS DONE WITH A TOPCON ES65 TOTAL STATION AND TRIMBLE GEO 6000 XH CENTIMETER GRADE GPS WITH GARY ANGIOLET, IGNACIO ROMAN, DANIEL SAILY, AND JAKE FERGUSON ASSISTING ME.

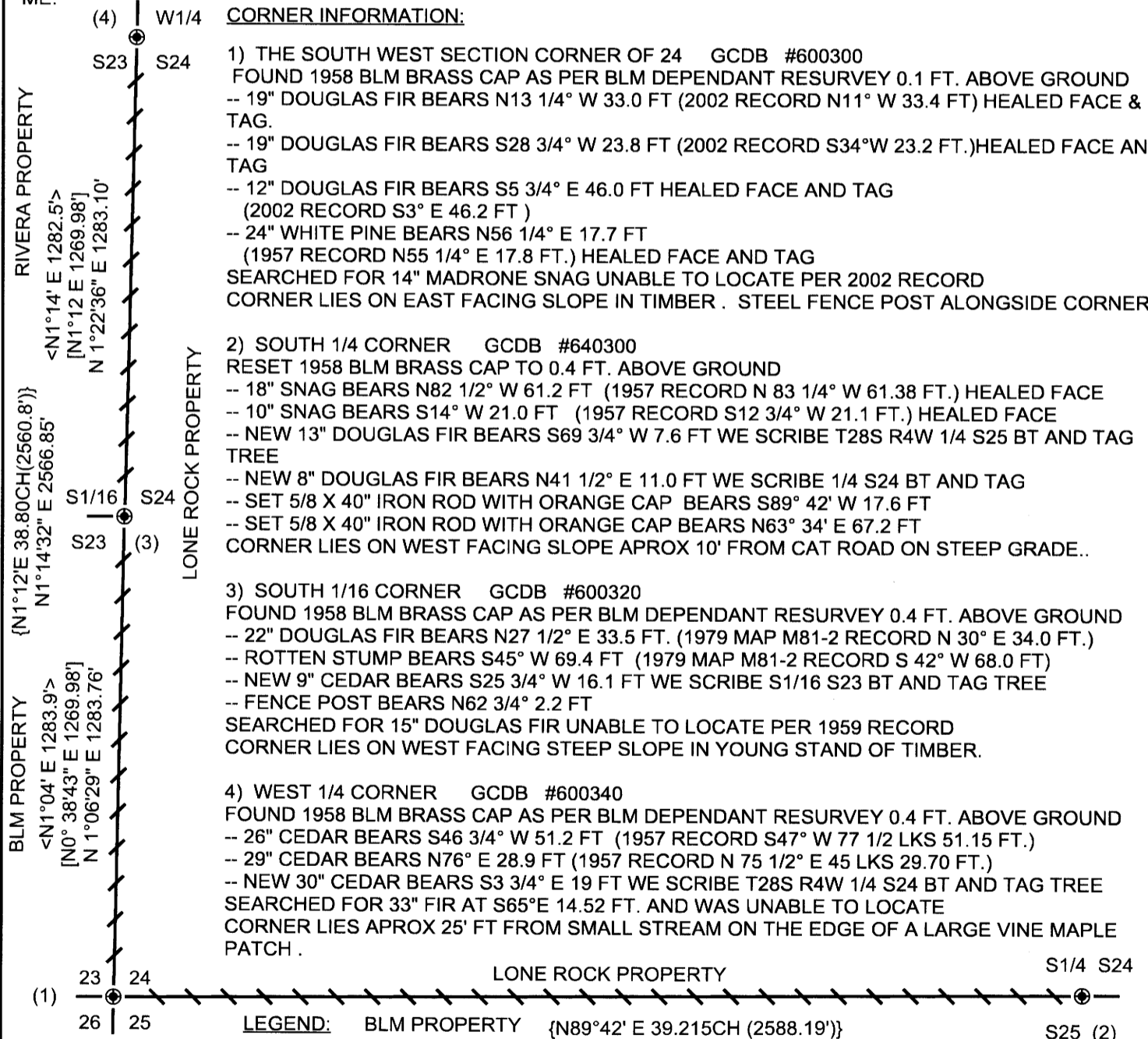
(4) W1/4 CORNER INFORMATION:

1) THE SOUTH WEST SECTION CORNER OF 24 GCDB #600300  
 FOUND 1958 BLM BRASS CAP AS PER BLM DEPENDANT RESURVEY 0.1 FT. ABOVE GROUND  
 -- 19" DOUGLAS FIR BEARS N13 1/4° W 33.0 FT (2002 RECORD N11° W 33.4 FT) HEALED FACE & TAG.  
 -- 19" DOUGLAS FIR BEARS S28 3/4° W 23.8 FT (2002 RECORD S34° W 23.2 FT.) HEALED FACE AND TAG  
 -- 12" DOUGLAS FIR BEARS S5 3/4° E 46.0 FT HEALED FACE AND TAG (2002 RECORD S3° E 46.2 FT )  
 -- 24" WHITE PINE BEARS N56 1/4° E 17.7 FT (1957 RECORD N55 1/4° E 17.8 FT.) HEALED FACE AND TAG  
 SEARCHED FOR 14" MADRONE SNAG UNABLE TO LOCATE PER 2002 RECORD  
 CORNER LIES ON EAST FACING SLOPE IN TIMBER. STEEL FENCE POST ALONGSIDE CORNER.

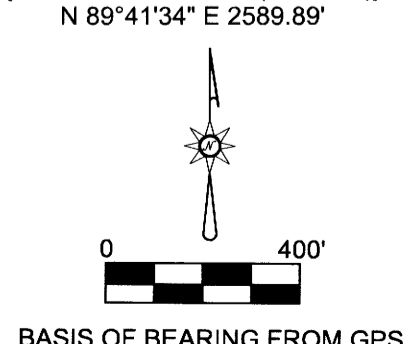
2) SOUTH 1/4 CORNER GCDB #640300  
 RESET 1958 BLM BRASS CAP TO 0.4 FT. ABOVE GROUND  
 -- 18" SNAG BEARS N82 1/2° W 61.2 FT (1957 RECORD N 83 1/4° W 61.38 FT.) HEALED FACE  
 -- 10" SNAG BEARS S14° W 21.0 FT (1957 RECORD S12 3/4° W 21.1 FT.) HEALED FACE  
 -- NEW 13" DOUGLAS FIR BEARS S69 3/4° W 7.6 FT WE SCRIBE T28S R4W 1/4 S25 BT AND TAG TREE  
 -- NEW 8" DOUGLAS FIR BEARS N41 1/2° E 11.0 FT WE SCRIBE 1/4 S24 BT AND TAG  
 -- SET 5/8 X 40" IRON ROD WITH ORANGE CAP BEARS S89° 42' W 17.6 FT  
 -- SET 5/8 X 40" IRON ROD WITH ORANGE CAP BEARS N63° 34' E 67.2 FT  
 CORNER LIES ON WEST FACING SLOPE APROX 10' FROM CAT ROAD ON STEEP GRADE..

3) SOUTH 1/16 CORNER GCDB #600320  
 FOUND 1958 BLM BRASS CAP AS PER BLM DEPENDANT RESURVEY 0.4 FT. ABOVE GROUND  
 -- 22" DOUGLAS FIR BEARS N27 1/2° E 33.5 FT. (1979 MAP M81-2 RECORD N 30° E 34.0 FT.)  
 -- ROTTEN STUMP BEARS S45° W 69.4 FT (1979 MAP M81-2 RECORD S 42° W 68.0 FT)  
 -- NEW 9" CEDAR BEARS S25 3/4° W 16.1 FT WE SCRIBE S1/16 S23 BT AND TAG TREE  
 -- FENCE POST BEARS N62 3/4° 2.2 FT  
 SEARCHED FOR 15" DOUGLAS FIR UNABLE TO LOCATE PER 1959 RECORD  
 CORNER LIES ON WEST FACING STEEP SLOPE IN YOUNG STAND OF TIMBER.

4) WEST 1/4 CORNER GCDB #600340  
 FOUND 1958 BLM BRASS CAP AS PER BLM DEPENDANT RESURVEY 0.4 FT. ABOVE GROUND  
 -- 26" CEDAR BEARS S46 3/4° W 51.2 FT (1957 RECORD S47° W 77 1/2 LKS 51.15 FT.)  
 -- 29" CEDAR BEARS N76° E 28.9 FT (1957 RECORD N 75 1/2° E 45 LKS 29.70 FT.)  
 -- NEW 30" CEDAR BEARS S3 3/4° E 19 FT WE SCRIBE T28S R4W 1/4 S24 BT AND TAG TREE  
 SEARCHED FOR 33" FIR AT S65°E 14.52 FT. AND WAS UNABLE TO LOCATE  
 CORNER LIES APROX 25' FT FROM SMALL STREAM ON THE EDGE OF A LARGE VINE MAPLE PATCH .



- LEGEND:**
- FOUND BLM BRASS CAP AS NOTED
  - < > 1979 BLM MAP M81-2 FILED IN DOUGLAS COUNTY SURVEYORS OFFICE
  - { } 1959 BLM DEPENDANT RESURVEY FILED IN DOUGLAS COUNTY SURVEYORS OFFICE
  - LINES BLAZED PAINTED TAGGED RIBBONED WITH BLUE AND RED PROPERTY LINE AND POSTED AT ROAD CROSSINGS
  - [ ] BLOOM'S 1974 MAP M49-72 FILED IN DOUGLAS COUNTY SURVEYORS OFFICE



REGISTERED  
 PROFESSIONAL  
 LAND SURVEYOR

*Ken W. Hoffine*

OREGON  
 JULY 16, 1987  
 KEN W. HOFFINE  
 2291

EXPIRES: 6/30/2021