

OREGON CORNER RESTORATION FORM

SECTION 20 TOWNSHIP 29 S. RANGE 3 W.
COUNTY DOUGLAS DATE 2/14/2020 TRACT BMH 7216
POINT IDENTIFIER 300340

CORNER DESIGNATION:

T29S R3W
E 1/4 S21
S20

X

CONDITION REPORT ONLY
NOT FOUND
RENEWED
UNRECORDED
SURVEYED IN
REFERENCED OUT

FILED

Date: 3/10/2020 By: K
This survey consists of
Map: _____
Narrative: _____
Corner Rpt: 65/104-39

PREVIOUS RENEWALS/SURVEYS, ETC:

EVANS SETS IRON PIPE IN 1952, BYRON SETS COUNTY CAP FROM BEARING TREES IN 1962,
REFERENCED IN BLM FIELD NOTES 1980 VOL. 43 PAGE 16883, REFERENCED IN BLM FIELD NOTES
VOL. 51 PAGES 19265-66, REFERENCED IN BLM FIELD NOTES VOL. 57 PAGE 22573

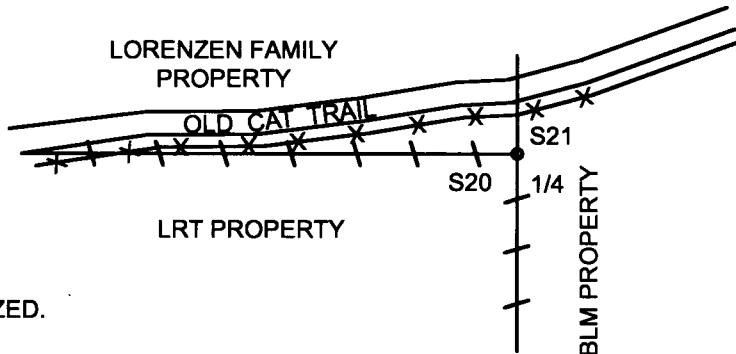
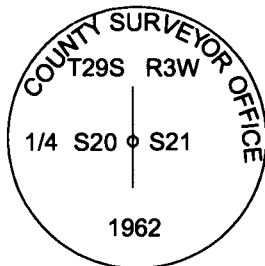
DOUGLAS COUNTY
SURVEYOR

ACCESSORIES FOUND: (CONDITION AND SOURCE)

28" FIR BEARS N84 1/2°E 21.4 FT. WITH HEALED BLAZE, CHECKED WITH HAND COMPASS AND EDM DISTANCE
(RECORD N83°E 21.8 FT FROM BLM RE SURVEY PG 22573) HEALED FACE AND TAG
13" FIR BEARS S67°W 5 FT. WITH HEALED FACE AND TAG (RECORD S65°W 5.3 FT.) FROM BLM RESURVEY PG 22573)

SKETCH:
(NOT TO SCALE)

MONUMENT DETAIL:



- PROPERTY LINES BLAZED. PAINTED AND TAGGED
- EXISTING FENCE LINE

MONUMENT:

FOUND 1962 BRYON COUNTY SURVEYORS OFFICE CAP SET IN C.S. 52/126 FILED IN DOUGLAS COUNTY SURVEYORS OFFICE.

NEW ACCESSORIES:

10" WHITE FIR BEARS S15 1/4°E 16.9 FT. WE SCRIBE T29S R3W 1/4 S21 BT AND TAG TREE
21" CEDAR BEARS S24 1/4°W 37.6 FT. WE SCRIBE T29S R3W 1/4 S20 BT AND TAG TREE

LOCATION & COMMENTS:

FOUND BRYON 1962 BCIP 1.0 FT. ABOVE GROUND
MONUMENT LIES IN NORTH FACING CUT BANK
APROX 15 FT SOUTH FROM OLD CAT TRAIL, WITH
FENCE LINE ON SOUTH EDGE OF OLD CAT TRAIL.
THIS CORNER WAS TIED INTO DURING THE COURSE
OF A SURVEY TRAVERSE FROM THE EAST 1/4 TO
THE CENTER 1/4 OF SECTION 20.

BEARING BASIS: TRAVERSE ROTATED TO SOLAR
FROM BLM PLAT 6634 E1/4 TO C1/4
FIRM/AGENCY: LONE ROCK TIMBER MANAGEMENT CO.
ADDRESS: P.O. BOX 1127
ROSEBURG, OR 97470
PARTY CHIEF: KEN W. HOFFINE
NOTES: GARY ANGIOLET
WITNESS: JAKE FURGERSON

REGISTERED
PROFESSIONAL
LAND SURVEYOR

Ken W. Hoffine

OREGON
JULY 16, 1987
KEN W. HOFFINE
PLS 2291

C.S. FILE 65/104-39

EXPIRES 6-30-21