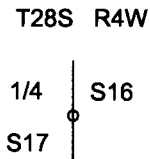


OREGON CORNER RESTORATION FORM

SECTION 16 TOWNSHIP 28 S. RANGE 4 W.
COUNTY DOUGLAS DATE 2/5/2020 TRACT BMH 7208
POINT IDENTIFIER 300440

CORNER DESIGNATION:



- CONDITION REPORT ONLY
- NOT FOUND
- RENEWED
- UNRECORDED
- SURVEYED IN
- REFERENCED OUT

FILED
Date: 3-10-2020 By: X
This survey consists of:
Map: _____
Narrative: _____
Corner Rpt: CS 65/104-37

PREVIOUS RENEWALS/SURVEYS, ETC:
SET IN 1963 BY BRYON IN C.S. FILE 53/32

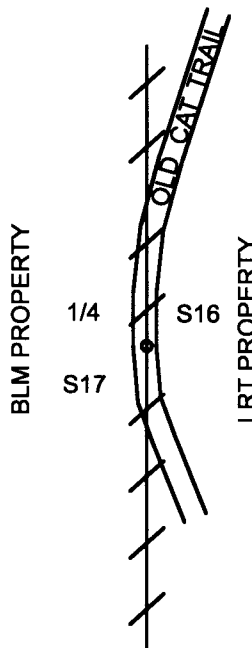
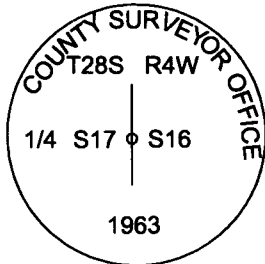
DOUGLAS COUNTY SURVEYOR

ACCESSORIES FOUND: (CONDITION AND SOURCE)

18" CEDAR BEARS S46°W 41.8 FT. CHECKED WITH HAND COMPASS (16° DECLINATION) AND EDM DISTANCE
(RECORD S46°W 43.0 FT FROM CS 53/32) HEALED FACE AND TAG

SKETCH:
(NOT TO SCALE)

MONUMENT DETAIL:



MONUMENT:

FOUND 1963 BRYON COUNTY SURVEYORS OFFICE CAP SET IN C.S. 53/32 FILED IN DOUGLAS COUNTY SURVEYORS OFFICE.

NEW ACCESSORIES:

- 9" CEDAR BEARS N51 3/4°W 14.2 FT. WE SCRIBE T28S R4W 1/4 S17 BT AND TAG TREE
- 10" DOUG FIR BEARS S62 1/2°E 14.15 FT. WE SCRIBE T28S R4W 1/4 S16 BT AND TAG TREE
- 13" DOUG FIR BEARS N62 3/4°E 26.4 FT. WE SCRIBE T28S R4W 1/4 S16 BT AND TAG TREE

LOCATION & COMMENTS:

FOUND BRYON 1963 BCIP 1.0 FT. ABOVE GROUND AND LEANING TO THE SOUTHWEST. WE PLUMB MONUMENT. MONUMENT LIES IN SOUTH FACING SLOPE IN OLD CAT TRAIL.

BEARING BASIS: TRAVERSE ROTATED TO GPS
BEARING ORCS. STATE PLAN
CANYONVILLE, GRANTS PASS
FIRM/AGENCY: LONE ROCK TIMBER MANAGEMENT CO.
ADDRESS: P.O. BOX 1127
ROSEBURG, OR 97470
PARTY CHIEF: KEN W. HOFFINE
NOTES: GARY ANGIOLET
WITNESS: JAKE FURGERSON

REGISTERED
PROFESSIONAL
LAND SURVEYOR

Ken W Hoffine
OREGON
JULY 16, 1987
KEN W. HOFFINE
PLS 2291

C.S. FILE 65/104-37

EXPIRES 6-30-21