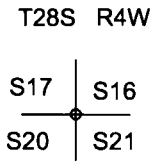


OREGON CORNER RESTORATION FORM

SECTION 16 TOWNSHIP 28 S. RANGE 4 W.
 COUNTY DOUGLAS DATE 2/5/2020 TRACT BMH 7208
 POINT IDENTIFIER 300400

CORNER DESIGNATION:



- CONDITION REPORT ONLY
- NOT FOUND
- RENEWED
- UNRECORDED
- SURVEYED IN
- REFERENCED OUT

FILED

Date: 2-25-2020 By: X
 This survey consists of:
 Map: _____
 Narrative: _____
 Corner Rpt: CS 65/104-35

PREVIOUS RENEWALS/SURVEYS, ETC:

SET IN 1957 BY BRYON IN C.S. FILE 47/180, RESET IN 1958 BLM FIELD NOTES VOL. 29 PGS. 12252-3, K. DeGROOT
 1997 MAP M124-53, AND C. SWEEDEN 1999 MAP M133-53

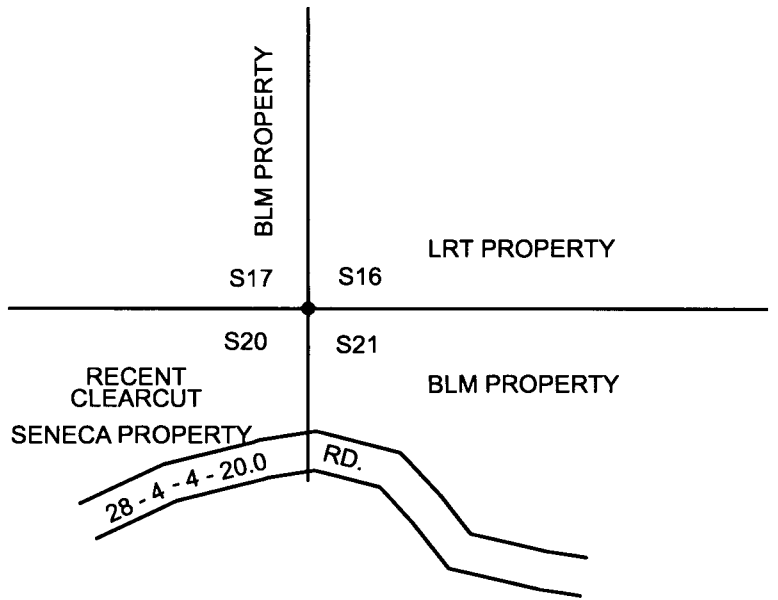
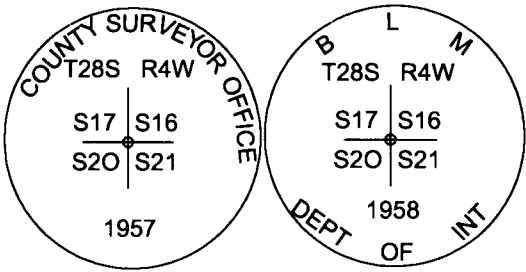
**DOUGLAS COUNTY
SURVEYOR**

ACCESSORIES FOUND: (CONDITION AND SOURCE)

29" CEDAR BEARS N54 1/4°E 8.2 FT. (RECORD N54°E 8.25 FT FROM CS 53/32) HEALED FACE AND TAG
25" DOUG FIR BEARS S34 1/4°W 18.45 FT. (RECORD S35°W 19.8 FT FROM BLM FIELD NOTES VOL. 29 PGS. 12252-3) HEALED FACE AND TAG

SKETCH:
(NOT TO SCALE)

MONUMENT DETAIL:



MONUMENT:

FOUND 1958 BLM BCIP WITH BRYON 1957 COUNTY SURVEYORS OFFICE CAP ALONGSIDE.

NEW ACCESSORIES:

27" CEDAR BEARS N30 3/4°W 24.2 FT. WE SCRIBE T28S R4W S17 BT AND TAG TREE
18" DOUG FIR BEARS S29 3/4°E 36.1 FT. WE SCRIBE T28S R4W S21 BT AND TAG TREE

LOCATION & COMMENTS:

FOUND BLM BCIP WITH COUNTY CAP ALONGSIDE
0.7 FT. ABOVE GROUND, WITH METAL U-POST
APPROX. 1.0 FT. SOUTH OF MONUMENTS. MONUMENT
LIES AT NORTHEAST EDGE OF RECENT CLEARCUT
AND APPROX. 100 FT. NORTH OF 28-4-20.0 ROAD.

BEARING BASIS: TRAVERSE ROTATED TO
GPS BEARING
FIRM/AGENCY: LONE ROCK TIMBER MANAGEMENT CO.
ADDRESS: P.O. BOX 1127
ROSEBURG, OR 97470
PARTY CHIEF: KEN W. HOFFINE
NOTES: GARY ANGIOLET
WITNESS: JAKE FURGERSON

REGISTERED
PROFESSIONAL
LAND SURVEYOR

Ken W Hoffine
 OREGON
 JULY 16, 1987
KEN W. HOFFINE
 PLS 2291

C.S. FILE 65/104-35

EXPIRES 6-30-21