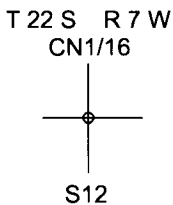


# OREGON CORNER RESTORATION FORM

SECTION 12 TOWNSHIP 22 S. RANGE 7 W  
COUNTY DOUGLAS DATE 6/19/2019 TRACT J22-7-12  
POINT IDENTIFIER 640560

**CORNER DESIGNATION:**



- CONDITION REPORT ONLY
- NOT FOUND
- RENEWED
- UNRECORDED
- SURVEYED IN
- REFERENCED OUT

**FILED**  
Date: 10/22/2019 By: X  
This survey consists of:  
Map: \_\_\_\_\_  
Narrative: \_\_\_\_\_  
Corner Rpt: C565/104-19

**PREVIOUS RENEWALS/SURVEYS, ETC.:**

SET IN HAINES 1956 SURVEY MAP M3-22

**DOUGLAS COUNTY  
SURVEYOR**

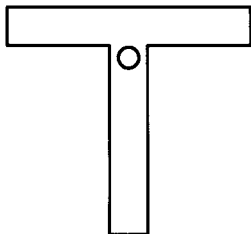
**ACCESSORIES FOUND: (CONDITION AND SOURCE)**

ROTTEN FIR STUB BEARS S24 3/4°W 16.5 FT. (RECORD S24°W 16.9 FT.)

ROTTEN FIR STUB BEARS N8 1/2°E 21.3 FT. (RECORD N8°45'E 21.2 FT.)

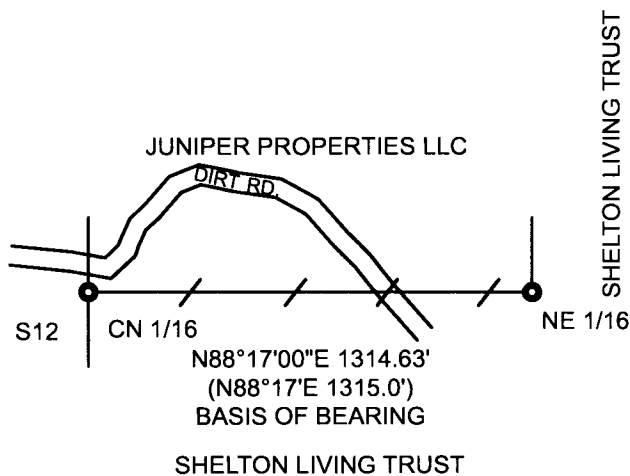
**SKETCH:  
(NOT TO SCALE)**

**MONUMENT DETAIL:**



**LEGEND:**

- LINES BLAZED, PAINTED, TAGGED, & U-POSTED
- FND HAINES T-IRON PER MAP M3-22
- RECORD FROM 1963 HAINES MAP M3-22



**MONUMENT:**

FOUND 1956 HAINES T-IRON PER MAP M3-22

**NEW ACCESSORIES:**

13" DOUG FIR BEARS N4 1/2°W 16.7 FT. WE SCRIBE CN 1/16 S12 BT AND TAG TREE

16" DOUG FIR BEARS S19 3/4°W 11.45 FT. WE SCRIBE CN 1/16 S12 BT AND TAG TREE

**BEARING BASIS:** ASSUMED FROM HAINES

MAP M3-22

**FIRM/AGENCY:** LONE ROCK TIMBER MANAGEMENT CO.

**ADDRESS:** P.O. BOX 1127

ROSEBURG, OR 97470

**PARTY CHIEF:** KEN W. HOFFINE

**NOTES:** GARY ANGIOLET

**WITNESS:** DAN SAILY

**LOCATION & COMMENTS:**

WE FIND HAINES T-IRON FOR CN 1/16 CORNER  
0.7 FEET ABOVE GROUND LEVEL. MONUMENT  
LIES APPROX. FIFTY FEET SOUTH OF NEWLY  
OPENED UP OLD SKID ROAD. WE RAN A RANDOM  
LOOP TRAVERSE FROM THE CN 1/16 TO THE  
NE 1/16 AND BACK TO THE CN 1/16. AFTER CHECKING  
CLOSURE WE ROTATE OUR TRAVERSE TO HAINES  
RECORD AND BLAZE, PAINT AND TAG PROPERTY  
LINE AS SHOWN OF SKETCH. WE PUT U-POST  
APPROX. 1.0 FEET NORTH OF MONUMENT.

REGISTERED  
PROFESSIONAL  
LAND SURVEYOR

OREGON  
JULY 16, 1987  
KEN W. HOFFINE  
PLS 2291

C.S. FILE 65/104-19

EXPIRES 6-30-21