

# OREGON CORNER RESTORATION FORM

SECTION 8 TOWNSHIP 23 S. RANGE 4 W  
 COUNTY DOUGLAS DATE 6/5/2019 TRACT J23-4-8 ADAMS CREEK  
 POINT IDENTIFIER 220520

**CORNER DESIGNATION:**

T 23 S R 4 W  
 SW 1/16  
 S8

- CONDITION REPORT ONLY
- NOT FOUND
- RENEWED
- UNRECORDED
- SURVEYED IN
- REFERENCED OUT

**FILED**

Date: 10/22/2019 By: JC  
 This survey consists of:  
 Map: \_\_\_\_\_  
 Narrative: \_\_\_\_\_  
 Corner Rpt: CS 65/104-18

**PREVIOUS RENEWALS/SURVEYS, ETC:**

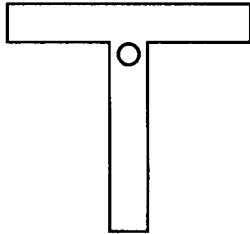
SET IN HAINES 1963 SURVEY MAP M26-38

**DOUGLAS COUNTY  
SURVEYOR**

**ACCESSORIES FOUND: (CONDITION AND SOURCE)**

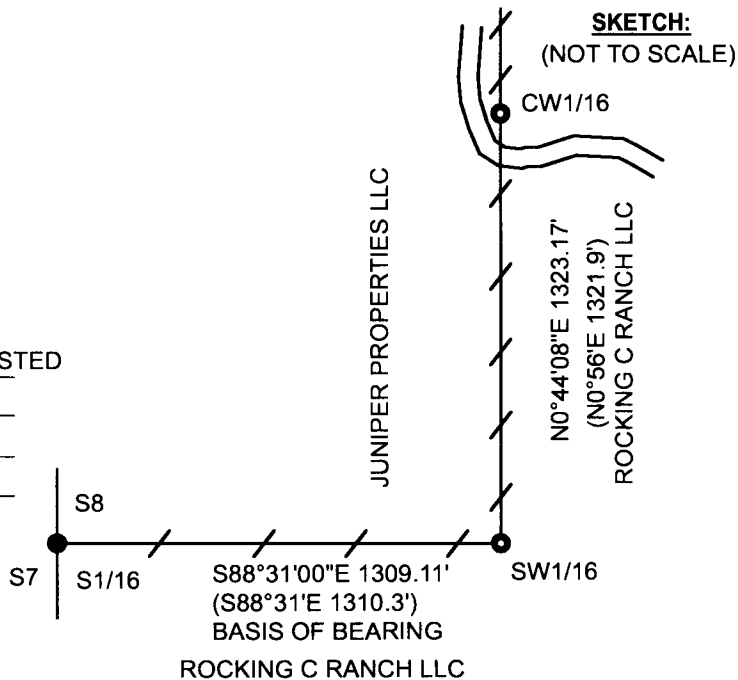
23" CEDAR BEARS S44°W 14.6 FT. (RECORD S43°W 13.0 FT.) HEALED FACE

**MONUMENT DETAIL:**



**LEGEND:**

- LINES BLAZED, PAINTED, TAGGED, & U-POSTED
- FND HAINES T-IRON PER MAP M26-38
- FND BLM BRASS CAP
- ( ) RECORD FROM 1963 HAINES MAP M 26-38



**MONUMENT:**

FOUND 1963 HAINES T-IRON PER MAP M26-38

**NEW ACCESSORIES:**

18" DOUG FIR BEARS S60 3/4°E 10.6 FT. WE SCRIBE SW 1/16 S8 BT AND TAG TREE

**LOCATION & COMMENTS:**

WE FIND HAINES T-IRON FOR SW 1/16 CORNER BENT, (WE STRAIGHTEN) AT TOP EDGE OF OLD SKID ROAD CUT BANK. T-IRON LIES ON STEEP EAST FACING SLOPE. FEB. 2019 SNOW STORM HAS KNOCKED DOWN TREES AROUND CORNER. WE RAN A RANDOM TRAVERSE FROM GPS CONTROL POINTS NEAR THE S 1/16 CORNER AND THE NW 1/16 CORNERS TO THEN BLAZE, PAINT, AND TAG PROPERTY LINES AS SHOWN ON SKETCH.

**BEARING BASIS:** ASSUMED FROM HAINES  
 MAP M26-38  
**FIRM/AGENCY:** LONE ROCK TIMBER MANAGEMENT CO.  
**ADDRESS:** P.O. BOX 1127  
 ROSEBURG, OR 97470  
**PARTY CHIEF:** KEN W. HOFFINE  
**NOTES:** GARY ANGIOLET  
**WITNESS:** KATIE NICHOLS

REGISTERED  
**PROFESSIONAL  
 LAND SURVEYOR**

*Ken W. Hoffine*  
 OREGON  
 JULY 16, 1987  
**KEN W. HOFFINE**  
 PLS 2291

C.S. FILE 65/104-18

EXPIRES 6-30-21