

**BOUNDARY SURVEY IN
SOUTHEAST 1/4 OF SECTION 12, T21S, R7W, W.M.
DOUGLAS COUNTY, OREGON**

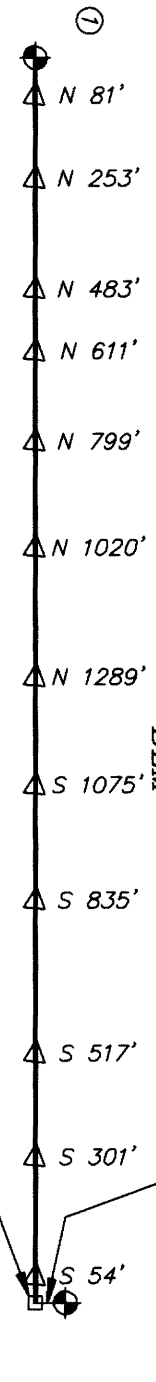
① 1/4 CORNER 12, T21S, R7W AND 7 T21S R6W (700540) JULY 25, 2019

FOUND: 1" BRASS DISK ON 1" X 1"- "T" IRON PER CS51/67-2

- 16" FIR, N87E, 18.3' TO CENTER DOUGLAS COUNTY BEARING TREE (REC. N88E, 18.3')
- 20" FIR, S46E, 43.6' TO CENTER M160-12 BEARING TREE (REC. S47E, 43.6')
- 16" FIR, S21W, 45.8' TO CENTER M160-12 BEARING TREE (REC.=S23W, 45.8')
- 28" FIR, N19W, 16.6' TO CENTER DOUGLAS COUNTY BEARING TREE (REC. N16W, 17.4')

5 FOOT METAL POST ALONGSIDE CORNER

—BASIS OF BEARING—
[NORTH 40.00 CHAINS—1883 GLO SURVEY]
NORTH 2589.48'



REGISTERED
PROFESSIONAL
LAND SURVEYOR

Daniel W. Baker
OREGON
JULY 16, 1982
DANIEL W. BAKER
1978

BASIS OF BEARING: SOUTH 1/2 OF EAST LINE
OF SECTION 12 PER 1883 GLO SURVEY

EXPIRES 12/31/19

- ① FOUND — GOVERNMENT CORNER (AS NOTED)
- BLAZED AND PAINTED PROPERTY LINE
- RECORD DATA — 1883 GLO SURVEY
- △ — 5 FOOT METAL POSTS SET ON PROPERTY LINE (DISTANCES AND CARDINAL DIRECTION ARE FROM THE NEAREST CORNER I.E. = SOUTH 123')

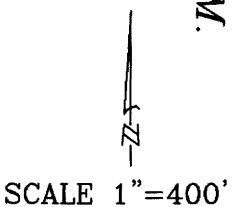
② WITNESS CORNER TO SECTION CORNER 12 & 13 T21S R7W AND 7 & 18, T21S, R6W, WM (700500)

FOUND: 2 1/2" DOUGLAS COUNTY BRASS CAP "1964"

- 16" ALDER, N16W, 8.0' TO CENTER M151-15 BEARING TREE (RECORD=N19W, 8.0')
- 12" HEMLOCK, S69E, 56.8' TO CENTER M151-15 BEARING TREE (RECORD=S69E, 56.9')
- 44" RED CEDAR, S22W, 125.6' TO CENTER DOUGLAS COUNTY BEARING TREE (RECORD=S22W, 125.6')
- 35" HEMLOCK, N14W, 75.0' TO CENTER—DOUGLAS COUNTY BEARING TREE (RECORD=N14W, 75.0')

ASSESSOR'S MAP 21-07-00 TAX LOT 1300

—NARRATIVE—



THIS SURVEY WAS MADE IN MAY AND JULY, 2019 FOR SENECA JONES TIMBER COMPANY IN THE SOUTHEAST 1/4 OF SECTION 12, TOWNSHIP 21 SOUTH, RANGE 7 WEST, WILLAMETTE MERIDIAN. THE PURPOSE OF THIS SURVEY WAS TO LOCATE AND MARK IN THE FIELD, THE SOUTH 1/2 OF THE EAST LINE OF SECTION 12 BETWEEN A FOUND MONUMENT MARKING THE EAST 1/4 CORNER OF SECTION 12 PER CS 51/67 AND THE POSITION OF THE SOUTHEAST SECTION CORNER OF SECTION 12, REFERENCE BY DOUGLAS COUNTY BRASS CAP, 23.00 FEET EAST OF CORNER. THE BASIS OF BEARING FOR THIS SURVEY WAS THE SOUTH 1/2 OF THE EAST LINE OF SECTION 12, TOWNSHIP 21 SOUTH, RANGE 7 WEST, WILLAMETTE MERIDIAN BETWEEN THE FOUND EAST 1/4 CORNER OF SECTION 8 AND THE SOUTHEAST SECTION CORNER POSITION. A RANDOM TRAVERSE WAS RUN BETWEEN THE FOUND EAST 1/4 CORNER OF SECTION 12 AND THE SOUTHEAST SECTION CORNER POSITION OF SECTION 12, WITH AN ERROR OF CLOSURE OF 1' IN 40,000' BEFORE ANGULAR ADJUSTMENT. BOTH THE FOUND EAST 1/4 CORNER OF SECTION 12 AND THE SOUTHEAST SECTION CORNER OF SECTION 12 WERE MONUMENTED WITH "T" IRONS SET IN CS51/67. THE "T" IRON AT THE SOUTHEAST SECTION CORNER WAS IN THE CREEK AND HAD BEEN WASHED AWAY AND DOUGLAS COUNTY SURVEYOR'S OFFICE SET A WITNESS CORNER 23 FEET EAST OF CORNER POSITION. THE TRUE PROPERTY LINE WAS MARKED BY BLAZING TREES ON EITHER SIDE OF THE TRUE PROPERTY LINE (BLAZES PAINTED RED) AND BY SETTING 5 FOOT METAL POSTS AT RANDOM INTERVALS ALONG THE TRUE PROPERTY LINES AS SHOWN. NO NEW CORNERS WERE ESTABLISHED IN THIS SURVEY.

FILED
Date: 10-15-19 By: BR
This survey consists of:
Map: C.S. 05/103-011
Narrative: _____
Corner Rpt: _____
DOUGLAS COUNTY
SURVEYOR

**BOUNDARY SURVEY IN
SOUTHEAST 1/4 OF SECTION 12, T21S, R7W, W.M.
DOUGLAS COUNTY, OREGON**

CLIENT:	SENECA JONES TIMBER COMPANY	
DRAWN BY:	DWB	BAKER AND ASSOCIATES, SURVEYORS
DATE:	7/25/19	1347 MARKET STREET
FILE:	SENECA-210712	SPRINGFIELD, OREGON (541) 343-7243

C.S. FILE 05/103-011