

OREGON CORNER RESTORATION FORM

SECTION 35 TOWNSHIP 25 S. RANGE 5W
COUNTY DOUGLAS DATE 2/1/2019 TRACT WAHL
POINT IDENTIFIER 520160

CORNER DESIGNATION:

T 25 S R 5 W
NW 1/16
S35

CONDITION REPORT ONLY
 NOT FOUND
 RENEWED
 UNRECORDED
 SURVEYED IN
 REFERENCED OUT

FILED

Date: 4/18/2019 By: JC
This survey consists of:

Map: _____

Narrative: _____
Corner Rpt: CS 65/102-28

PREVIOUS RENEWALS/SURVEYS, ETC:

NW1/16 CORNER WAS SET BY BAKER IN MAP M119-75,

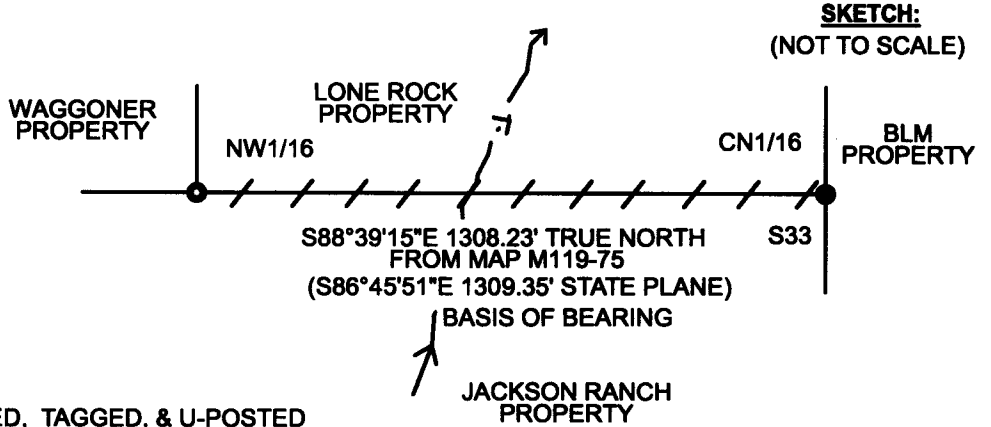
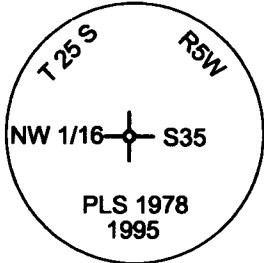
**DOUGLAS COUNTY
SURVEYOR**

ACCESSORIES FOUND: (CONDITION AND SOURCE)

36" CEDAR STUMP BEARS N7 1/2°W 31.1 FT. (RECORD N6°W 31.4 FT.) HEALED FACE AND TAG

16" DOUG FIR BEARS N72°E 18.6 FT. (RECORD N70°E 18.9 FT.) HEALED FACE AND TAG

MONUMENT DETAIL:



LEGEND:

- LINES BLAZED, PAINTED, TAGGED, & U-POSTED
- FND 1963 BLM BRASS CAP
- FND BAKER 1995 BRASS CAP PER MAP M119-75
- RECORD FROM MAP M119-75

MONUMENT:

FOUND 1995 BAKER 1 3/4" IRON PIPE WITH 2 1/2" BRASS CAP PER M119-75

NEW ACCESSORIES:

14" DOUG FIR BEARS S24°W 37.2 FT. WE SCRIBE NW1/16 S35 BT AND TAG TREE

LOCATION & COMMENTS:

WE RAN A RANDOM DIAMOND CLOSED LOOPED TRAVERSE BEGINNING AT THE NW 1/16 CORNER WE TRAVERSE EASTERLY TO THE CN 1/16 CORNER. WE CALCULATED OFFSETS AND BLAZED, PAINTED, TAGGED, AND INSTALLED U-POSTS ON TRUE LINE. NW 1/16 CORNER LIES ON STEEP SOUTHEAST FACING SLOPE WITH RECENT LOGGING TO WEST AND SOUTH OF CORNER. FOUND METAL FENCE POST APPROX. 1.0 FEET NORTH OF CORNER.

BEARING BASIS: FROM BAKER MAP M119-75
WITH CONVERGENCE ANGLE
FIRM/AGENCY: LONE ROCK TIMBER MANAGEMENT CO.
ADDRESS: P.O. BOX 1127
ROSEBURG, OR 97470
PARTY CHIEF: KEN W. HOFFINE
NOTES: GARY ANGIOLET
WITNESS: IGNACIO ROMAN

REGISTERED
PROFESSIONAL
LAND SURVEYOR

Ken W. Hoffine
OREGON
JULY 16, 1987
KEN W. HOFFINE
PLS 2291

C.S. FILE 65/102-28

EXPIRES 6-30-19