

OREGON CORNER RESTORATION FORM

SECTION 21 TOWNSHIP 25 S. RANGE 4W
 COUNTY DOUGLAS DATE 1/10/2019 TRACT KASTOR ROCK PIT
 POINT IDENTIFIER 400300

CORNER DESIGNATION:

T 25 S R 4 W

S21	S22
S28	S27

CONDITION REPORT ONLY
 NOT FOUND
 RENEWED
 UNRECORDED
 SURVEYED IN
 REFERENCED OUT

FILED
 Date: 3-12-2019 By: X
 This survey consists of:
 Map: _____
 Narrative: _____
 Corner Rpt: CS 65/102-4

PREVIOUS RENEWALS/SURVEYS, ETC:

HOFFINE 2005 CORNER RENEWAL CS 65/54-40 A-C

**DOUGLAS COUNTY
SURVEYOR**

ACCESSORIES FOUND: (CONDITION AND SOURCE)

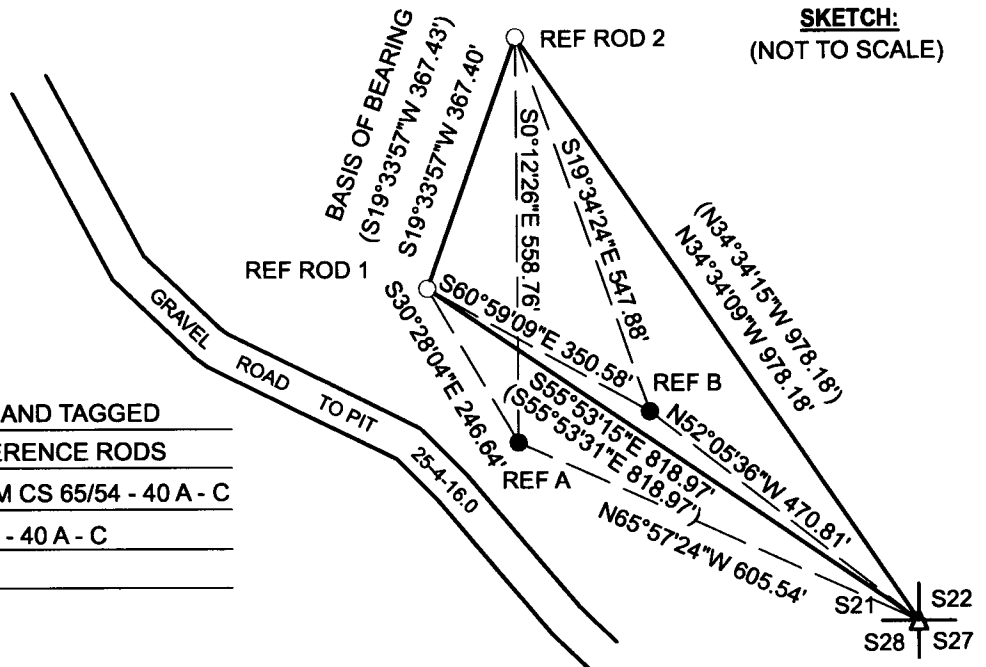
FOUND IRON ROD WITH YELLOW PLASTIC CAP PER CORNER RENEWAL CS 65/54-40 A-C REF ROD 1

FOUND IRON ROD WITH YELLOW PLASTIC CAP PER CORNER RENEWAL CS 65/54-40 A-C REF ROD 2

MONUMENT DETAIL:

PHYSICAL CORNER REMOVED
IN ACTIVE ROCK PIT OPERATION

- LEGEND:**
- LINES BLAZED, PAINTED AND TAGGED
 - SET NEW 5/8" X 40" REFERENCE RODS
 - REFERENCE RODS FROM CS 65/54 - 40 A - C
 - RECORD FROM CS 65/54 - 40 A - C



MONUMENT:

1957 BLM BRASS CAP

NEW ACCESSORIES:

REF A SET 5/8" X 40" IRON ROD WITH ORANGE PLASTIC CAP BEARS S30°28'04"E 246.64' FROM REFERENCE ROD 1 AND S0°12'26"E 558.76' FROM REFERENCE ROD 2.

REF B SET 5/8" X 40" IRON ROD WITH ORANGE PLASTIC CAP BEARS S60°59'09"E 350.58' FROM REFERENCE ROD 1 AND S19°34'24"E 547.88' FROM REFERENCE ROD 2.

LOCATION & COMMENTS:

WE RAN A RANDOM LOOPED TRAVERSE AROUND ROCK PIT EXPANSION AREA. WE STARTED OUR TRAVERSE AT THE EXISTING REFERENCE RODS 1 & 2. WE THEN SET TWO NEW REFERENCE RODS A & B FOR THE SECTION CORNER OF SECTIONS 21, 22, 27, & 28 T. 25 S. R. 5 W.. THE PHYSICAL MONUMENT HAS BEEN REMOVED BY LONE ROCK, TO BE REPLACED AT END OF ACTIVE QUARRY OPERATIONS.

BEARING BASIS: FROM CORNER RENEWAL CS 65/54 - 40 A - C
FIRM/AGENCY: LONE ROCK TIMBER MANAGEMENT CO.
ADDRESS: P.O. BOX 1127 ROSEBURG, OR 97470
PARTY CHIEF: KEN W. HOFFINE
NOTES: GARY ANGIOLET
WITNESS: IGNACIO ROMAN

REGISTERED
PROFESSIONAL
LAND SURVEYOR

Ken W Hoffine

OREGON
JULY 16, 1987
KEN W. HOFFINE
PLS 2291

C.S. FILE 65/102-4

EXPIRES 6-30-19