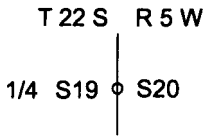


OREGON CORNER RESTORATION FORM

SECTION 20 TOWNSHIP 22 S. RANGE 5W
COUNTY DOUGLAS DATE 9/12/2018 TRACT BALDY
POINT IDENTIFIER 200340

CORNER DESIGNATION:



- CONDITION REPORT ONLY
- NOT FOUND
- RENEWED
- UNRECORDED
- SURVEYED IN
- REFERENCED OUT

FILED
Date: 9/24/18 By: [Signature]
This survey consists of:
Map: _____
Narrative: _____
Corner Rpt: 65/101-61

PREVIOUS RENEWALS/SURVEYS, ETC:

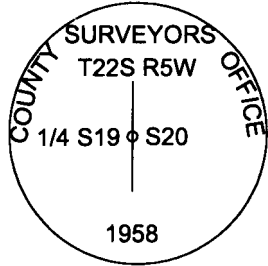
1958 COUNTY CORNER PER CS FILE 49/59, 1965 COUNTY RENEWAL CS FILE 53/101, 1988 DEAN RENEWAL CS FILE 63/69, 2004 HOFFINE MAP M144-38, 2005 & 2007 EDWARDS MAPS M149-22 & M152-16.

DOUGLAS COUNTY SURVEYOR

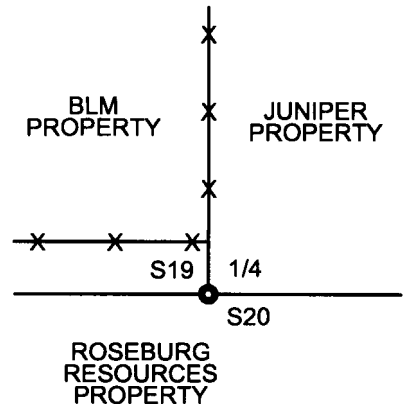
ACCESSORIES FOUND: (CONDITION AND SOURCE)

24" DOUG FIR BEARS S45°20'E 25.3 FT. AS PER CS FILE 63/69 HEALED FACE AND TAG
DOWN 24" DOUG FIR BEARS S56°24'W 24.5 FT. AS PER CS FILE 63/69

MONUMENT DETAIL:



SKETCH:
(NOT TO SCALE)



LEGEND:

- FOUND 1958 COUNTY BCIP
- x—x—x— EXISTING FENCE LINES

MONUMENT:

FOUND 1958 COUNTY BCIP AS PER CS FILE 49/59

NEW ACCESSORIES:

18" DOUGLAS FIR BEARS N61°W 22.6 FEET WE SCRIBE 1/4 S19 BT AND TAG TREE

BEARING BASIS: RECORD BEARING FROM CS FILE 63/69 HAND COMPASS

LOCATION & COMMENTS:

IN THE COURSE OF VISITING THE QUARTER CORNER BETWEEN SECTIONS 19 & 20 WE FIND ONLY ONE STANDING BEARING TREE WITH THE BEARING TREE AT RECORD BEARING OF S56°W HAVING BEEN UPROOTED AND NOW LAYING ALONG SIDE CORNER. THERE IS A FENCE CORNER APPROX. 13 FEET NORTH OF CORNER. FENCE LINES RUN NORTH AND EAST FROM FENCE CORNER. THERE IS AN OLD U-POST ALONG SIDE OF CORNER MONUMENT AND A NEWER U-POST APPROX. TWO FEET WEST OF CORNER MONUMENT.

FIRM/AGENCY: LONE ROCK TIMBER MANAGEMENT CO.
ADDRESS: P.O. BOX 1127 ROSEBURG, OR 97470
PARTY CHIEF: KEN W. HOFFINE
NOTES: GARY ANGIOLET
WITNESS: IGNACIO ROMAN

REGISTERED PROFESSIONAL LAND SURVEYOR

Ken W Hoffine
OREGON JULY 16, 1987
KEN W. HOFFINE
PLS 2291

C.S. FILE 65/101-61

EXPIRES 6-30-19