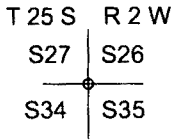


OREGON CORNER RESTORATION FORM

SECTION 34 TOWNSHIP 25 S. RANGE 2 W
 COUNTY DOUGLAS DATE 6/11/2017 TRACT F25-2-34
 POINT IDENTIFIER 500200

CORNER DESIGNATION:



- CONDITION REPORT ONLY
- NOT FOUND
- RENEWED
- UNRECORDED
- SURVEYED IN
- REFERENCED OUT

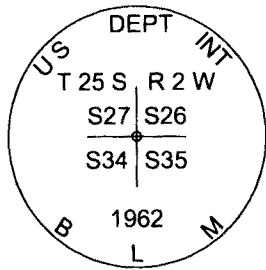
PREVIOUS RENEWALS/SURVEYS, ETC.:

LECKLIDER 1960 MAP M19-40, BLM 1962 FIELD NOTES VOL. 32 PAGES 13220-1, BLM 1975 FIELD NOTES VOL. 36 PAGES 15114-5,

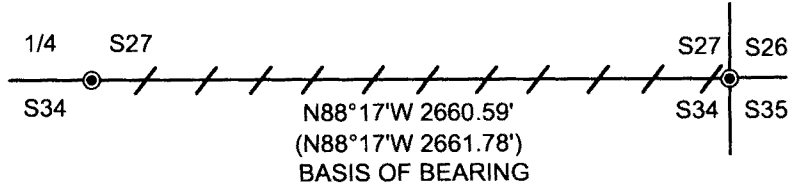
ACCESSORIES FOUND: (CONDITION AND SOURCE)

20" HEMLOCK BEARS N44°E 44.0 FT. (RECORD FROM 1962 BLM RENEWAL N43 1/2°E 43.89 FT.)
HEALED FACE AND BLM TAG
24" HEMLOCK BEARS S60 1/2°E 45.35 FT. (RECORD FROM 1962 BLM RENEWAL S60 1/2°E 47.52 FT.)
HEALED FACE AND BLM TAG

MONUMENT DETAIL:



SKETCH:
(NOT TO SCALE)



LEGEND:

- LINES BLAZED, PAINTED AND TAGGED
- FND 1962 BLM BRASS CAP
- 1962 BLM PLAT 6976

MONUMENT:

FOUND 1962 BUREAU OF LAND MANAGEMENT BRASS CAP

NEW ACCESSORIES:

18" HEMLOCK BEARS N1 1/4°E 11.0 FT. WE SCRIBE T25S R2W S26 BT AND TAG TREE
14" DOUGLAS FIR BEARS S48 3/4°W 38.6 FT. WE SCRIBE T25S R2W S34 BT AND TAG TREE

BEARING BASIS: FROM BLM PLAT 6976

LOCATION & COMMENTS:

WE RAN A RANDOM LOOP TRANSIT TRAVERSE BEGINNING AT THE NORTHEAST CORNER OF SECTION 34 ALONG THE NORTH LINE OF SECTION 34, TO THE NORTH 1/4 CORNER CORNER OF SECTION 34, WE MARKED PROPERTY BOUNDARIES ON TRUE LINE BETWEEN CORNERS. CORNER LIES ON STEEP NORTH FACING SLOPE AND IS APPROX. 0.2 FEET ABOVE GROUND LEVEL.

FIRM/AGENCY: LONE ROCK TIMBER MANAGEMENT CO.
ADDRESS: P.O. BOX 1127
ROSEBURG, OR 97470
PARTY CHIEF: KEN W. HOFFINE
NOTES: GARY ANGIOLET
WITNESS: IGNACIO ROMAN

FILED

Date: 7-24-2018 By: JC
 This survey consists of:
 Map: _____
 Narrative: _____
 Corner Rpt: CS 65/101-53

DOUGLAS COUNTY SURVEYOR

C.S. FILE 65/101-53

REGISTERED
PROFESSIONAL
LAND SURVEYOR

Ken W. Hoffine
OREGON
JULY 16, 1987
KEN W. HOFFINE
PLS 2291

EXPIRES 6-30-19