

OREGON CORNER RESTORATION FORM

SECTION 34 TOWNSHIP 25 S. RANGE 2 W
COUNTY DOUGLAS DATE 6/11/2017 TRACT F25-2-34
POINT IDENTIFIER 440200

CORNER DESIGNATION:

T 25 S R 2 W
S27 1/4
○
S34

- CONDITION REPORT ONLY
- NOT FOUND
- RENEWED
- UNRECORDED
- SURVEYED IN
- REFERENCED OUT

PREVIOUS RENEWALS/SURVEYS, ETC:

LECKLIDER 1960 MAP M19-40, BLM 1962 FIELD NOTES VOL. 32 PAGES 13220-1, BLM 1975 FIELD NOTES VOL. 36 PAGES 15114-5, BLM 2000 FIELD NOTES VOL. 53 PAGE 20458

ACCESSORIES FOUND: (CONDITION AND SOURCE)

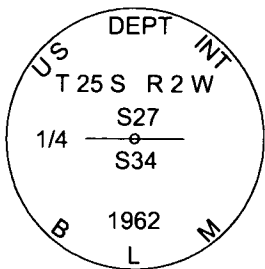
24" HEMLOCK BEARS N48°W 60.9 FT. (RECORD FROM 2000 BLM RENEWAL N48°E 61.71 FT.)

HEALED FACE AND BLM TAG

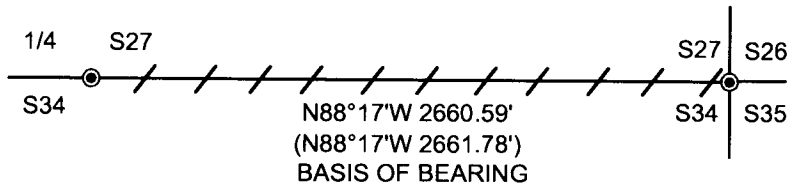
34" CEDAR BEARS S74 3/4°W 9.6 FT. (RECORD FROM 2000 BLM RENEWAL S75°W 9.57 FT.)

HEALED FACE AND BLM TAG

MONUMENT DETAIL:



SKETCH:
(NOT TO SCALE)



LEGEND:

- LINES BLAZED, PAINTED AND TAGGED
- FND 1962 BLM BRASS CAP
- 1962 BLM PLAT 6976

MONUMENT:

FOUND 1962 BUREAU OF LAND MANAGEMENT BRASS CAP

NEW ACCESSORIES:

11" CEDAR BEARS N55 1/2°E 19.4 FT. WE SCRIBE T25S R2W 1/4 S27 BT AND TAG TREE

11" DOUGLAS FIR BEARS S77 1/2°E 51.4 FT. WE SCRIBE T25S R2W 1/4 S34 BT AND TAG TREE

BEARING BASIS: FROM BLM PLAT 6976

LOCATION & COMMENTS:

WE RAN A RANDOM LOOP TRANSIT TRAVERSE BEGINNING AT THE NORTHEAST CORNER OF SECTION 34 ALONG THE NORTH LINE OF SECTION 34, TO THE NORTH 1/4 CORNER CORNER OF SECTION 34, WE MARKED PROPERTY BOUNDARIES ON TRUE LINE BETWEEN CORNERS. THE NORTH 1/4 CORNER LIES IN WET AREA AT HEAD OF DRAW.

FIRM/AGENCY: LONE ROCK TIMBER MANAGEMENT CO.
ADDRESS: P.O. BOX 1127
ROSEBURG, OR 97470
PARTY CHIEF: KEN W. HOFFINE
NOTES: GARY ANGIOLET
WITNESS: IGNACIO ROMAN

FILED

Date: 7/24/2018 By: Jc
This survey consists of:

Map: _____
Narrative: _____
Corner Rpt: CS 65/101-52

DOUGLAS COUNTY
SURVEYOR

C.S. FILE 65/101-52

REGISTERED
PROFESSIONAL
LAND SURVEYOR

Ken W. Hoffine
OREGON
JULY 16, 1987
KEN W. HOFFINE
PLS 2291

EXPIRES 6-30-19