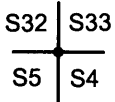


OREGON CORNER RESTORATION FORM

Section 4 Township 24 S. Range 6W  
 County Douglas Date 11/20/17  
 Tract Yellow Creek PLSS/GCDB 300700

FILED  
 Date 1-18-2018 BY JC  
 This survey consists of  
 Map  
 Range  
 Corner Ref. CS 65/99-29  
**DOUGLAS COUNTY SURVEYOR**

Corner Designation



- \_\_\_\_\_ Condition Report Only
- \_\_\_\_\_ Not Found
- \_\_\_\_\_ Renewed
- \_\_\_\_\_ Unrecorded
- \_\_\_\_\_ Surveyed In
- X \_\_\_\_\_ Referenced Out

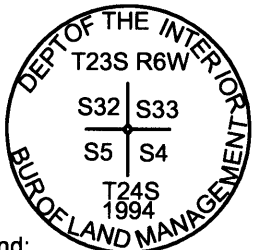
Previous Renewals/Surveys, etc.

1994 BLM Dependant Resurvey Filed in DCSO records Vol. 51 Pages 19449 - 50 , 2010 Corner Renewal  
By Ward CS 65/69-26, Hoffine Corner Renewal CS 65/93-54

Accessories Found: (Condition and Source)

- BT 1 25" Doug. Fir Stump 2 ft. Tall Bears N78 1/4°E 12.5 Ft. (Record N78 1/4°W 12.5 Ft.) We Cover With Metal Roofing.
- BT 2 15" Doug. Fir Stump Bears S7 1/4°E 60.8 Ft. (Record S4 1/2°E 60.7 Ft.) Cut Below Scribe, We Cover With Metal Roofing.
- BT 3 28" Doug. Fir Stump Bears S55°W 46.3 Ft. (Record S58°W 46.2 Ft.) Cut Below Scribing, We Cover With Metal Roofing.
- 12" Cedar 3 Ft. Tall Stump At Record Bearing of N14°W 29.7 Ft. Is Standing We Did Not Measure As Tree Is Behind Small Rock Bluff. We Cover With Metal Roofing
- 1957 Erroneous Pipe Bent And With No Cap Bears S16°57'30"W 23.17 Ft. (Record S16°57'30"W 23.56 Ft.)
- IR 1 5/8" X 40" Iron Rod With Orange Plastic Cap Bears S39°45'W 131.68 Ft. As Per Record Put U-Post Alongside
- IR 2 5/8" X 40" Iron Rod With Orange Plastic Cap Bears N16°34'E 183.46 Ft. As Per Record Put U-Post Alongside
- IR 3 5/8" X 40" Iron Rod With Orange Plastic Cap Bears N8°43'E 239.64' Ft. As Per Record Put U-Post Alongside
- 8" Mag Spike In Root Of Bearing Tree Bears N59°12' E 9.26 Ft.

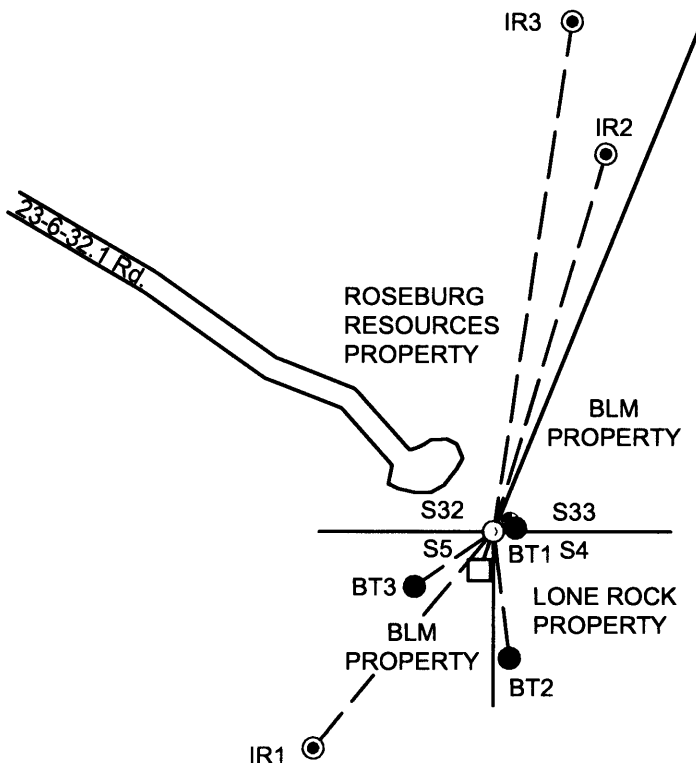
Monument Detail



Legend:

- Found 1994 BLM Cap
- Existing Bearing Trees
- Set 5/8" X 40" Iron Rod With Orange Plastic Cap Lone Rock Timber PLS 2291
- MAG HUB SPIKE
- Erroneous BLM Corner Set In 1957

Sketch



Monument Found

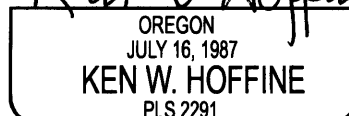
Found 1994 BLM BCIP

New Accessories

Location & Comments

After logging we visited the NWSC of section 4.  
to check condition of corner and cover bearing  
tree stumps with metal roofing material. The  
monument lies directly below the landing and in  
yarder wedge, We found corner in good condition.  
We installed a U-Post alongside corner as the  
record post was destroyed by logging. We also  
installed U-Posts alongside each of the reference  
rods.

Bearing Basis Assumed From BLM Dependant  
Resurvey 1994 BCIP To  
Erroneous Corner.  
 Firm/Agency Lone Rock Timber Co.  
 Address P. O. Box 1127  
Roseburg, Ore. 97470  
 Party Chief Ken W. Hoffine  
 Notes G. Angiolet  
 Witness I. Roman



EXPIRES 6-30-19

C.S. FILE 65/99-29