

NARRATIVE:

THE PURPOSE OF THIS SURVEY IS TO RENEW PREVIOUSLY ESTABLISHED EXISTING FOUND MONUMENTS, AND MARK PROPERTY BOUNDARIES ON TRUE LINE BETWEEN THESE MONUMENTS LOCATED ON THE EXTERIOR OF THE SOUTHEAST QUARTER OF SECTION 8. WE INITIATED THIS SURVEY AT THE SOUTHEAST CORNER OF SECTION 8 (4), A DOUGLAS COUNTY 1958 BCIP SET FROM PERPETUATED ORIGINAL EVIDENCE FOUND BY COUNTY SURVEYOR AUTHOR BOYER IN 1937. WE THEN COMMENCED A CLOSED LOOP RANDOM TRANSIT SURVEY ALONG AND NEAR PROPERTY BOUNDARIES AROUND THE SOUTHEAST QUARTER OF SECTION 8. THE SOUTH 1/4 (3) WAS ESTABLISHED BY PROPORTION BY WILFORD HAINES (M26-83) IN 1963 AND SUBSEQUENTLY RE-ESTABLISHED BY A BLM BCIP IN 2007. THE CENTER 1/4 OF SECTION 8 (2) IS A T-BAR ESTABLISHED IN THE SAME 1963 SURVEY BY HAINES ABOVE. THE EAST 1/4 (1) AND THE SOUTH 1/16 (5) CORNERS WERE ESTABLISHED BY AUTHOR BOYER AT THE SAME TIME AS THE SECTION CORNER ABOVE IN 1937 AS SHOWN ON MAP IN DOUGLAS COUNTY RECORDS CS 32/50. BOYER SURVEYED FOR JAMES H. WITMEYER IN A NOVEMBER 16TH THRU 19TH, 1938 COURT CASE IN DISPUT WITH MORGAN H. PAYNE APPARENTLY OVER OWNERSHIP TO AN EXISTING FENCE LINE LOCATED SOUTH OF THE E-W CENTERLINE OF THE SW 1/4 OF SECTION 9. BOTH OWNERS WERE PRESENT DURING THE SURVEY BY THE NOTATION IN VOL. 4, PG. 43 AND APPARENTLY ACCEPTED THE SURVEY AND BOYER'S S 1/16 (5) CORNER. THE CORNER WAS RENEWED BY DOUGLAS COUNTY SURVEYORS OFFICE IN 1982 IN ITS ORIGINAL POSITION. BY MY MEASUREMENT THE SOUTH 1/16 (5) CORNER ESTABLISHED BY BOYER IS APPROXIMATELY 14 FEET EAST OF TRUE LINE BETWEEN THE SECTION AND QUARTER CORNER. HOWEVER ALL THREE CORNERS (E 1/4 (1), SOUTH 1/16 (5) AND SE SECTION CORNER (4)) WERE ALL ESTABLISHED BY BOYER AT THE SAME TIME USING EXISTING FENCE LINES AND CORNERS THAT BASED HEAVILY IN THEIR ESTABLISHMENT AND HAVE BEEN ACCEPTED AS TRUE POSITIONS FOR 80 YEARS. I DECIDED TO ACCEPT ALL THREE CORNER EXISTING POSITIONS FOR ESTABLISHING PROPERTY BOUNDARIES WE MARK. THIS SURVEY WAS DONE WITH A NIKON DTM 522 AND GEO MAX ZIP20R TOTAL STATION WITH GARY ANGIOLET, IGNACIO ROMAN, JOSH FOWLER AND DAN SAILY ASSISTING ME.

RECORD OF SURVEY

LOCATED IN
SE 1/4 OF SECTION 8 T.23 S. R 4 W.W.M.
DOUGLAS COUNTY, OR

Date: 10-2-2017 By: JC
 Map: CS 65/97-2
 Corner Rpt: _____
Douglas County Surveyors
Office

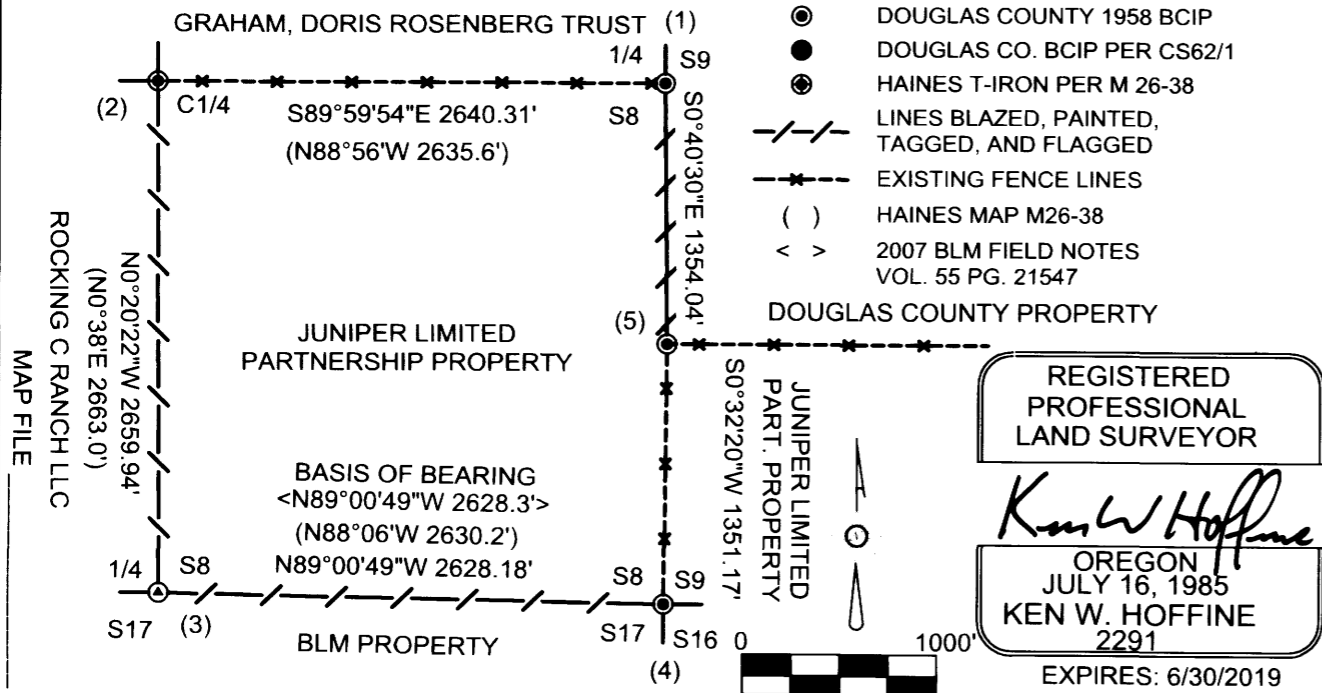
SURVEY FOR: JUNIPER PROPERTIES LIMITED PART.
SURVEY BY: LONE ROCK TIMBER MANAGEMENT COMPANY
P.O. BOX 1127 ROSEBURG, OR
TRACT: J 23-4-8 JULY 2017

CORNER INFORMATION:

- 1) THE QUARTER CORNER BETWEEN SECTIONS 8 & 9 GCDB 300540
 FOUND 1958 DOUGLAS COUNTY CAP
 -- 32" FIR STUMP BEARS N23 1/4°E 40.5 FT (RECORD N28 3/4°E 40.6 FT) HEALED FACE
 -- 29" FIR BEARS N45 1/2°W 18.4 FT (RECORD N39 1/2°W 18.5 FT) HEALED FACE AND TAG
 -- 27" FIR BEARS N71 1/2°E 34.2 FT (RECORD N71 1/2°E 34.9 FT) HEALED FACE AND TAG
 -- NEW 26" D. FIR BEARS S73 1/2°E 50.8 FT WE SCRIBE T23S R4W 1/4 S9 BT AND TAG TREE
 -- NEW 10" D. FIR BEARS S10 1/2°W 52.8 FT WE SCRIBE T23S R4W 1/4 S8 BT AND TAG TREE
 CORNER LIES APPROX. 1.0 FT EAST OF FENCE CORNER. FENCES RUN NORTH AND WEST FROM CORNER, AND APPROX. 3 FT. WEST OF SMALL CREEK.
- 2) THE CENTER QUARTER CORNER OF SECTION 8 GCDB 240540
 FOUND HAINES T-IRON PER MAP M26-38
 -- 38" CEDAR BEARS N80 3/4°E 12.1 FT (RECORD N82°25'E 11.9 FT PER CS 63/144
 NO VISIBLE MARKS WE TAG TREE
 -- NEW 9" W. FIR BEARS S33°E 43.4 FT WE SCRIBE T23S R4W C1/4 S8 BT AND TAG TREE
 -- NEW 12" W. FIR BEARS S26 3/4°W 30.1 FT WE SCRIBE T23S R4W C1/4 S8 BT AND TAG TREE
 -- NEW 33" CEDAR BEARS N60 1/4°W 48.7 FT WE SCRIBE T23S R4W C1/4 S8 BT AND TAG TREE
 CORNER IS A HAINES T-IRON THAT IS APPROX. 1 FOOT WEST OF FENCE CORNER. FENCE RUNS EAST FROM CORNER.
- 3) THE QUARTER CORNER BETWEEN SECTIONS 8 & 17 GCDB 240500
 FOUND 2007 BLM BRASS CAP PER BLM FIELD NOTES VOL. 55 PG. 21547
 -- 40" FIR BEARS S34°E 24.6 FT (RECORD S33 3/4°E 25.2 FT) HEALED FACE AND TAG
 -- 10" FIR BEARS N40°W 17.1 FT (RECORD N40°W 17.2 FT) HEALED FACE AND TAG
 -- NEW 10" DOUGLAS FIR BEARS S51 3/4°W 14.8 FT SCRIBE T23S R4W 1/4 S17 BT AND TAG TREE
 -- NEW 10" DOUGLAS FIR BEARS N19°E 33.5 FT SCRIBE T23S R3W 1/4 S8 BT AND TAG TREE
 CORNER LIES IN SMALL DEPRESSION APPROX. 120 FT WEST OF RIDGETOP
- 4) THE SOUTHEAST SECTION CORNER OF SECTION 8 GCDB 300500
 FOUND 1958 DOUGLAS COUNTY BRASS CAP
 -- 8" DOUGLAS FIR BEARS N30°E 33.9 FT AS PER MAP M172-80 HEALED FACE AND TAG
 -- 36" DOUGLAS FIR BEARS N19°W 48.1 FT AS PER MAP M172-80 HEALED FACE AND TAG
 -- 25" DOUGLAS FIR BEARS S76 1/2°W 22.4 FT AS PER MAP M172-80 HEALED FACE AND TAG
 -- 12" DOUGLAS FIR BEARS S64°E 55.4 FT AS PER MAP M172-80 HEALED FACE AND TAG
 CORNER IS 1.5 FT ABOVE GROUND AND IN A NORTH - SOUTH FENCE LINE.
- 5) THE SOUTH 1/16 TH CORNER BETWEEN SECTIONS 8 & 9 GCDB 300520
 FOUND 1982 DOUGLAS COUNTY BRASS CAP AS PER CS 62/1
 -- 13" ROTTEN STUMP BEARS S38 1/2°W 44.3 FT (RECORD S37 1/2°W 44.4 FT) VISIBLE SCRIBING
 -- 19" ROTTEN STUMP BEARS N44 1/2°E 12.2 FT (RECORD N44°W 12.0 FT) VISIBLE SCRIBING
 -- 10" ROTTEN STUMP BEARS N0 1/2°E 22.2 FT (RECORD N1°E 22.0 FT) VISIBLE SCRIBING
 -- NEW 10" DOUGLAS FIR BEARS S86 1/2°W 28.2 FT WE SCRIBE S1/16 S8 BT AND TAG TREE
 -- NEW 9" DOUGLAS FIR BEARS N13°E 27.2 FEET WE SCRIBE S1/16 S9 BT AND TAG TREE
 CORNER IS 1.5 FEET TALL AND ON NORTH SIDE OF FENCE CORNER POST. FENCES RUN EAST AND SOUTH FROM CORNER.

LEGEND:

- ⊙ 2007 BLM BCIP VOL. 55 PG. 21547
- DOUGLAS COUNTY 1958 BCIP
- DOUGLAS CO. BCIP PER CS62/1
- HAINES T-IRON PER M 26-38
- LINES BLAZED, PAINTED, TAGGED, AND FLAGGED
- *- EXISTING FENCE LINES
- () HAINES MAP M26-38
- < > 2007 BLM FIELD NOTES VOL. 55 PG. 21547



CS MAP FILE 65/97-2

CS 65/97-2