

RECORD OF SURVEY
 LOCATED IN
 N1/2 OF THE NE1/4 SECTION 8
 T, 26 S. R. 2 W. W. M.
 DOUGLAS COUNTY, OR

SURVEY FOR: LONE ROCK TIMBER INVESTMENTS II
 SURVEY BY: LONE ROCK TIMBER MANAGEMENT COMPANY
 P.O. BOX 1127 ROSEBURG, OR 97470
 TRACT: F260208
 AUGUST 2017

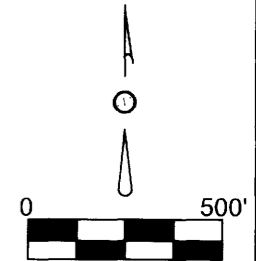
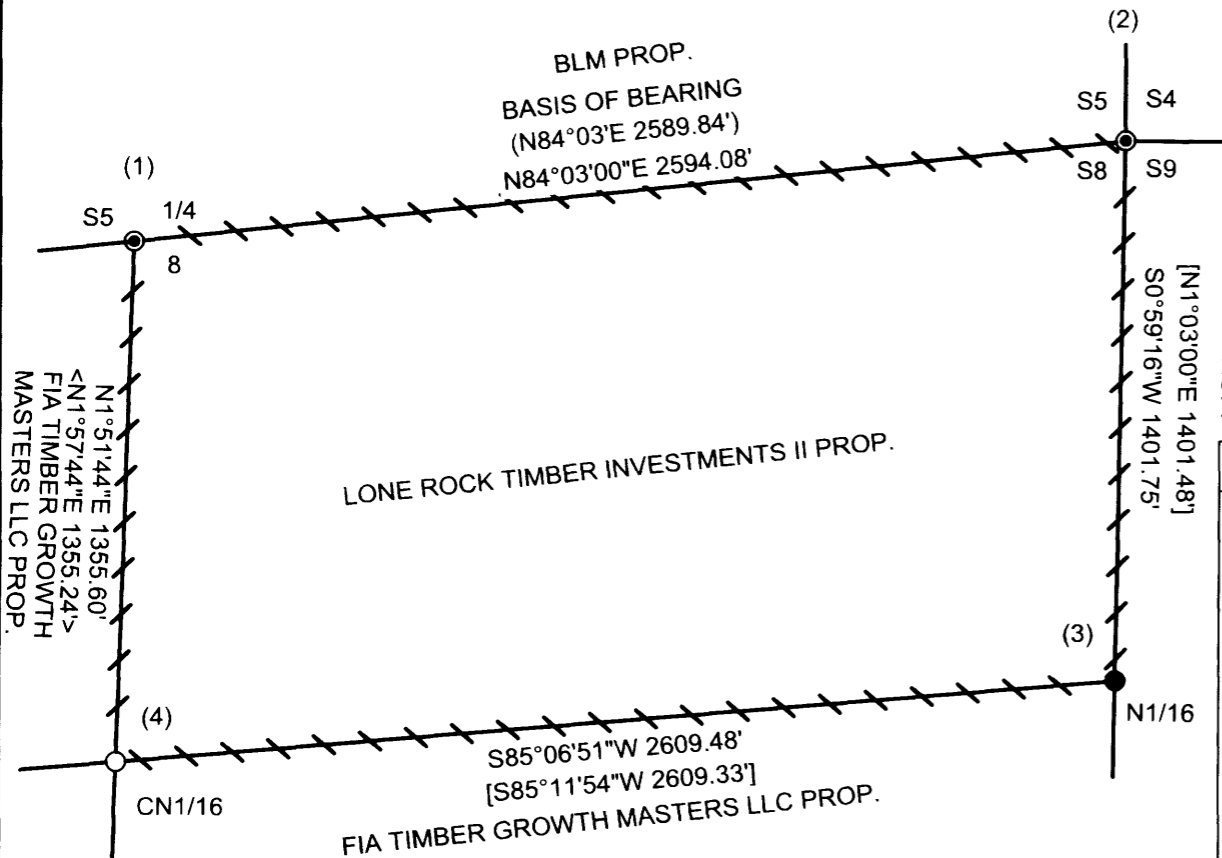
CORNER INFORMATION:

Date: 10-2-2017 By: JC
 Map: CS 65/97-1
 Corner Rpt: Douglas Co. Surveyors Office

NARRATIVE:

THE PURPOSE OF THIS SURVEY IS TO RE-ESTABLISH PROPERTY LINES AROUND THE N1/2NE1/4 OF SECTION 8 FOR TIMBER MANAGEMENT PURPOSES. THE NESC (2) AND NORTH QUARTER (1) CORNERS OF SECTION 8 WERE ESTABLISHED BY CALDER FOR WEYERHAEUSER IN 1957 (C. S. 40/39) AND SUBSEQUENTLY BOTH CORNERS WERE RE-MONUMENTED BY BLM IN 1959. SECTION 8 WAS SUBDIVIDED BY RAMSEY (C.S. 51-86) IN 1960, WITH A 1975 BAUGHMAN SURVEY (M56-17) USING RAMSEY'S SUBDIVISION TO SET THE CENTER-NORTH 1/16 (4) CORNER. IN 1985 BAKER SET THE N1/16 (3) FOR SECTIONS 8 AND 9 BETWEEN THE NORTHEAST SECTION CORNER AND THE EAST QUARTER CORNER OF SECTION 8 ALSO SET BY PROPORTION BY BLM 1959. WE RAN A CONVENTIONAL RANDOM CLOSED LOOP ALONG THE PROPERTY LINES TO THE ABOVE MONUMENTS AND TO GPS POINTS WE ESTABLISHED IN OPEN AREAS TO AID IN CONTROL. THE AREA TRAVERSED IS EXTREMELY RUGGED WITH MANY LARGE OUTCROPPINGS AND BLUFFS. WE THEN COMPUTED OFFSETS FROM OUR RANDOM TRAVERSE POINTS TO RIBBON, BLAZE, PAINT AND TAG THE PROPERTY LINES SHOWN ON THIS MAP. THIS SURVEY WAS DONE WITH A NIKON DTM 522 AND TRIMBLE GEO6000 CENTIMETER GRADE GPS WITH GARY ANGIOLET, IGNACIO ROMAN, DAN SAILY, KATIE NICHOLS AND WES ADDINGTON ASSISTING ME.

- 1) THE QUARTER CORNER BETWEEN SECTION 5 & 8 GCDB 240600
 FOUND 1959 BLM BRASS CAP
 -- 24" FIR BEARS S26 1/2°E 18.5 FT. (RECORD S25°E 18.6 FT.) HEALED FACE AND TAG
 -- 18" FIR BEARS N36 1/2°W 5.7 FT. (RECORD N40°W 6.6 FT.) HEALED FACE AND TAG
 -- 36" FIR BEARS N53°E 33.8 FT. (RECORD N53°E 32.5 FT.) HEALED FACE AND TAG
 -- 28" FIR BEARS S11 1/4°E 14.4 FT. (RECORD S11°E 14.0 FT.) HEALED FACE AND TAG
 CORNER LIES ON SMALL FINGER RIDGE THAT IS RUNNING TO THE SOUTHWEST.
- 2) THE NORTHWEST SECTION CORNER FOR SECTIONS 8 GCDB 300600
 FOUND 1959 BLM BRASS CAP
 -- 36" FIR BEARS N43 3/4°E 43.2 FT. AS PER RECORD HEALED FACE AND TAG
 -- 33" FIR BEARS S20 1/2°E 37.3 FT. AS PER RECORD HEALED FACE AND TAG
 -- 16" FIR BEARS S57 1/4°W 22.4 FT. AS PER RECORD HEALED FACE AND TAG
 -- 28" FIR BEARS N83 1/2°E 41.9 FT. AS PER RECORD HEALED FACE AND TAG
 CORNER LIES ON SOUTHWEST SLOPE AND SOUTHWESTERLY OF LARGE BARREN ROCK AREA.
- 3) THE NORTH 1/16 CORNER BETWEEN SECTIONS 8 & 9 GCDB 300560
 FOUND BAKER 5/8" IRON ROD WITH YELLOW PLASTIC CAP PER MAP M99-63
 --24" CEDAR BEARS S71 3/4°E 35.1 FT. (RECORD S70°E 34.5 FT.)
 HEALED FACE AND TAG
 --30" HEMLOCK BEARS S39 1/2°W 16.5 FT. (RECORD S46 1/2°W 15.6 FT.)
 HEALED FACE AND TAG
 CORNER IS AT GROUND LEVEL AT BASE OF SMALL BLUFF. METAL FENCE POST APPROX. 2.0 FT. SOUTHERLY OF CORNER
- 4) THE CENTER-NORTH 1/16 CORNER FOR SECTION 8 GCDB 240560
 FOUND 5/8" IRON ROD PER MAP M56-17
 -- 24" CEDAR STUMP BEARS N84 3/4°E 32.0 FT. (RECORD N86 1/2°E 30.9 FT. TO "W" NAIL)
 VISIBLE SCRIBING AND TAG
 -- 46" FIR STUMP BEARS S40 1/4°E 21.0 FT. (RECORD S39°E 19.2 FT. TO "W" NAIL) TAG
 -- NEW 9" FIR BEARS N26°W 26.6 FT. WE SCRIBE CN1/16 S8 BT AND TAG TREE
 -- NEW 11" FIR BEARS N83 1/2°W 12.0 FT. WE SCRIBE CN1/16 S8 BT AND TAG TREE
 CORNER LIES ON STEEP SOUTH FACING SLOPE APPROX. 150 FT. EAST OF OLD ROCK ROAD.
 METAL FENCE POST APPROX. 2.0 FEET EASTERLY OF CORNER.



LEGEND	
●	1959 BLM BCIP
●	5/8" I.R. WITH BAKER YELLOW PLASTIC CAP PER MAP M99-63
○	5/8" REBAR PER MAP M56-17
	LINES BLAZED, PAINTED, TAGGED, AND FLAGGED
()	BLM FIELD NOTES PAGES 12750-1
[]	BAKER 1985 SURVEY M99-63
< >	BAUGHMAN 1975 SURVEY M56-17

REGISTERED
 PROFESSIONAL
 LAND SURVEYOR

Ken W. Hoffine

OREGON
 JULY 16, 1985
 KEN W. HOFFINE
 2291
 EXPIRES: 6/30/2019

MAP FILE CS 65/97-1

CS 65/97-1