

SURVEY FOR: JUNIPER PROPERTIES LLC P.O. BOX 1127 ROSEBURG, OR
SURVEY BY: LONE ROCK TIMBER MANAGEMENT CO. P.O. BOX 1127 ROSEBURG, OR 97470
SE1/4 SECTION 28, T22S R5W W.M. DOUGLAS COUNTY, OREGON

FILED
 DATE: 5-11-2017 BY: JC

NARRATIVE

THE CORNER NUMBERS ON THIS MAP ARE THE SAME AS THE CORNER NUMBERS ON MAP M168-44A. LONE ROCK TIMBER SURVEYED AND LOCATED THE ABOVE MONUMENTS 9, 10, 11, 12 AND 14 IN 2014 IN MAP M168-44A. PROPERTY CORNER (11) WAS OBLITERATED BY RECENT LOGGING ACTIVITY BY THE PROPERTY OWNER TO THE EAST OF THE JUNIPER PROPERTY. WE RAN A RANDOM CLOSED LOOP TRAVERSE TYING IN CORNERS (9) AND (10) TO CREATE A BASIS OF BEARING AND FROM THE SAME LOOP TIED IN CORNERS (12) AND (14). WE THEN COMPUTED, USING M168-44A RECORD DISTANCES, AN INTERSECTION FROM CORNER (10) AND CORNER (14) TO RESET THE MISSING 5/8" IRON ROD (11). WE THEN PLACED METAL FENCE POSTS ON LINE BETWEEN CORNERS (10), (11), AND (14). THIS SURVEY WAS DONE WITH A GEOMAX ZIPP 20 TOTAL STATION USING CARLSON SURVCE DATA COLLECTION SOFTWARE, WITH DANIEL SAILY AND IGNACIO ROMAN ASSISTING ME.

APRIL 2017

HOLLAMON TRACT

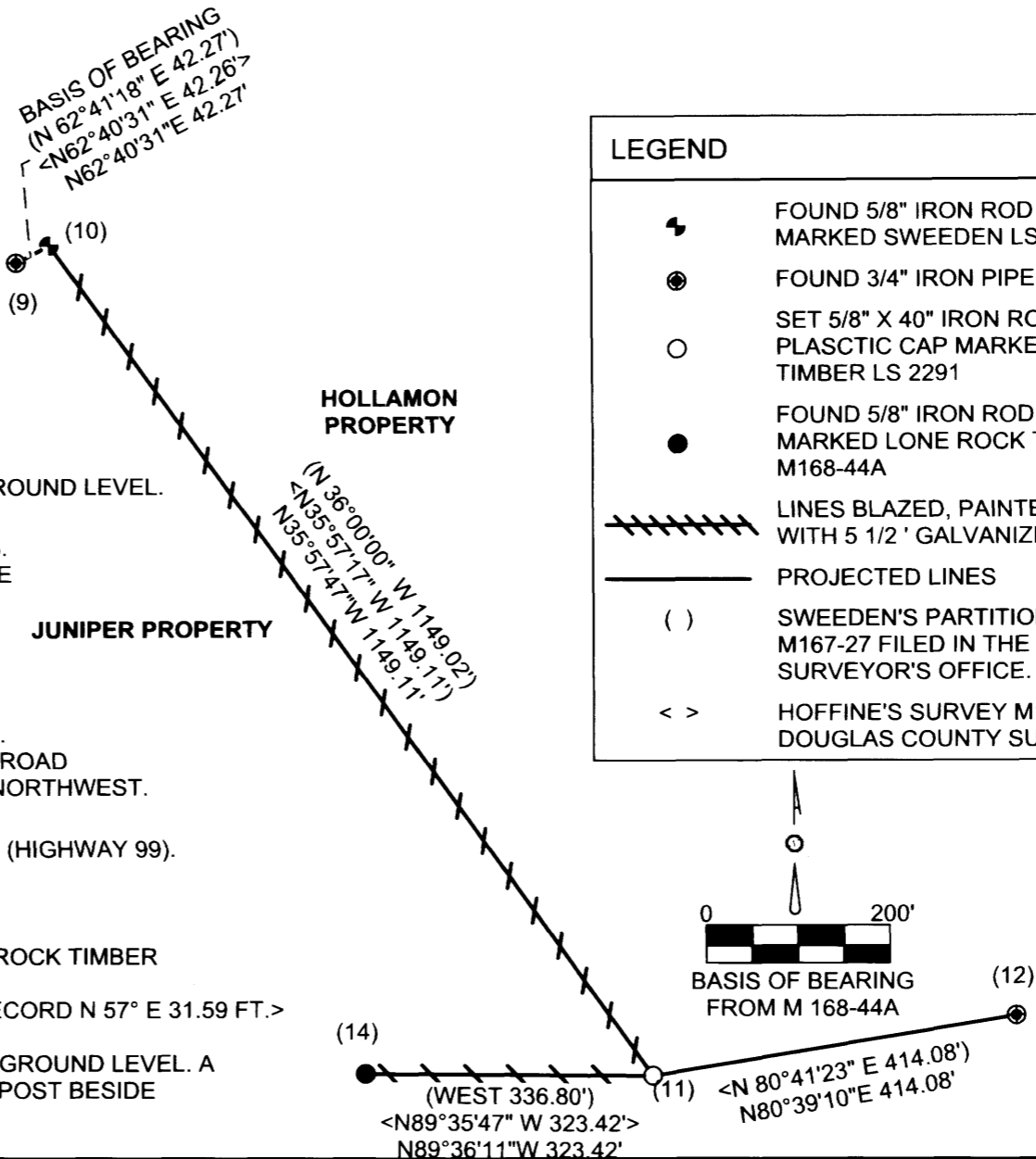
THIS SURVEY CONSISTS OF:

MAP: C 365196-7
 NARRATIVE: _____
 CORNER RPT: _____

DOUGLAS COUNTY
 SURVEYOR

CORNER INFORMATION

- 9) PROPERTY CORNER
 FOUND 3/4" IRON PIPE.
 CORNER LIES IN NORTHEAST RUNNING FENCELINE 0.8 FT. ABOVE GROUND LEVEL.
- 10) NORTHWEST CORNER OF PARCEL 2 PP 2013-0008
 FOUND 5/8" IRON ROD WITH RED PLASTIC CAP AS PER PP 2013-0008.
 CORNER LIES ON NORTH SIDE OF NORTHEAST RUNNING FENCELINE AT GROUND LEVEL. A METAL T-POST LIES 1.0 FT. SOUTH.
- 11) PROPERTY CORNER
 SET 5/8" X 40" IRON ROD WITH YELLOW PLASTIC CAP MARKED LONE ROCK TIMBER LS 2291.
 -- 23" DOUGLAS-FIR BEARS N 52° W 50.8 FT. WE TAG AND SCRIBE BT.
 CORNER LIES ON STEEP EAST SLOPE APPROX. 3 FT. WEST OF CAT ROAD 0.3 FT. ABOVE GROUND LEVEL. WE PLACE A STEEL U-POST 1.0 FT. NORTHWEST.
- 12) PROPERTY CORNER
 FOUND 3/4" IRON PIPE ON RIGHT OF WAY OF EAGLE VALLEY ROAD (HIGHWAY 99).
 CORNER LIES IN DITCHLINE OF HIGHWAY AT GROUND LEVEL.
- 14) PROPERTY CORNER
 FOUND 5/8" IRON ROD WITH YELLOW PLASTIC CAP MARKED LONE ROCK TIMBER LS 2291 AS PER MAP M168-44A.
 -- 22" X 7 FT. TALL DOUGLAS-FIR STUMP BEARS N 57° E 31.5 FT. <RECORD N 57° E 31.59 FT.>
 TAG AND VISIBLE SCRIBING (BT).
 CORNER LIES APPROX. 20 FT. EAST OF ROCK ROAD 0.4 FT. ABOVE GROUND LEVEL. A METAL U-POST LIES 1.0 FT. NORTH. WE PLACE ANOTHER METAL U-POST BESIDE CORNER



LEGEND

- FOUND 5/8" IRON ROD WITH RED PLASTIC CAP MARKED SWEEDEN LS 2751 AS PER MAP M167-27.
- FOUND 3/4" IRON PIPE
- SET 5/8" X 40" IRON ROD WITH YELLOW PLASTIC CAP MARKED LONE ROCK TIMBER LS 2291
- FOUND 5/8" IRON ROD WITH YELLOW PLASTIC CAP MARKED LONE ROCK TIMBER LS 2291 AS PER MAP M168-44A
- LINES BLAZED, PAINTED, TAGGED AND POSTED WITH 5 1/2' GALVANIZED STEEL POSTS.
- PROJECTED LINES
- SWEEDEN'S PARTITION PLAT 2013-0008 OR SURVEY M167-27 FILED IN THE DOUGLAS COUNTY SURVEYOR'S OFFICE.
- HOFFINE'S SURVEY M168-44A FILED IN THE DOUGLAS COUNTY SURVEYOR'S OFFICE.

REGISTERED
 PROFESSIONAL
 LAND SURVEYOR

Ken W. Hoffine
 OREGON
 JULY 16, 1987
 KEN W. HOFFINE
 2291

EXPIRES: 6/30/2017