

# RECORD OF SURVEY

LOCATED IN THE NW 1/4 OF  
SECTION 22, T.27S., R.2W., W.M.  
DOUGLAS COUNTY, OREGON  
"EGGLESTRON CREEK SURVEY"

FILED

Date: 2-23-2017 By: JC

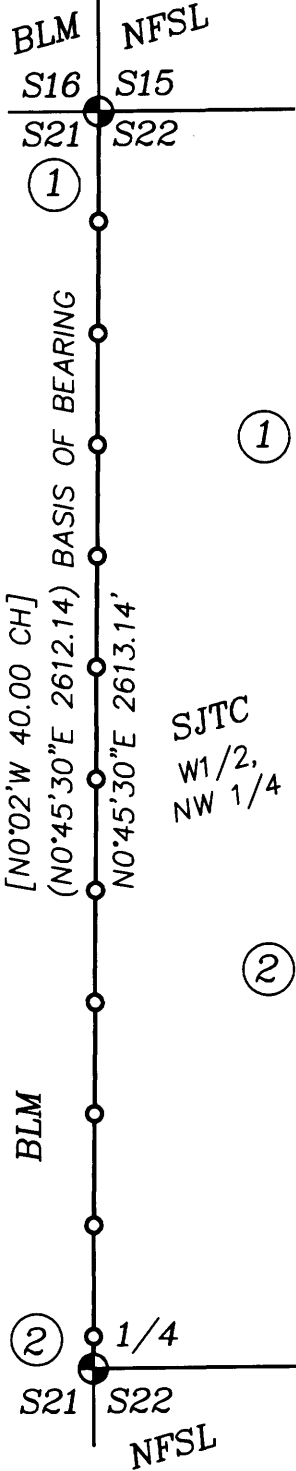
This Survey Consists of:

Map: CS 65/96-3

Narrative: \_\_\_\_\_

Corner Rpt.: \_\_\_\_\_

DOUGLAS COUNTY  
SURVEYOR



## NARRATIVE:

THE PURPOSE OF THIS SURVEY IS TO MARK THE WESTERN BOUNDARY OF SENECA JONES TIMBER CO. LAND, LOCATED IN THE W 1/2 OF THE NW 1/4 OF S22, FOR TIMBER MANAGEMENT PURPOSES. THE NORTH, SOUTH, AND EAST BOUNDARIES WERE POSTED TO USFS CONTRACT STANDARDS BY R.WARE IN 1978 PER M70-25. A CLOSED LOOP TRAVERSE WAS RUN BETWEEN THE CORNER OF S15/S16/S21/S22 AND THE 1/4 OF S21/S22, AND ADJUSTED IN LEICA GEO OFFICE BY THE METHOD OF LEAST SQUARES. I ACCEPT THE CORNERS AS MONUMENTED, AND POST, PAINT & BLAZE TRUE LINE BETWEEN THE CORNERS. ALL EXISTING BEARING TREES ARE TIED, WITH A MAG-HUB AT SIDE CTR OF ROOT CROWN. THE NEW BEARING TREE IS SCRIBED ON A DBL. BLAZE, WITH A 1" BRASS WASHER "DEGROOT PLS89398" IN LOWER BLAZE.

### ① S15/S16/S21/S22 PLSS 400400

FD. THE 1968 DCSO BCIP, LOOSELY SET AND LEANING N.45°W., ±1.0 FT. I RETURN TO PLUMB AND REBUILD THE 36" DIAM. x 18" HIGH STONE MOUND, MONUMENT NOW PROJECTS 8" ABOVE TOP. CORNER SITS AT BASE OF NE BEARING TREE, MONUMENT IS AGAINST LARGE ROOT TO SE.

FROM WHICH ORIGINAL BEARING TREES BY M.WYGANT:

A 46" CEDAR BEARS RECORD N.68°E., 3.5 FT W/RE-HEALED BLAZE

[N.68°E., 201 LKS.] {N.68°E., 3.5 FT}

A 32" CEDAR BEARS S.17°45'E., 44.7 FT W/RE-HEALED BLAZE

[S.25°E., 70 LKS.] {S.15°E., 46.2 FT}

A 27" W.FIR SNAG BEARS S.17°30'W., 46.2 FT W/HEALED BLAZE

[S.19°W., 71 LKS.] {S.19°W., 46.9 FT}

AND BEARING TREES BY DCSO IN 1968:

A 20" CEDAR BEARS N.19°E., 23.1 FT W/HEALED BLAZE {N.21°E., 23.2 FT}

A 28" W.FIR BEARS S.82°30'E., 28.9 FT W/HEALED BLAZE {S.81°E., 29.1 FT}

A 24" W.FIR BEARS N.69°30'W., 30.5 FT W/HEALED BLAZE {N.69°W., 30.2 FT}

### ② 1/4 S21/S22 PLSS 400340

FD. THE 1968 DCSO BCIP, LOOSELY SET AND LEANING NORTH, ±0.5 FT. I RETURN TO PLUMB AND REBUILD THE 36" DIAM. x 24" HIGH STONE MOUND, MONUMENT NOW PROJECTS 6" ABOVE TOP.

FROM WHICH ORIGINAL BEARING TREES BY M.WYGANT:

A 17" D.FIR BEARS S.86°45'E., 3.8 FT W/RE-HEALED BLAZE

[S.89°E., 51 LKS.] {S.71°E., 4.0 FT}

A 20" D.FIR STAUB BEARS N.73°02'W., 4.67 FT TO MAG-HUB IN TOP, SAME 2'x3'x3' BOULDER RESTS AGAINST FACE [N.89°W., 52 LKS] {N.71°W., 4.6 FT}

AND BEARING TREES BY DCSO IN 1968:

A 21" D.FIR SNAG BEARS N.78°E., 6.6 FT W/HEALED BLAZE {N.84°E., 6.3 FT}

A 15" D.FIR STAUB BEARS N.47°15'W., 5.9 FT W/ROTTED BLAZE {N.45°W., 6.6'}

AND A NEW BEARING TREE:

A 6" D.FIR BEARS S.38°30'W., 17.8 FT SCRIBED "1/4 S21 BT"

## LEGEND:

⊙ = FOUND PLSS MONUMENT AS NOTED

SJTC = SENECA JONES TIMBER CO.

NFSL = NATIONAL FOREST SYSTEM LANDS

( ) = RECORD PER M70-25 BY R.WARE IN 1978

{ } = RECORD PER C.S. 54/40 - DCSO 1968

[ ] = RECORD PER US GLO, MORRIS WYGANT IN 1911, DCSO VOL.12 PG. 4942-43

—○— = PROPERTY LINES BLAZED, PAINTED RED & POSTED WITH 6' STEEL POSTS

REGISTERED  
PROFESSIONAL  
LAND SURVEYOR

*Adam Degroot*

OREGON  
MAY 26, 2015  
ADAM DEGROOT  
89398

RENEWS: 12-31-2017

# BTS

## ENGINEERING & SURVEYING, INC.

348 SE JACKSON ST, ROSEBURG, OR 97470  
(541) 673-0966 adam@btssurveying.com

SCALE: 1" = 400'

DATE: 2-23-2017

FOR: SENECA JONES TIMBER CO.

PO BOX 2129

ROSEBURG, OR 97470

JOB #: 17-002

FILE: EgglestronCrk\_Plat.DWG

SHEET 1 OF 1

C.S. File No 65/96-3