

FILED

Date: 7-19-2017 By: JC

This survey consists of:

Map: _____

Narrative: _____

Corner Rpt: CS 65/95-47

DOUGLAS COUNTY
SURVEYOR

CORNER REPORT FORM

Section 33 Township 21S Range 6W
Douglas County Date 7/07/2017
PLSS Number 400100

CORNER DESIGNATION

SEC COR FOR S33 & S34, T21S, R6W, S3 & S4 T22S, R6W

- Condition Report only
- Not Found
- Renewed
- Unrecorded
- Surveyed In
- Referenced out

Previous Renewals/Surveys, etc:

M 118-39 CORNER RESTORED FROM ORIGINAL EVIDENCE IN 1961 PER CS FILE 49/143, RENEWED IN 1973 PER CS FILE 56/38 & IN 1992 PER CS FILE 64/24. 1961 DCSO BCIP WAS FOUND & HELD IN A 1973 USBLM DEPENDENT RESURVEY AND IN 1994 PER M 118-39.

Monument(s) & Accessories Found: (Condition and Source)

FOUND 2-1/2" BRASS CAP (LEANING SW)

10" YEW NOW 12" WITH HEALED FACE FALLEN- STUMP HOLE BEARS N48°W 49.4' - 1961 BT

8" MAPLE NOW 16" - MARKINGS ILLEGIBLE - BEARS S48°E 10.5' - 1973 BT

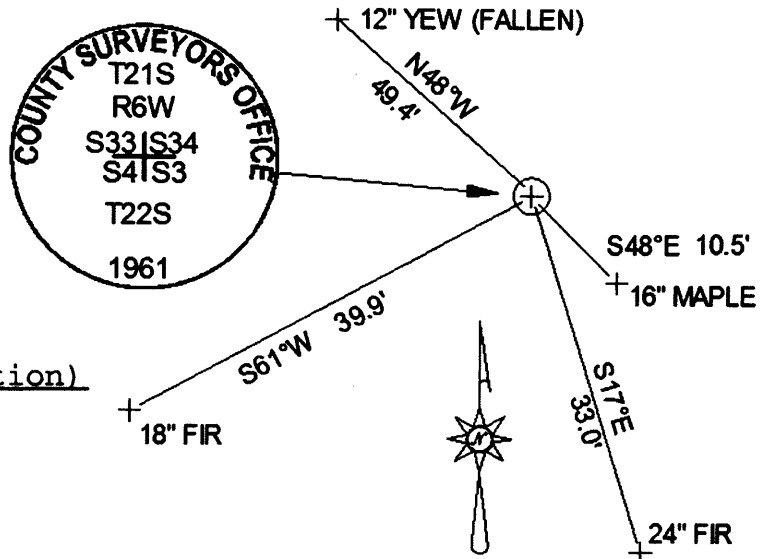
13" W. FIR NOW 24" WITH HEALED FACE BEARS S17°E 33.0' (RECORD S18-1/2°W 33.2') - 1992 BT

13" W. FIR NOW 18" WITH HEALED FACE BEARS S61°W 39.9' (RECORD S58°W 38.8'). - 1992 BT

Monument Detail

2-1/2" BRASS CAP ON 1-1/2" IRON POST
POST BENT S60°W 0.7'
CORNER FALLS AT THE CORNER OF AN OLD
FENCE LINE RUNNING WEST AND SOUTH
FROM THE CORNER

Sketch



Monument Set (Procedures and Description)

NOTHING SET

New Accessories

SET ALUMINUM CHANNEL MARKER POST WITH BLM LAND SURVEY MARKER SIGN 3' WEST OF CORNER

Location & Comments

BEARINGS ARE BASED ON
1973 BLM SURVEY

Compass Declination NOT USED

Firm/Agency: WOBBE & ASSOC. INC.

Address: P.O. BOX 3093

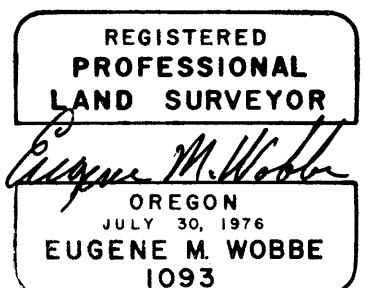
FLORENCE, OREGON

Party Chief: SEAN LANGE

Notes: _____

Witness: MATTHEW TERNYIK

Surveyor's Seal



C.S. File 65/95-47