

FILED

Date: 7-19-2017 By: JC

This survey consists of:

Map: _____

Narrative: _____

Corner Rpt: CS 65/95-46

**DOUGLAS COUNTY
SURVEYOR**

CORNER REPORT FORM

Section 33 Township 21S Range 6W
Douglas County Date 7/07/2017
PLSS Number 340100

CORNER DESIGNATION

1/4 COR FOR S33, T21S, R6W, S4, T22S, R6W

- Condition Report only
- Not Found
- Renewed
- Unrecorded
- Surveyed In
- Referenced out

Previous Renewals/Surveys, etc:

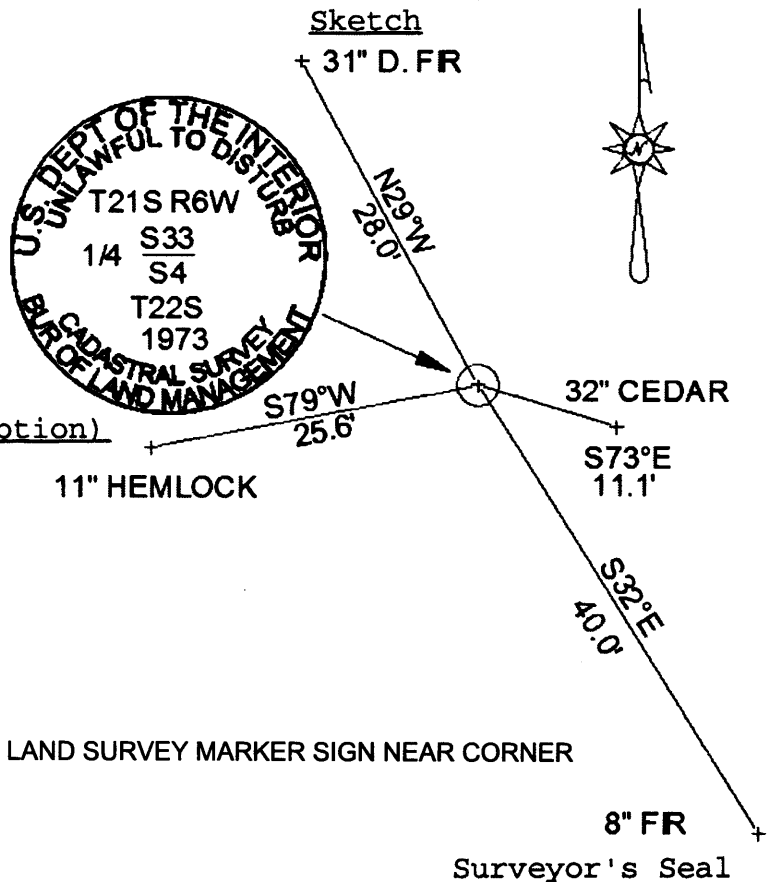
M 160-72 RESTORED AT PROPORTIONATE DISTANCE PER A 1973 USBLM DEPENDENT RESURVEY
RENEWED IN 2010 PER M 160-72

Monument(s) & Accessories Found: (Condition and Source)

- FOUND 3-1/4" BRASS CAP - BLM 1973
- 10" D. FIR NOW 31" WITH HEALED FACE BEARS N29°W 28.0' (RECORD 28.7') - 1973 BT
- 10" CEDAR NOW 32" WITH HEALED FACE BEARS S73°E 11.1' (RECORD S70°E 10.7') - 1973 BT
- 8" D. FIR NOW 8" WITH PITCH/HEALED FACE BEARS S32°E 40.0' (RECORD 39.3') - 2010 BT
- 10" HEMLOCK NOW 11" WITH RECORD SCRIBES LEGIBLE ON PARTIALLY HEALED FACE
BEARS S79°W 25.6' (RECORD S32°W 25.6')- 2010 BT

Monument Detail

3-1/4" BRASS CAP ON 2-1/2" IRON POST



Monument Set (Procedures and Description)

NOTHING SET

New Accessories

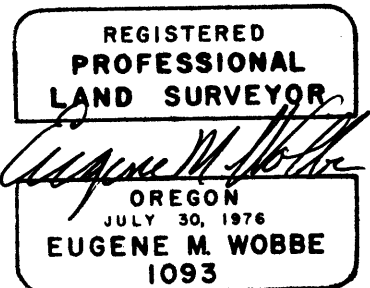
SET ALUMINUM CHANNEL MARKER POST WITH BLM LAND SURVEY MARKER SIGN NEAR CORNER

8" FR
Surveyor's Seal

Location & Comments

BEARINGSS ARE BASED ON
1973 BLM SURVEY

Compass Declination NOT USED
 Firm/Agency: WOBBE & ASSOC. INC
 Address: P.O. BOX 3093
FLORENCE, OREGON
 Party Chief: SEAN LANGE
 Notes: _____
 Witness: MATTHEW TERNYIK



C.S. File 65/95-46