

FILED

Date: 7-19-2017 By: JC

This survey consists of:

Map: _____

Narrative: _____

Corner Rpt: CS 65/95-45

DOUGLAS COUNTY
SURVEYOR

CORNER REPORT FORM

Section 33 Township 21S Range 6W
Douglas County Date 7/07/2017
PLSS Number 300100

CORNER DESIGNATION

SEC COR FOR S32 & S33, T21S, R6W, S4 & S5 T22S, R6W

- Condition Report only
- Not Found
- Renewed
- Unrecorded
- Surveyed In
- Referenced out

Previous Renewals/Surveys, etc:

M 160-72 CORNER RESTORED FROM ORIGINAL EVIDENCE IN 1961 PER CS FILE 49/143 & RENEWED IN 1974 PER CS FILE 56/43. THE 1961 DCSO ACIP WAS FOUND AND HELD PER M 32-71, M 155-71, M 160-72 & A 1973 USBLM DEPENDENT RESURVEY.

Monument(s) & Accessories Found: (Condition and Source)

FOUND 2-1/2" BRASS CAP

12" D. FIR NOW 30" WITH HEALED FACE BEARS N5-1/2°E 23.4' (RECORD N6-1/2°E)- 1961 BT

17" D. FIR NOW 31" WITH HEALED FACE BEARS S20°E 20.4' (RECORD 20.6') - 1961 BT

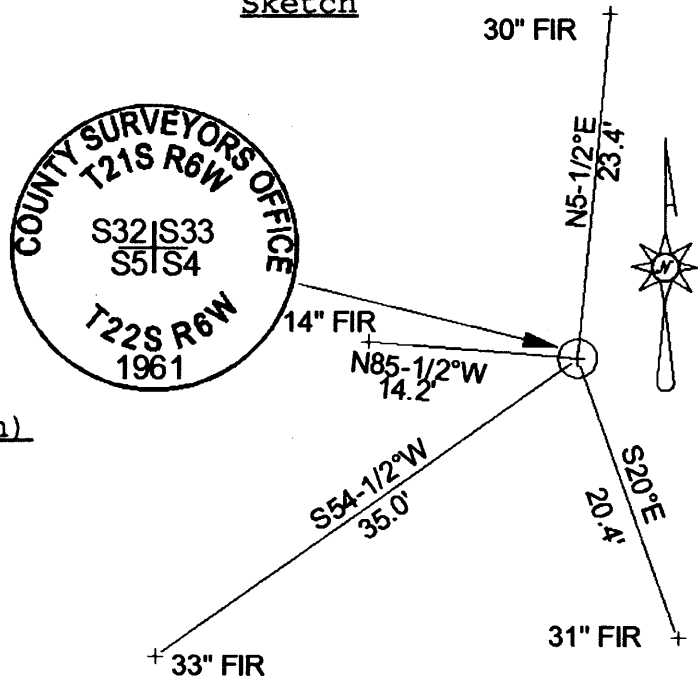
20" D. FIR NOW 33" WITH HEALED FACE BEARS S54-1/2°W 35.0' (RECORD S54°W 34.9') - 1974 BT

8" D. FIR NOW 14" WITH HEALED FACE BEARS N85-1/2°W 14.2. - 1961 BT

Monument Detail

2-1/2" BRASS CAP ON 1-1/2" IRON POST
& STONE ON EAST SIDE OF IRON POST

Sketch



Monument Set (Procedures and Description)

NOTHING SET

New Accessories

SET ALUMINUM CHANNEL MARKER POST WITH BLM LAND SURVEY MARKER SIGN NEAR CORNER

Location & Comments

BEARINGS ARE BASED ON
1973 BLM SURVEY

Compass Declination NOT USED

Firm/Agency: WOBBE & ASSOC. INC

Address: P.O. BOX 3093

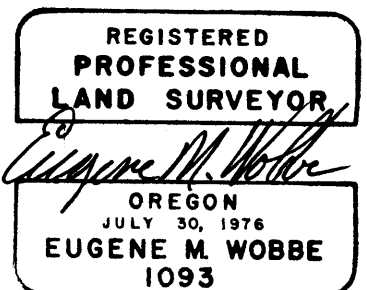
FLORENCE, OREGON

Party Chief: SEAN LANGE

Notes: _____

Witness: MATTHEW TERNYIK

Surveyor's Seal



C.S. File 65/95-45