

OREGON CORNER RESTORATION FORM

SECTION 8 TOWNSHIP 23 S. RANGE 6 W
 COUNTY DOUGLAS DATE 2/21/2017 TRACT J23-6-8
 POINT IDENTIFIER 240500

CORNER DESIGNATION:

T 23 S R 6 W
 S8
 1/4 —○—
 S17

_____ CONDITION REPORT ONLY
 _____ NOT FOUND
 _____ X RENEWED
 _____ UNRECORDED
 _____ SURVEYED IN
 _____ REFERENCED OUT

FILED
 Date: 7-17-2017 By: JC
 This survey consists of:
 Map: _____
 Narrative: CS
 Corner Rpt: 65/95-42

PREVIOUS RENEWALS/SURVEYS, ETC:

BLM FIELD NOTES PAGES 12711-12, HAINES 1957 MAP RM 1-17

**DOUGLAS COUNTY
 SURVEYOR**

ACCESSORIES FOUND: (CONDITION AND SOURCE)

WE DID NOT LOCATE ANY 1957 USBLM RECORD BEARING TREES

HAINES T-IRON BEARS S71°32'39"W 5.07 FT.

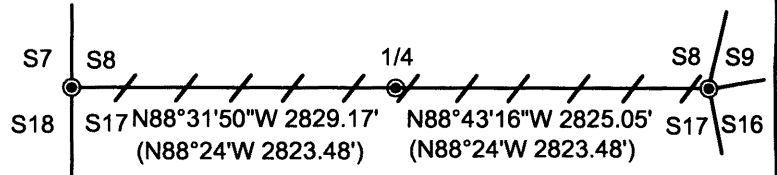
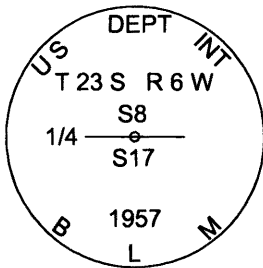
ROTTEN STUMP BEARS N81°4'E 7.6 FEET TO BLM MONUMENT (THIS IS ALSO A HAINES BT TO HIS T-IRON N33°E 10.8 FT RECORD N35°E 10.6 FT.)

33" FIR BEARS S23 1/2°E 15.4 FT. (BT TAG CALLS N27°W15.0 FT.) THIS IS ALSO A HAINES BT TO HIS T-IRON S41 1/4°E 16.6 FT. RECORD S43°E 17.0 FT.)

14" FIR OF UNKNOWN ORIGIN BEARS N86 1/2°E 21.5 FT. BT TAG CALLS S87°W 21.3 FT. HEALED FACE

MONUMENT DETAIL:

**SKETCH:
 (NOT TO SCALE)**



LEGEND:

- LINES BLAZED, PAINTED AND TAGGED
- FND 1957 BLM BRASS CAP
- 1960 BLM PLAT OF T23S R6W

MONUMENT:

FOUND 1957 BUREAU OF LAND MANAGEMENT BRASS CAP

NEW ACCESSORIES:

LOCATION & COMMENTS:

WE RAN A RANDOM TRANSIT TRAVERSE BEGINNING AT THE SOUTHEAST CORNER OF SECTION 8, TO THE S1/4 CORNER, THEN CONTINUED TO THE SOUTHWEST CORNER OF SECTION 8. WE MARKED PROPERTY BOUNDARIES ON TRUE LINE BETWEEN CORNERS. WE FIND THE RECORD 1957 BLM BRASS CAPS AND HAINES T-IRON'S AT ALL CORNERS. WE CLOSED OUR COVENTIONAL SURVEY WITH GPS.

BEARING BASIS: GPS OBSERVATIONS TO CLOSE

SURVEY
 FIRM/AGENCY: LONE ROCK TIMBER MANAGEMENT CO.
 ADDRESS: P.O. BOX 1127
ROSEBURG, OR 97470
 PARTY CHIEF: KEN W. HOFFINE
 NOTES: GARY ANGIOLET
 WITNESS: GARY ANGIOLET

REGISTERED
**PROFESSIONAL
 LAND SURVEYOR**

Ken W Hoffine
 OREGON
 JULY 16, 1987
KEN W. HOFFINE
 PLS 2291

C.S. FILE 65/95-42

EXPIRES 6-30-19