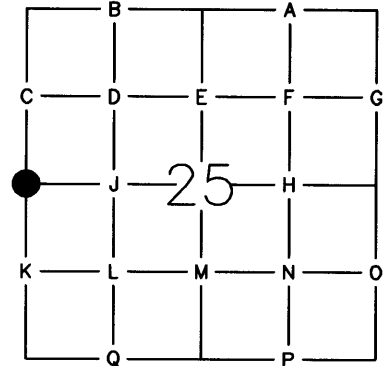


PUBLIC LAND CORNER

INDEX NO. _____

WEYERHAEUSER COMPANY
WILLAMETTE REGION



TOWNSHIP 23S RANGE 4W
 SECTION 25 CORNER WEST 1/4 CORNER
 COUNTY DOUGLAS OREGON

ORIGINAL CORNER DATED: 1884 BY: WILLIAM WRIGHT - GLO
 CORNER: 4 FOOT POST AND MARKED STONE
 ACCESSORIES: 50" FIR, N 37° E, 12 LKS.
12" YEW, S 37° W, 15 LKS.

REESTABLISHMENT NOTES DATED: UNKNOWN BY: WILFORD HAINES-CS FILE 54/16-23G
 EVIDENCE RECOVERED: 50" FIR STUB, N 37° E, 12 LKS.-NO SCRIBE VISIBLE
12" YEW STUB, S 37° W, 15 LKS. WITH SCRIBE / CORNER STONE IN PLACE
 CORNER SET: NOTHING NOTED

ACCESSORIES ESTABLISHED: 12" CEDAR, S 60° E, 24.0 FEET
12" FIR, N 59° W, 57.2 FEET

REESTABLISHMENT NOTES DATED: 1963 BY: WEYERHAEUSER COMPANY-CS FILE 53/108
 EVIDENCE RECOVERED: 1884 STONE IN PLACE
50" FIR STUMP, N 37° E, 7.9 FEET (HIGH STUMP AND FACE BURNED OUT)
12" YEW STUMP (BURNED), S 37° W, 9.9 FEET / HAINES "T" IRON ALONGSIDE STONE
 CORNER SET: NOTHING NOTED

ACCESSORIES ESTABLISHED: _____
16" CEDAR, S 57° E, 22.7 FEET TO "W" NAIL IN FACE (HAINES BT)
16" FIR, N 60° W, 56.4 FEET TO "W" NAIL IN FACE (HAINES BT)

REESTABLISHMENT NOTES DATED: 1990 BY: KEN HOFFINE - M 109-56
 EVIDENCE RECOVERED: HAINES "T" IRON ALONGSIDE 12"X18" STONE
50" FIR ROTTEN STUMP, N 44° E, 11.0 FEET (4' HIGH STUMP AND NO VISIBLE SCRIBE)
12" YEW SNAG (10' HIGH AND BURNED), S 37° W, 10 FEET (NO VISIBLE SCRIBE)
20" CEDAR STUMP, S 57° E, 22.7 FEET-WELL HEALED SCAR WITH WEYCO TAG AND "W" NAIL
16" FIR STUMP, N 60° W, 56.0 FEET (CUT LOW AND NO EVIDENCE REMAINING)

CORNER SET: NOTHING
 ACCESSORIES ESTABLISHED: 10" HEMLOCK, S 27° W, 11.3 FEET

REMONUMENTATION

DATE: 2/2008 BY: DANIEL W. BAKER TITLE: PLS 1978 FIRM: BAKER & ASSOC.
 EVIDENCE RECOVERED: HAINES "T" IRON - 8" ABOVE GROUND
50" ROTTEN FIR STUMP, N 44° E, 11.6 FEET TO CENTER
26" CEDAR STUMP, S 59° E, 22.9 FEET / 20" HEMLOCK, S 28° W, 11.2 FEET
12" YEW STUMP, S 37° W, 10.0 FEET

CORNER SET: NONE
 ACCESSORIES ESTABLISHED: 7" FIR, N 6° E, 16.8 FEET TO CENTER - SCRIBED "X BT"
6" FIR, S 42° E, 14.6 FEET TO CENTER - SCRIBED "X BT"
9" ALDER, N 64° W, 51.3 FEET TO CENTER - BARK SCRIBED "1/4S26 BT"

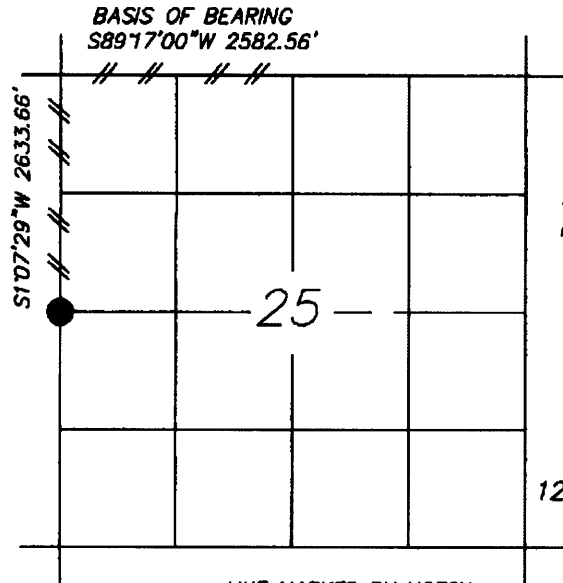
OTHER INFORMATION: SET 6 FOOT METAL POST ALONGSIDE CORNER

600240

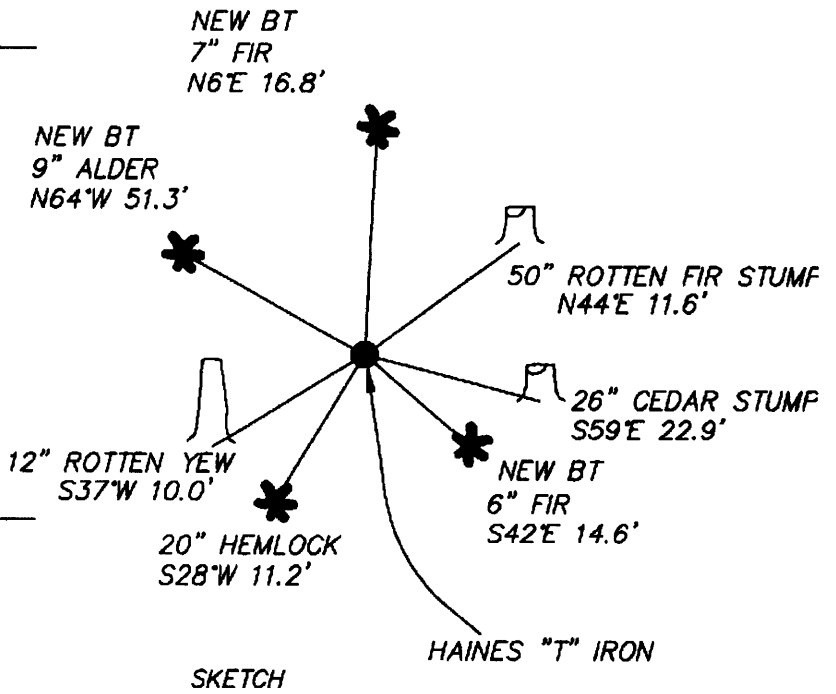
Pg 1

C.S. File No 45195-18

SECTION 25 TOWNSHIP T23S RANGE 4W

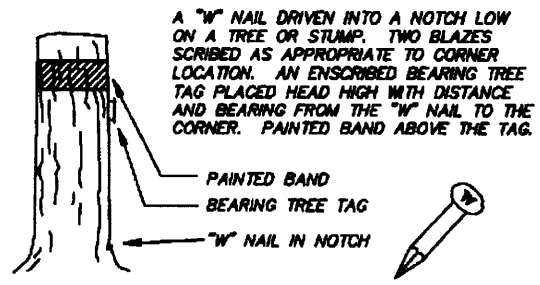


- LINE MARKED BY NOTCH CUT IN BLAZE
- KNOWN CORNER
- REFERENCED CORNER BY WEYERHAEUSER METHOD



THE NORTH 1/2 OF THE WEST LINE OF SECTION 25 E WAS TRAVERSED, BLAZED AND PAINTED BY BAKER AND ASSOCIATES IN FEBRUARY, 2008.
THE WEST 1/2 OF THE NORTHLINE OF SECTION 25 WAS TRAVERSED, BLAZED AND PAINTED BY BAKER AND ASSOCIATES ALSO IN FEBRUARY, 2008.
THE BASIS OF BEARING FOR THIS SURVEY WAS THE WEST 1/2 OF THE NORTH LINE OF SECTION 25 PER THE 1856 GLO SURVEY.

WEYERHAEUSER COMPANY
 CORNER REFERENCE METHOD



IDENTIFIED ON PHOTO: _____

INFORMATION ON CORNER AS NOW SET
 GROUND COVER: SALAL AND SMALL FIR (CLEAR CUT TO SOUTH)
 SLOPE FACE (BEARING) N65E (-) -18 %

FROM CORNER	NORTH	<u>+2%</u>
	SOUTH	<u>-6%</u>
	EAST	<u>+17%</u>
	WEST	<u>-15%</u>

BY: DANIEL W. BAKER DATE: 2/2008
 FIRM: BAKER & ASSOCIATES
 ASSISTED BY: DAN HUNYADA AND SEAN BOWEN
 COPIES TO: DOUGLAS COUNTY

ORS 672-025

REGISTERED PROFESSIONAL LAND SURVEYOR

Daniel W. Baker

OREGON
 JULY 16, 1982
 DANIEL W. BAKER
 1978

EXPIRES 12/31/17