

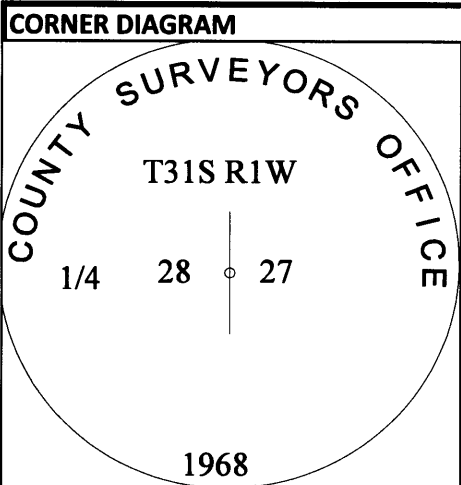
USDA-FOREST SERVICE

Index

CORNER RECORD (SEARCH)

FILED MAR 29 2017

File No. T-13 PROJ. NO. ELK CORNER 1/4  
 TOWNS. 31 S RANGE 1 W R.D. TILLER COUNTY DOUGLAS GCDB# 400240  
 MERID. W.M. FOREST UMPQUA STATE OREGON



**DESCRIBE CORNER MONUMENT FOUND**  
 FOUND 26" FIR CORNER TREE WITH HEALED DOUBLE BLAZES ON EAST AND WEST SIDE, ALSO A 2-1/2" BRASS CAP ON 1-1/4" IRON PIPE ON SOUTH SIDE IN SMALL RING OF STONE, SLANTED SOUTH BY TREE GROWTH.

**DESCRIBE BEARING TREES OR OTHER OFFICIAL ACCESSORIES FOUND**

DIA	TYPE	BEARS	DIST	FACE/MARKINGS
2.5"	BRASS CAP	SOUTH	2 FT	REFERENCE MONUMENT
16"	FIR SNAG	(S5°E)	(36.5 FT)	8 FT TALL SNAG, HEALED DOUBLE BLAZE
13"	FIR STOB	S17°30'W	29.5 FT	ROTTEN STOB, HEALED SINGLE BLAZE

Obj. Ident. \_\_\_\_\_  
 Ident. By \_\_\_\_\_

Signature \_\_\_\_\_  
**PLANE COORDINATE POSITION DATA**  
 State \_\_\_\_\_ Zone \_\_\_\_\_  
 North \_\_\_\_\_  
 West \_\_\_\_\_  
 Estab. By \_\_\_\_\_

**DESCRIBE CORNER LOCATION RELATIVE TO NEAR-BY FEATURES, ALSO HOW TO REACH CORNER**  
 CORNER FALLS AT THE BASE OF A SLOPE, ON A HIGH BENCH ABOVE CREEK TO THE SOUTH, FALLEN DOWN FENCES COME INTO CORNER FROM SOUTH AND WEST. TAKE FS ROAD 370 TO PULL OUT JUST NORTH OF CORNER, HIKE SOUTH DOWN SOUTH SLOPE TO CORNER.  
 MAINTAINED PROPERTY LINE .5 MILES SOUTH AND WEST

Signature \_\_\_\_\_ Title \_\_\_\_\_ Division \_\_\_\_\_ Headquarters \_\_\_\_\_

**CORNER RECORD (PERPETUATION)**

**MONUMENT : DESCRIBE NEW MONUMENT SET, OR WORK DONE TO PRESERVE EXISTING MONUMENT**  
 BRUSH CLEARED AROUND MONUMENT AND TO BT'S  
 "LAND LINE" FLAGGING TIED ON MONUMENT AND GUARD POSTS

REGISTERED PROFESSIONAL LAND SURVEYOR  
*John Ransom*  
 OREGON  
 JULY 21, 1992  
 JOHN C. RANSOM  
 2561

**ACCESSORIES : DESCRIBE NEW BT'S WITNESS OBJECTS ETC. ESTABLISHED, OR WORK DONE TO PRESERVE EXISTING EVIDENCE**  
 MARKED NEW ACCESSORIES:  
 A 21" CEDAR BEARS, N61°W - 66.4 FT, MARKED "1/4S28" "BT" ON A DOUBLE BLAZE  
 A 13" FIR BEARS, S78°30'E - 35.2 FT, MARKED "1/4S27" "BT" ON A DOUBLE BLAZE  
 A 7" FIR BEARS, S29°15'E - 13.1 FT, MARKED 1/4S27" "BT" ON A DOUBLE BLAZE  
 A 6" FIR BEARS, S16°15'W - 24.2 FT, MARKED "X" "BT" ON A DOUBLE BLAZE

DONE BY: Jonathan Drew TITLE LSIT DATE 7/28/2014 PLS NO./AGENCY/STATE \_\_\_\_\_  
 Certified Cor. Record Prepared ? \_\_\_\_\_ Filed At: \_\_\_\_\_ DATE \_\_\_\_\_

**REMARKS**  
 MEASUREMENTS TO ACCESSORIES MADE WITH A LEICA 1103+ TOTAL STATION WITH REFLECTORLESS EDM TO ALUMINUM NAIL SET AT SIDE CENTER, BASIS OF BEARING FROM M50-33, BEING N89°24'44"W AS SET USING A PROPERTY LINE POST FOUND TO THE WEST 250 FT+/- . ALL NEW ACCESSORIES INCLUDE 3/4" BRASS WASHER STAMPED "LS2561" NAILED IN LOWER FACE BETWEEN "B" & "T"

Index File No T-13 T. 31 S R. 1 W M. W.M. Proj No. ELK Cor. 1/4

C.S. File No 65195-16