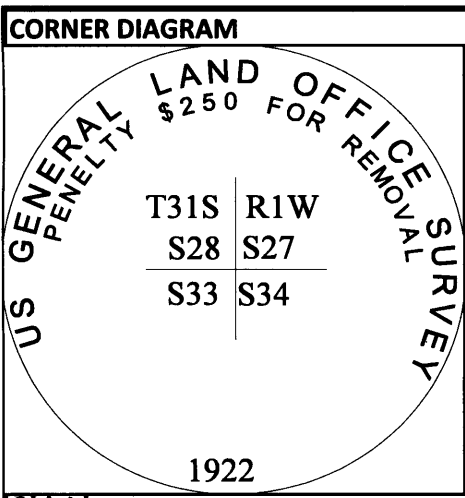


USDA-FOREST SERVICE

Index

CORNER RECORD (SEARCH)

File No. V-13 PROJ. NO. ELK CORNER SEC
 TOWNS. 31 S RANGE 1 W R.D. TILLER COUNTY DOUGLAS GCDB# 400200
 MERID. WM FOREST UMPQUA STATE OREGON



DESCRIBE CORNER MONUMENT FOUND
 FOUND 2-1/2" BRASS CAP ON 2" IRON PIPE, PROJECTING 13" ABOVE THE GROUND, SLANTED SLIGHTLY WEST.

DESCRIBE BEARING TREES OR OTHER OFFICIAL ACCESSORIES FOUND

DIA	TYPE	BEARS	DIST	FACE/MARKINGS
21"	FIR SNAG	N30°E	41.6 FT	HEALED DOUBLE BLAZE
INDT	ROOT HOLE	N81°15'E	35.8 FT	36" HIGH STUMP DOWNED AND DRAGGED
21"	MAPLE	S30°45'E	31.1 FT	HEALED SINGLE BLAZE
30"	FIR	N69°45'W	17.1 FT	HEALED DOUBLE BLAZE
INDT	FIR STUMP	N44°15W	20.0 FT	ROTTEN STUMP, HOLLOW SHELL, LOG OVER FACE

Obj. Ident. _____
 Ident. By _____
 Signature _____

PLANE COORDINATE POSITION DATA
 State _____ Zone _____
 North _____
 West _____
 Estab. By _____

DESCRIBE CORNER LOCATION RELATIVE TO NEAR-BY FEATURES, ALSO HOW TO REACH CORNER
 CORNER FALLS ABOUT 75 FEET NORTH OF PRIVATE LOGGING ROAD IN SECTION 34, FOLLOW FS ROAD 370 TO GATE, FOLLOW PRIVATE ROAD 2000 FT+/- WEST TO OVERGROWN SPUR ON NORTH, FOLLOW OLD SPUR TO CORNER ON WEST SIDE.

Signature _____ Title _____ Division _____ Headquarters _____

CORNER RECORD (PERPETUATION)

MONUMENT : DESCRIBE NEW MONUMENT SET, OR WORK DONE TO PRESERVE EXISTING MONUMENT
 BRUSH CLEARED AROUND MONUMENT AND TO BT'S
 "LAND LINE" FLAGGING TIED ON MONUMENT AND GUARD POSTS

REGISTERED PROFESSIONAL LAND SURVEYOR
John Ransom
 OREGON
 JULY 21, 1992
 JOHN C. RANSOM
 2561

ACCESSORIES : DESCRIBE NEW BT's WITNESS OBJECTS ETC. ESTABLISHED, OR WORK DONE TO PRESERVE EXISTING EVIDENCE
 MARKED NEW ACCESSORIES:
 A 12" FIR BEARS, S45°45'W - 10.3 FT, MARKED "T31SR1WS33" "BT" ON A DOUBLE BLAZE
 A 11" FIR BEARS, N53°45'E - 61.8 FT, MARKED "T31SR1WS27" "BT" ON A DOUBLE BLAZE

DONE BY: Jonathan Drew TITLE LSIT DATE 7/28/2014 PLS NO./AGENCY/STATE JOHN RANSOM, PLS2561
 Certified Cor. Record Prepared ? _____ Filed At: _____ DATE _____

REMARKS
 PROPERTY LINE MAINTINED NORTH .5 MILES
 BASIS OF BEARING BEING PLATTED BEARING(N0°06'45"E) USING A PROPERTY LINE POST FOUND TO THE NORTH.
 MEASURMENTS BY LEICA 1103+ TOTAL STATION WITH RED LASER TO ALUMINUM NAIL SET AT SIDE CENTER.
 NEW ACCESSORIES INCLUDE A 3/4" BRASS WASHER STAMPED "LS2561" SET FLUSH IN LOWER FACE BETWEEN "B" & "T"

Index File No V-13 T. 31 S R. 1 W M. WM Proj No. ELK Cor. SEC