

FILED

Date: 3-29-2017 By: JC

This survey consists of:

Map: \_\_\_\_\_

Narrative: \_\_\_\_\_

Corner Rpt: CS 65/95-12

### OREGON CORNER RESTORATION FORM

Section 2 Township 31S Range 3W

County Douglas Date 1-17-2016

DOUGLAS COUNTY  
SURVEYOR

#### Corner Designation

S2  
S11  
1/4 Corner

- Condition Report Only
- Not Found
- Renewed
- Unrecorded
- Surveyed In
- Referenced out

#### Previous Renewals / Surveys, etc.

Original by Bushey in 1893; renewed by Markham in 1959 and again by the Douglas County survey crew in 1965.

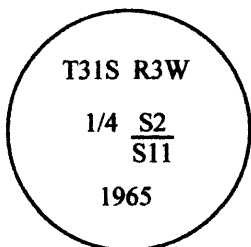
#### Monument (s) & Accessories Found: (Condition & Source)

Found Brass Cap set by DCSO in 1965.

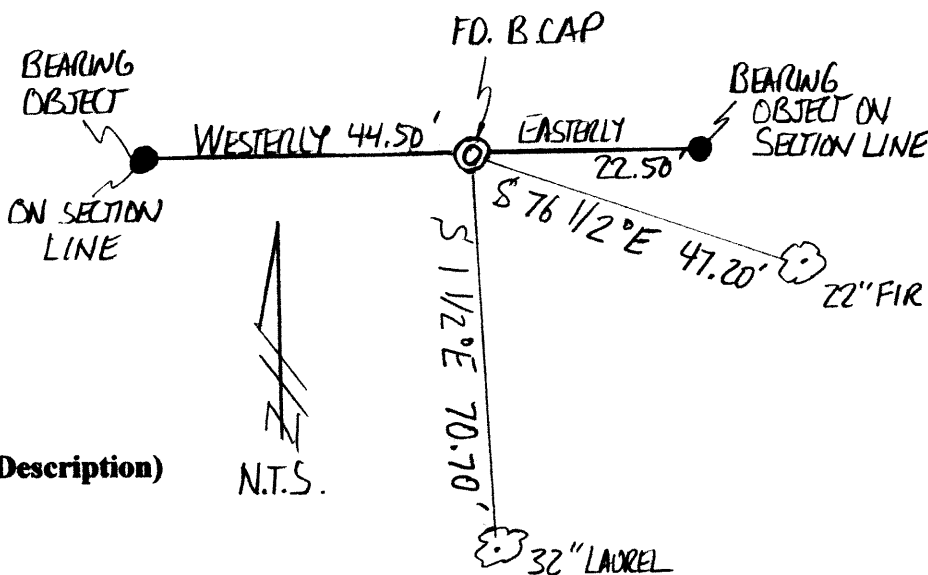
Found 22" Fir bears S76 1/2°E 47.20 feet (47.7 feet). (scribed by Markham in 1959)

Found 32" Laurel bears S1 1/2°E 70.70 feet (74.5 feet). (scribed by Markham in 1959)

#### Monument Detail



#### Sketch



#### Monument Set (Procedures & Description)

N/A

#### New Accessories

Set 5/8" iron rod with plastic cap marked "Lang Surveying" as a bearing object; said point bears easterly (on section line) 22.40 feet from the brass cap. Steel post with tag set alongside  
Set 5/8" iron rod with plastic cap marked "Lang Surveying" as a bearing object; said point bears westerly (on section line) 44.50 feet from the brass cap. Steel post with tag set alongside

BT tags as needed; steel post at the corner.

#### Location & Comments:

Corner lies on open North slope, 100 feet easterly of creek.

Compass Declination N/A

#### Firm/Agency

Gregory D. Lang, Surveyor  
7550 Willis Creek Rd.  
Winston, Or 97496

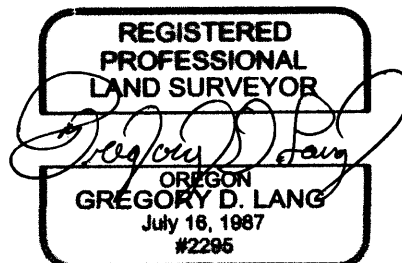
#### Party Chief and Notes

Gregory Lang

#### Witness

Trevor Lang

#### Surveyor's Seal



EXPIRES: 12-31-2016

C.S. File No 65/95-12