

FILED

Date: 3/29/2017 By: SC

This survey consists of:

Map: \_\_\_\_\_

Narrative: \_\_\_\_\_

Corner Rpt: C565/95-10

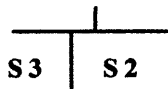
# OREGON CORNER RESTORATION FORM

Section 2 Township 31S Range 3W

County Douglas Date 1-14-2016

**DOUGLAS COUNTY SURVEYOR**

### Corner Designation



Closing Corner for S2 & S3 (north boundary)

- Condition Report Only
- Not Found
- Renewed
- Unrecorded
- Surveyed In
- Referenced out

### Previous Renewals / Surveys, etc.

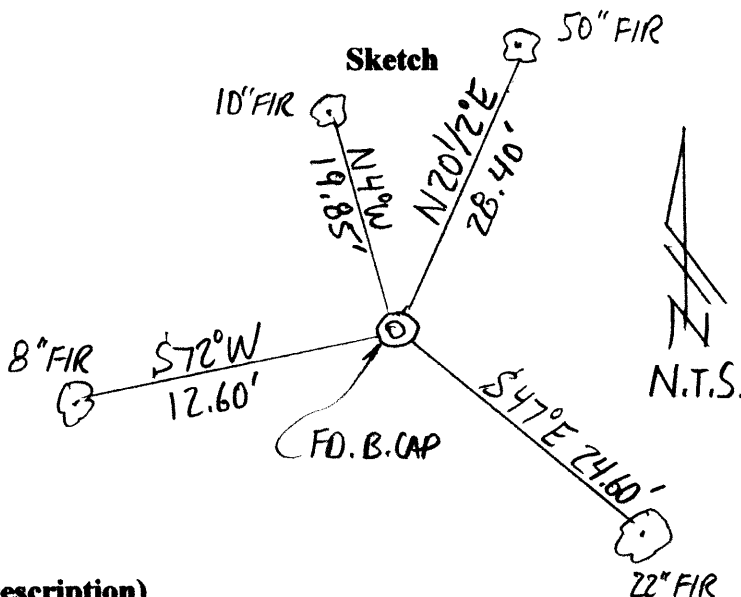
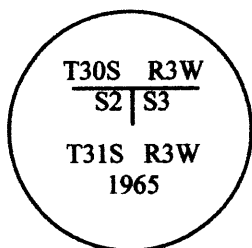
Original GLO by William Bushey in 1893; renewed by John Markham in 1959 and then again by Douglas County crew in 1965; accepted & used by BLM in 1983.

### Monument (s) & Accessories Found: (Condition & Source)

Found a Douglas County Brass cap set in 1965.

- Existing 22" Fir bears S47°E 24.60 ft. (scribed by Markham 1959)
  - Existing 50" Fir bears N20 1/2°E 28.40 ft. (original - scribed by Bushey in 1893)
  - Existing 10" Fir bears N4°W 19.85 ft. (scribed by Markham 1959)
  - Existing 8" Fir bears S72°W 12.60 ft. (scribed by Markham 1959)
- (Laurels from the 1965 renewal were also found, but not field located)

### Monument Detail



### Monument Set (Procedures & Description)

N/A

### New Accessories

BT tags as needed; steel post at corner.

### Location & Comments:

Corner lies on the westerly side of a ridge top and about 600 feet northerly of an existing landing.

Compass Declination N/A

### Firm/Agency

Gregory D. Lang, Surveyor  
7550 Willis Creek Rd.  
Winston, Or 97496

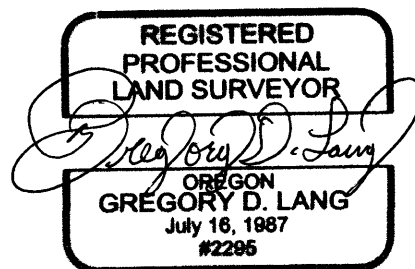
### Party Chief and Notes

Gregory Lang

### Witness

Trevor Lang

### Surveyor's Seal



EXPIRES: 12-31-2016

C.S. File No 6595-10