

FILED

Date: 3-29-2017 By: JC

This survey consists of:

Map: _____

Narrative: _____

Corner Ref: CS 65/95-9

OREGON CORNER RESTORATION FORM

Section 34 Township 29 South Range 07 West

County Douglas Date 1-13-2016

DOUGLAS COUNTY SURVEYOR

Corner Designation

CN 1/16TH
SECTION 34
T29S, R7W, W.M.

- Condition Report Only
- Not Found
- Renewed
- Unrecorded
- Surveyed In
- Referenced out

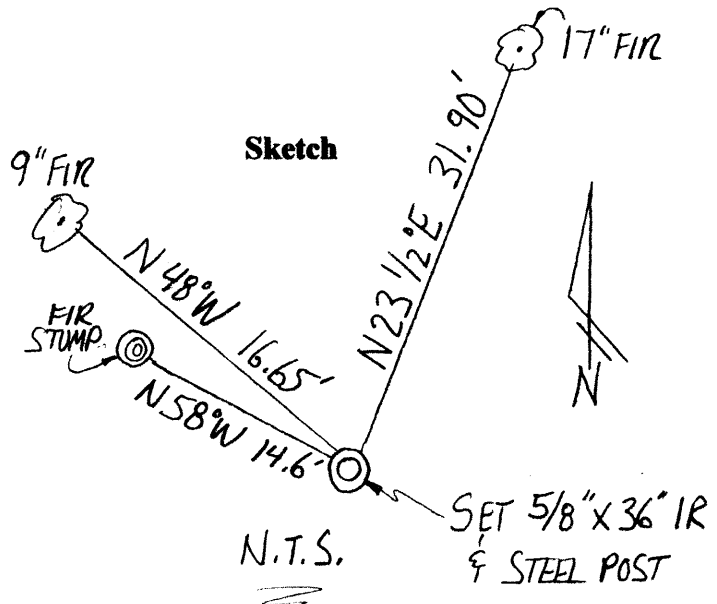
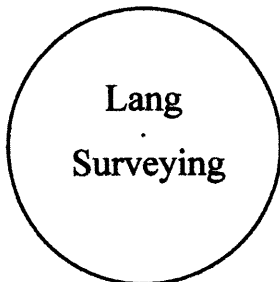
Previous Renewals / Surveys, etc.

This Corner was originally set by Howard Johnstone in 1980 (see survey M84-80).

Monument (s) & Accessories Found: (Condition & Source)

At the corner point, we found the original (badly bent) 5/8" x 40" iron rod in the bottom of a creek. Position was determinable. Also found a fir stump which bears N58°W 14.6 feet. No trace of SW BT.

Monument Detail



Monument Set (Procedures & Description)

At the corner point, we set a 5/8" x 36" iron rod with plastic cap marked "Lang Surveying". We also straightened the original 5/8" x 40" iron rod and reset it alongside the new one.

New Accessories

9" fir bears N48°W 16.65', scribed "CN 1/16 S34 BT"
17" fir bears N23 1/2°E 31.90' scribed "CN 1/16 S34 BT"

Location & Comments:

Corner lies in a creek bottom about 200 feet southeast of a drivable road.

Compass Declination N/A

Firm/Agency

Gregory D. Lang, Surveyor
7550 Willis Creek Rd.
Winston, Or 97496

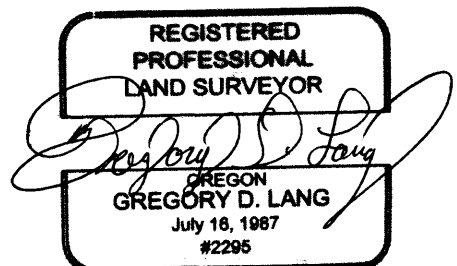
Party Chief and Notes

Gregory Lang

Witness

Trevor Lang

Surveyor's Seal



EXPIRES: 12-31-2016

C.S. File No 65/95-9