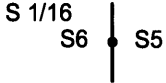


OREGON CORNER RESTORATION FORM

Section 6 Township 23 S Range 5W
 County Douglas Tract J230506-Beckley GCDB Number: 200620
 Date Nov. 2016

Corner Designation



- Condition Report Only
- Not Found
- Renewed
- Unrecorded
- Surveyed In
- Referenced Out

Previous Renewals/Surveys, etc.

1984 BLM Dependant Resurvey 6024 Filed in DCSO Page 17673 And 1960 Haines Survey M19-6 Filed in DCSO.

Accessories Found: (Condition and Source)

- Rotten Fir Stub Bears S48°E 8.35 Ft. (Record S52°E 8.58 Ft.) With Aluminum Cap That Has Fallen Off.
- Haines T-Iron Rod Bears N25°42'46"E 5.61 Ft. (Record N25°30'E 5.68 Ft.)
- Hained BT: 36" Haines Rotten Fir Stump Bears N8°E 31.18 Ft From T-Iron. (Record N6°E 31.0 Ft) With Tag.

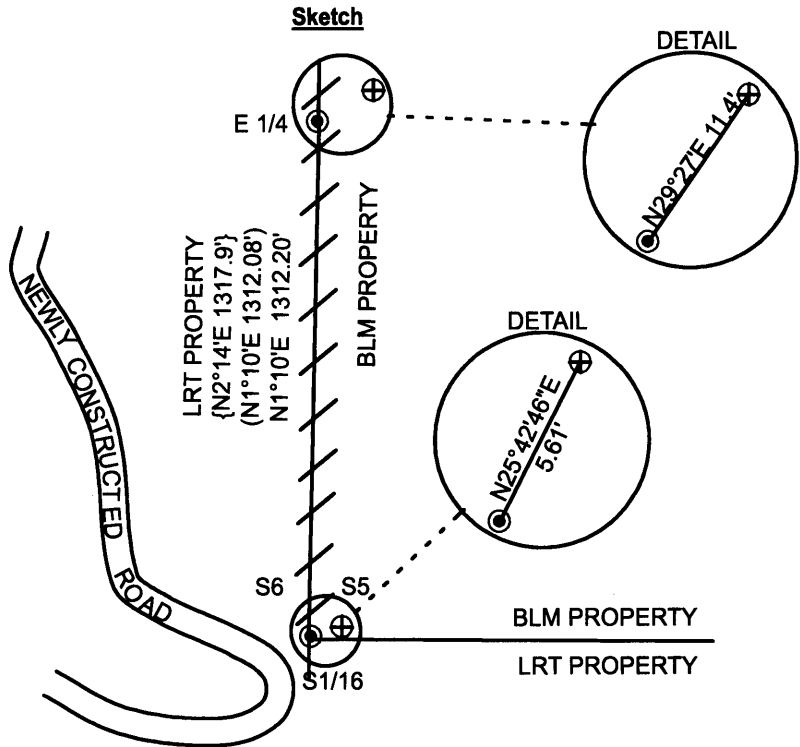
Monument Detail



Legend:

- Found 1982 BLM Caps Per BLM Plat 6024
- Found 1960 Haines T-Iron Per M19-6
- BLM Plat 6024 Page 17673 Filed In Douglas County Surveyors Office
- Haines 1960 M19-6 Map Filed in Douglas County Surveyors Office
- Line Flagged, Blazed, Painted, And Tagged

Sketch



Monument Found

Found 1982 BLM ACAP Per BLM Field Notes

New Accessories

- 12" Douglas Fir Bears N7 1/4°E 51.28 Ft. We Scribed S 1/16 S5 BT And Tagged Tree.
- 12" Douglas Fir Bears S77°W 87.67 Ft. We Scribed S 1/16 S6 BT And Tagged Tree.

FILED
 Date: 1-5-2017 By: X
 This survey consists of:
 Map:
 Narrative:
 Order Ref: CS65/95-1

Location & Comments

Beginning at the S 1/16 th corner between sections 5 and 6 we
ran a closed random traverse between the E 1/4 of section 6 and
the S 1/16. We then blazed, painted, and tagged property line
between the S1/16 and the E 1/4. The S 1/16 corner lies
approx. 0.6 Ft. above ground level and is approx. 50 feet North
of curve in newly constructed dirt road.

DOUGLAS COUNTY
 SURVEYOR

REGISTERED
**PROFESSIONAL
 LAND SURVEYOR**

 OREGON
 JULY 16, 1987
KEN W. HOFFINE
 PLS 2291
EXPIRES 6-30-17

Bearing Basis Assumed From BLM Plat 6024, SEC 5, 6, 7, 8 to 1/4 between SEC 5 and 6
Firm/Agency Lone Rock Timber Co.
Address P. O. Box 1127 Roseburg, Ore. 97470
Party Chief Ken W. Hoffine
Notes G. Angiolet and K. Nichols
Witness I. Roman

C.S. File No 65/95-1